

## FAST Polyclonal Antibody

<b>Catalog No :</b>	YT1678
<b>Reactivity :</b>	Human;Mouse;Rat
<b>Applications :</b>	WB;ELISA
<b>Target :</b>	FAST
<b>Gene Name :</b>	FASTK
<b>Protein Name :</b>	Fas-activated serine/threonine kinase
<b>Human Gene Id :</b>	10922
<b>Human Swiss Prot No :</b>	Q14296
<b>Mouse Swiss Prot No :</b>	Q9JIX9
<b>Immunogen :</b>	The antiserum was produced against synthesized peptide derived from human FAST. AA range:361-410
<b>Specificity :</b>	FAST Polyclonal Antibody detects endogenous levels of FAST protein.
<b>Formulation :</b>	Liquid in PBS containing 50% glycerol, 0.5% BSA and 0.02% sodium azide.
<b>Source :</b>	Polyclonal, Rabbit,IgG
<b>Dilution :</b>	WB 1:500 - 1:2000. ELISA: 1:20000. Not yet tested in other applications.
<b>Purification :</b>	The antibody was affinity-purified from rabbit antiserum by affinity-chromatography using epitope-specific immunogen.
<b>Concentration :</b>	1 mg/ml
<b>Storage Stability :</b>	-15°C to -25°C/1 year(Do not lower than -25°C)
<b>Observed Band :</b>	61kD

**Background :**

The protein encoded by this gene is a member of the serine/threonine protein kinase family. This kinase was shown to be activated rapidly during Fas-mediated apoptosis in Jurkat cells. In response to Fas receptor ligation, it phosphorylates TIA1, an apoptosis-promoting nuclear RNA-binding protein. The encoded protein is a strong inducer of lymphocyte apoptosis. Two transcript variants encoding different isoforms have been found for this gene. Other variants exist, but their full-length natures have not yet been determined. [provided by RefSeq, Jul 2008],

**Function :**

catalytic activity:ATP + [Fas-activated serine/threonine protein] = ADP + [Fas-activated serine/threonine phosphoprotein].,function:Fas-mediated apoptosis is characterized by FASTK-dephosphorylation and TIA-1-phosphorylation. Both are activated and FASTK-mediated TIA-1 activation play a key role in apoptosis.,PTM:Phosphorylated on serine/threonine.,similarity:Belongs to the FAST protein kinase family.,similarity:Contains 1 RAP domain.,subunit:Interacts with TIA-1.,tissue specificity:Expressed in heart, brain, placenta, lung, liver, skeletal muscle, kidney and pancreas.,

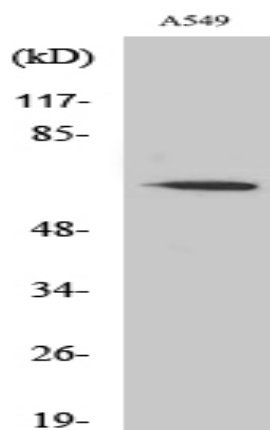
**Subcellular Location :**

[Isoform 4]: Mitochondrion matrix . Colocalizes with mitochondrial RNA granules.

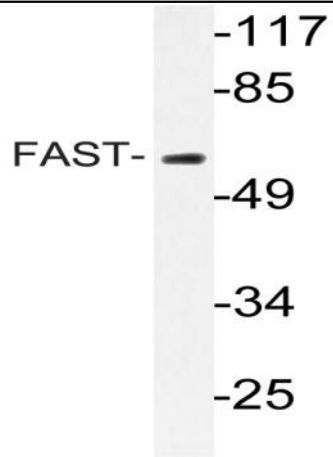
**Expression :**

Expressed in heart, brain, placenta, lung, liver, skeletal muscle, kidney and pancreas.

## Products Images



Western Blot analysis of various cells using FAST Polyclonal Antibody



Western blot analysis of lysate from A549 cells, using FAST antibody.