

## Galectin-8 Polyclonal Antibody

<b>Catalog No :</b>	YT1840
<b>Reactivity :</b>	Human;Mouse
<b>Applications :</b>	WB;IHC;IF;ELISA
<b>Target :</b>	Galectin-8
<b>Gene Name :</b>	LGALS8
<b>Protein Name :</b>	Galectin-8
<b>Human Gene Id :</b>	3964
<b>Human Swiss Prot No :</b>	O00214
<b>Mouse Gene Id :</b>	56048
<b>Mouse Swiss Prot No :</b>	Q9JL15
<b>Immunogen :</b>	The antiserum was produced against synthesized peptide derived from human LEG8. AA range:61-110
<b>Specificity :</b>	Galectin-8 Polyclonal Antibody detects endogenous levels of Galectin-8 protein.
<b>Formulation :</b>	Liquid in PBS containing 50% glycerol, 0.5% BSA and 0.02% sodium azide.
<b>Source :</b>	Polyclonal, Rabbit,IgG
<b>Dilution :</b>	WB 1:500 - 1:2000. IHC: 1:100-300 ELISA: 1:20000. IF 1:100-300 Not yet tested in other applications.
<b>Purification :</b>	The antibody was affinity-purified from rabbit antiserum by affinity-chromatography using epitope-specific immunogen.
<b>Concentration :</b>	1 mg/ml
<b>Storage Stability :</b>	-15°C to -25°C/1 year(Do not lower than -25°C)

**Observed Band :** 36kD

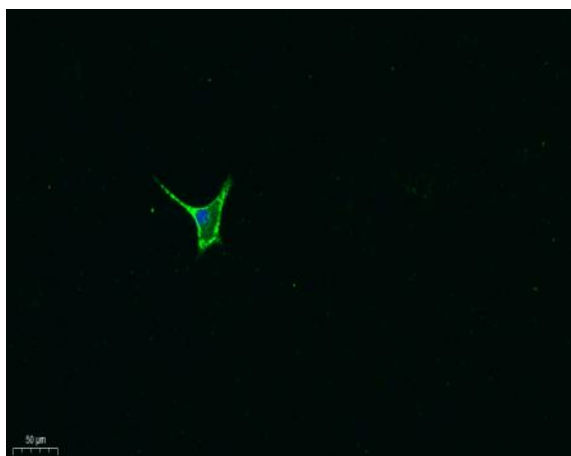
**Background :** This gene encodes a member of the galectin family. Galectins are beta-galactoside-binding animal lectins with conserved carbohydrate recognition domains. The galectins have been implicated in many essential functions including development, differentiation, cell-cell adhesion, cell-matrix interaction, growth regulation, apoptosis, and RNA splicing. This gene is widely expressed in tumoral tissues and seems to be involved in integrin-like cell interactions. Alternatively spliced transcript variants encoding different isoforms have been identified. [provided by RefSeq, Jul 2008],

**Function :** domain:Contains two homologous but distinct carbohydrate-binding domains.,online information:Galectin-8 C-terminal CRD,online information:Galectin-8 long isoform,similarity:Contains 2 galectin domains.,tissue specificity:Ubiquitous. Selective expression by prostate carcinomas versus normal prostate and benign prostatic hypertrophy.,

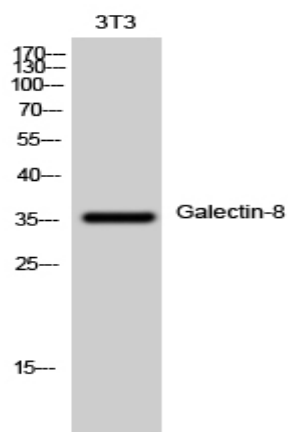
**Subcellular Location :** Cytoplasmic vesicle . Cytoplasm, cytosol .

**Expression :** Ubiquitous. Selective expression by prostate carcinomas versus normal prostate and benign prostatic hypertrophy.

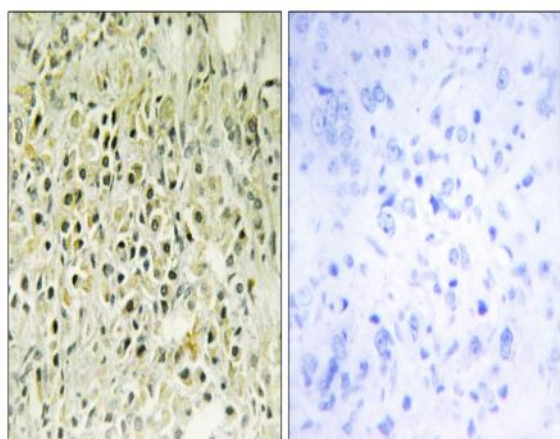
## Products Images



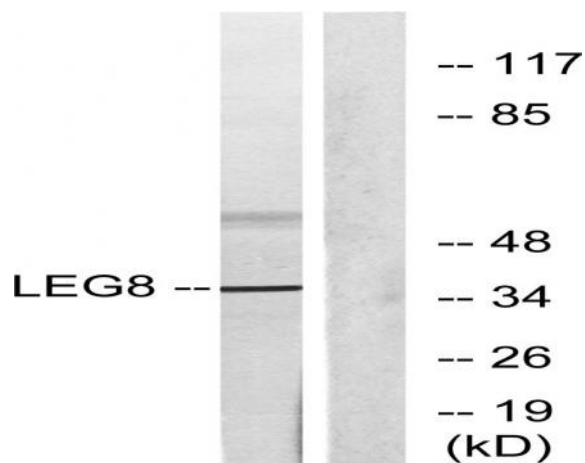
Immunofluorescence analysis of A549. 1,primary Antibody was diluted at 1:200(4°C overnight). 2, Goat Anti Rabbit IgG (H&L) - Alexa Fluor 488 Secondary antibody was diluted at 1:1000(room temperature, 50min).3, Picture B: DAPI(blue) 10min.



Western Blot analysis of 3T3 cells using Galectin-8 Polyclonal Antibody diluted at 1:1000



Immunohistochemistry analysis of paraffin-embedded human prostate carcinoma tissue, using LEG8 Antibody. The picture on the right is blocked with the synthesized peptide.



Western blot analysis of lysates from NIH/3T3 cells, using LEG8 Antibody. The lane on the right is blocked with the synthesized peptide.