

FASTKD2 Polyclonal Antibody

Catalog No :	YT1681
Reactivity :	Human;Rat;Mouse;
Applications :	WB;IHC;IF;ELISA
Target :	FASTKD2
Gene Name :	FASTKD2
Protein Name :	FAST kinase domain-containing protein 2
Human Gene Id :	22868
Human Swiss Prot No :	Q9NYY8
Mouse Swiss Prot No :	Q922E6
Immunogen :	The antiserum was produced against synthesized peptide derived from human FAKD2. AA range:171-220
Specificity :	FASTKD2 Polyclonal Antibody detects endogenous levels of FASTKD2 protein.
Formulation :	Liquid in PBS containing 50% glycerol, 0.5% BSA and 0.02% sodium azide.
Source :	Polyclonal, Rabbit,IgG
Dilution :	WB 1:500 - 1:2000. ELISA: 1:5000.. IF 1:50-200
Purification :	The antibody was affinity-purified from rabbit antiserum by affinity-chromatography using epitope-specific immunogen.
Concentration :	1 mg/ml
Storage Stability :	-15°C to -25°C/1 year(Do not lower than -25°C)
Observed Band :	81kD

Background :

This gene encodes a protein that is localized in the mitochondrial inner compartment and that may play a role in mitochondrial apoptosis. Nonsense mutations have been reported to result in cytochrome c oxidase deficiency. [provided by RefSeq, Oct 2008],

Function :

caution:It is uncertain whether Met-1 or Met-17 is the initiator.,similarity:Belongs to the FAST kinase family.,similarity:Contains 1 RAP domain.,

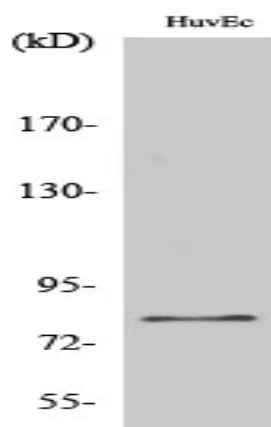
Subcellular Location :

Mitochondrion matrix, mitochondrion nucleoid . Mitochondrion matrix . Localizes to mitochondrial RNA granules found in close proximity to the mitochondrial nucleoids. .

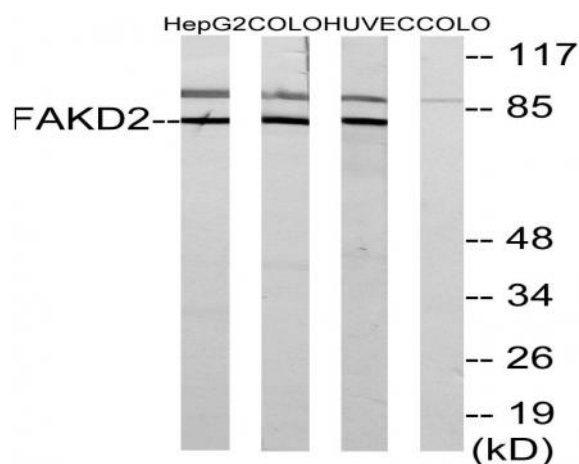
Expression :

Expression detected in spleen, thymus, testis, ovary, colon, heart, smooth muscle, kidney, brain, lung, liver and white adipose tissue with highest expression in heart, smooth muscle and thyroid.

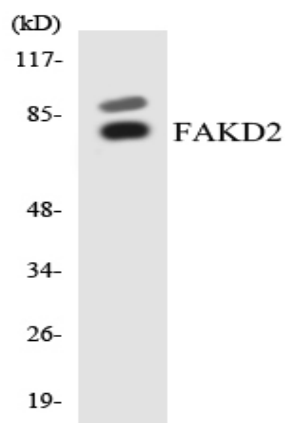
Products Images



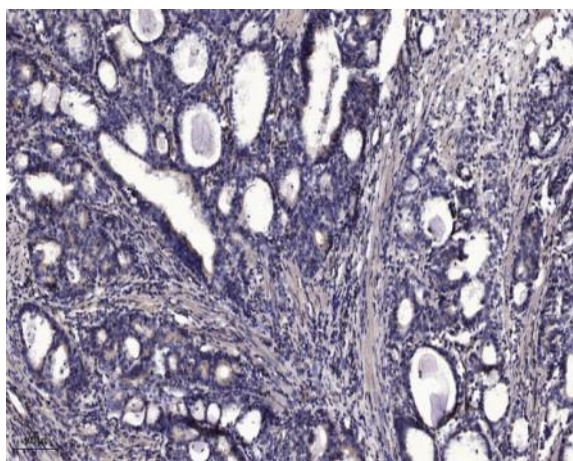
Western Blot analysis of various cells using FASTKD2 Polyclonal Antibody



Western blot analysis of lysates from HUVEC, HepG2, and COLO cells, using FAKD2 Antibody. The lane on the right is blocked with the synthesized peptide.



Western blot analysis of the lysates from COLO205 cells using FAKD2 antibody.



Immunohistochemical analysis of paraffin-embedded human Gastric adenocarcinoma. 1, Antibody was diluted at 1:200(4° overnight). 2, Tris-EDTA,pH9.0 was used for antigen retrieval. 3,Secondary antibody was diluted at 1:200(room temperature, 45min).