

## FDC-SP Polyclonal Antibody

<b>Catalog No :</b>	YT1687
<b>Reactivity :</b>	Human
<b>Applications :</b>	IHC;IF;ELISA
<b>Target :</b>	FDC-SP
<b>Gene Name :</b>	FDCSP
<b>Protein Name :</b>	Follicular dendritic cell secreted peptide
<b>Human Gene Id :</b>	260436
<b>Human Swiss Prot No :</b>	Q8NFU4
<b>Immunogen :</b>	Synthesized peptide derived from the C-terminal region of human FDC-SP. AA range: 26-75
<b>Specificity :</b>	FDC-SP Polyclonal Antibody detects endogenous levels of FDC-SP protein.
<b>Formulation :</b>	Liquid in PBS containing 50% glycerol, 0.5% BSA and 0.02% sodium azide.
<b>Source :</b>	Polyclonal, Rabbit,IgG
<b>Dilution :</b>	IHC 1:100 - 1:300. ELISA: 1:40000.. IF 1:50-200
<b>Purification :</b>	The antibody was affinity-purified from rabbit antiserum by affinity-chromatography using epitope-specific immunogen.
<b>Concentration :</b>	1 mg/ml
<b>Storage Stability :</b>	-15°C to -25°C/1 year(Do not lower than -25°C)
<b>Molecularweight :</b>	10kD
<b>Background :</b>	This gene encodes a small secreted protein that is expressed in follicular dendritic cells. This protein specifically binds to activated B cells, and functions as

a regulator of antibody responses. It is also thought to contribute to tumor metastases by promoting cancer cell migration and invasion. [provided by RefSeq, Dec 2011],

---

**Function :**

function:Can bind to the surface of B-lymphoma cells, but not T-lymphoma cells, consistent with a function as a secreted mediator acting upon B-cells.,tissue specificity:Abundantly expressed in tonsil, lymph node, and trachea; strong expression in prostate; lower expression in thyroid, stomach, and colon.,

---

**Subcellular Location :**

Secreted.

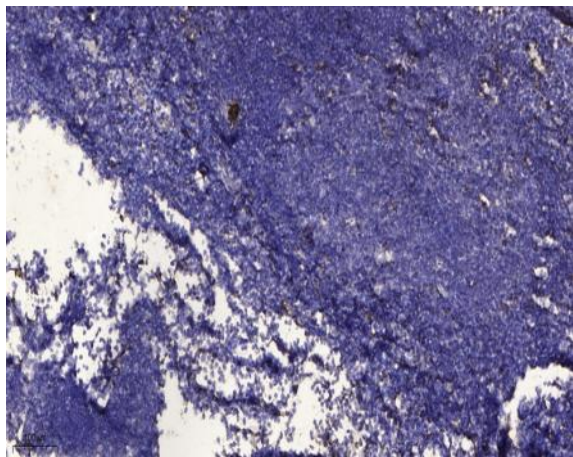
---

**Expression :**

Abundantly expressed in tonsil, lymph node, and trachea; strong expression in prostate; lower expression in thyroid, stomach, and colon.

---

## Products Images



Immunohistochemical analysis of paraffin-embedded human tonsil. 1, Antibody was diluted at 1:200(4° overnight). 2, Tris-EDTA,pH9.0 was used for antigen retrieval. 3,Secondary antibody was diluted at 1:200(room temperature, 30min).