

Fer Polyclonal Antibody

| | |
|------------------------------|---|
| Catalog No : | YT1690 |
| Reactivity : | Human;Mouse;Rat |
| Applications : | WB;IHC;IF;ELISA |
| Target : | FER |
| Fields : | >>Adherens junction |
| Gene Name : | FER |
| Protein Name : | Tyrosine-protein kinase Fer |
| Human Gene Id : | 2241 |
| Human Swiss Prot No : | P16591 |
| Mouse Gene Id : | 14158 |
| Mouse Swiss Prot No : | P70451 |
| Rat Swiss Prot No : | P09760 |
| Immunogen : | The antiserum was produced against synthesized peptide derived from human FER. AA range:766-815 |
| Specificity : | Fer Polyclonal Antibody detects endogenous levels of Fer protein. |
| Formulation : | Liquid in PBS containing 50% glycerol, 0.5% BSA and 0.02% sodium azide. |
| Source : | Polyclonal, Rabbit,IgG |
| Dilution : | WB 1:500 - 1:2000. IHC 1:100 - 1:300. IF 1:200 - 1:1000. ELISA: 1:5000. Not yet tested in other applications. |
| Purification : | The antibody was affinity-purified from rabbit antiserum by affinity-chromatography using epitope-specific immunogen. |

Concentration : 1 mg/ml

Storage Stability : -15°C to -25°C/1 year(Do not lower than -25°C)

Observed Band : 95kD

Cell Pathway : Adherens_Junction;

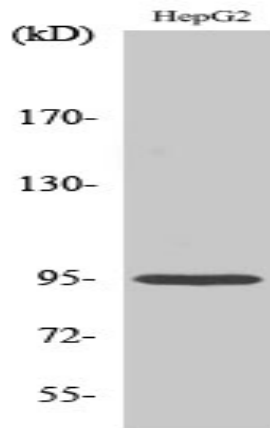
Background : The protein encoded by this gene is a member of the FPS/FES family of non-transmembrane receptor tyrosine kinases. It regulates cell-cell adhesion and mediates signaling from the cell surface to the cytoskeleton via growth factor receptors. Alternative splicing results in multiple transcript variants. A related pseudogene has been identified on chromosome X. [provided by RefSeq, Apr 2015],

Function : catalytic activity:ATP + a [protein]-L-tyrosine = ADP + a [protein]-L-tyrosine phosphate.,function:Tyrosine kinase of the non-receptor type. Probably performs an important function, perhaps in regulatory processes such as cell cycle control.,similarity:Belongs to the protein kinase superfamily. Tyr protein kinase family. Fes/fps subfamily.,similarity:Contains 1 FCH domain.,similarity:Contains 1 protein kinase domain.,similarity:Contains 1 SH2 domain.,subcellular location:Associated with the chromatin.,tissue specificity:Expressed in a variety of lymphoid cell lines.,

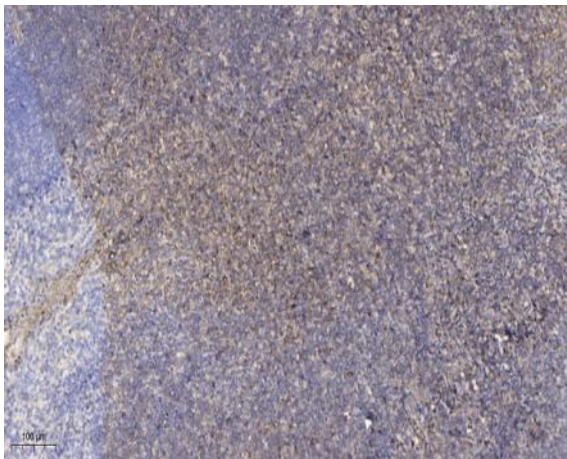
Subcellular Location : Cytoplasm. Cytoplasm, cytoskeleton. Cell membrane; Peripheral membrane protein; Cytoplasmic side. Cell projection. Cell junction. Membrane; Peripheral membrane protein; Cytoplasmic side. Nucleus. Cytoplasm, cell cortex. Associated with the chromatin. Detected on microtubules in polarized and motile vascular endothelial cells. Colocalizes with F-actin at the cell cortex. Colocalizes with PECAM1 and CTNND1 at nascent cell-cell contacts.

Expression : Isoform 1 is detected in normal colon and in fibroblasts (at protein level). Isoform 3 is detected in normal testis, in colon carcinoma-derived metastases in lung, liver and ovary, and in colon carcinoma and hepato carcinoma cell lines (at protein level). Isoform 3 is not detected in normal colon or in normal fibroblasts (at protein level). Widely expressed.

Products Images



Western Blot analysis of various cells using Fer Polyclonal Antibody



Immunohistochemical analysis of paraffin-embedded human tonsil. 1, Antibody was diluted at 1:200(4° overnight). 2, Tris-EDTA,pH9.0 was used for antigen retrieval. 3,Secondary antibody was diluted at 1:200(room temperature, 30min).