

## Fgl2 Polyclonal Antibody

|                              |   |
|------------------------------|---|
| <b>Catalog No :</b>          | YT1703  |
| <b>Reactivity :</b>          | Human;Mouse   |
| <b>Applications :</b>        | WB;ELISA  |
| <b>Target :</b>              | Fgl2  |
| <b>Gene Name :</b>           | FGL2  |
| <b>Protein Name :</b>        | Fibroleukin   |
| <b>Human Gene Id :</b>       | 10875   |
| <b>Human Swiss Prot No :</b> | Q14314  |
| <b>Mouse Swiss Prot No :</b> | P12804  |
| <b>Immunogen :</b>           | The antiserum was produced against synthesized peptide derived from human Fgl2. AA range:38-87                        |
| <b>Specificity :</b>         | Fgl2 Polyclonal Antibody detects endogenous levels of Fgl2 protein.   |
| <b>Formulation :</b>         | Liquid in PBS containing 50% glycerol, 0.5% BSA and 0.02% sodium azide.   |
| <b>Source :</b>              | Polyclonal, Rabbit,IgG  |
| <b>Dilution :</b>            | WB 1:500 - 1:2000. ELISA: 1:10000. Not yet tested in other applications.  |
| <b>Purification :</b>        | The antibody was affinity-purified from rabbit antiserum by affinity-chromatography using epitope-specific immunogen. |
| <b>Concentration :</b>       | 1 mg/ml   |
| <b>Storage Stability :</b>   | -15°C to -25°C/1 year(Do not lower than -25°C)  |
| <b>Observed Band :</b>       | 55kD  |

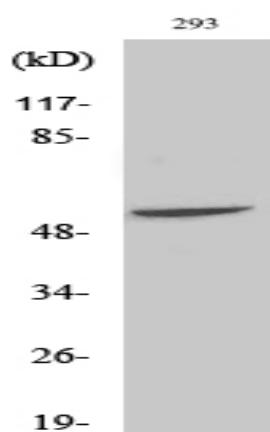
**Background :** fibrinogen like 2(FGL2) Homo sapiens The protein encoded by this gene is a secreted protein that is similar to the beta- and gamma-chains of fibrinogen. The carboxyl-terminus of the encoded protein consists of the fibrinogen-related domains (FRED). The encoded protein forms a tetrameric complex which is stabilized by interchain disulfide bonds. This protein may play a role in physiologic functions at mucosal sites. [provided by RefSeq, Jul 2008],

**Function :** function:May play a role in physiologic lymphocyte functions at mucosal sites.,similarity:Contains 1 fibrinogen C-terminal domain.,subunit:Homotetramer; disulfide-linked.,tissue specificity:Constitutively expressed in cytotoxic T-cells.,

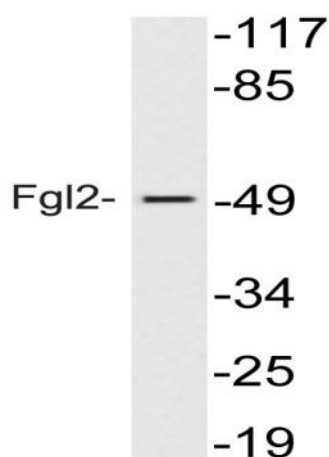
**Subcellular Location :** Secreted.

**Expression :** Constitutively expressed in cytotoxic T-cells.

## Products Images



Western Blot analysis of various cells using Fgl2 Polyclonal Antibody



Western blot analysis of lysate from 293 cells treated with insulin, using Fgl2 antibody.