

Fos B Polyclonal Antibody

Catalog No :	YT1738
Reactivity :	Human;Mouse;Monkey
Applications :	WB;IHC;IF;ELISA
Target :	Fos B
Fields :	>>Osteoclast differentiation;>>IL-17 signaling pathway;>>Cocaine addiction;>>Amphetamine addiction;>>Alcoholism
Gene Name :	FOSB
Protein Name :	Protein fosB
Human Gene Id :	2354
Human Swiss Prot No :	P53539
Mouse Gene Id :	14282
Mouse Swiss Prot No :	P13346
Immunogen :	The antiserum was produced against synthesized peptide derived from human FosB. AA range:12-61
Specificity :	Fos B Polyclonal Antibody detects endogenous levels of Fos B protein.
Formulation :	Liquid in PBS containing 50% glycerol, 0.5% BSA and 0.02% sodium azide.
Source :	Polyclonal, Rabbit,IgG
Dilution :	WB 1:500 - 1:2000. IHC 1:100 - 1:300. IF 1:200 - 1:1000. ELISA: 1:20000. Not yet tested in other applications.
Purification :	The antibody was affinity-purified from rabbit antiserum by affinity-chromatography using epitope-specific immunogen.

Concentration : 1 mg/ml

Storage Stability : -15°C to -25°C/1 year(Do not lower than -25°C)

Observed Band : 35kD

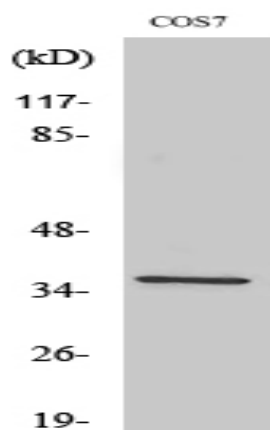
Background : The Fos gene family consists of 4 members: FOS, FOSB, FOSL1, and FOSL2. These genes encode leucine zipper proteins that can dimerize with proteins of the JUN family, thereby forming the transcription factor complex AP-1. As such, the FOS proteins have been implicated as regulators of cell proliferation, differentiation, and transformation. Alternatively spliced transcript variants encoding different isoforms have been found for this gene. [provided by RefSeq, Jul 2008],

Function : function:FosB interacts with Jun proteins enhancing their DNA binding activity.,similarity:Belongs to the bZIP family.,similarity:Belongs to the bZIP family. Fos subfamily.,similarity:Contains 1 bZIP domain.,subunit:Heterodimer.,

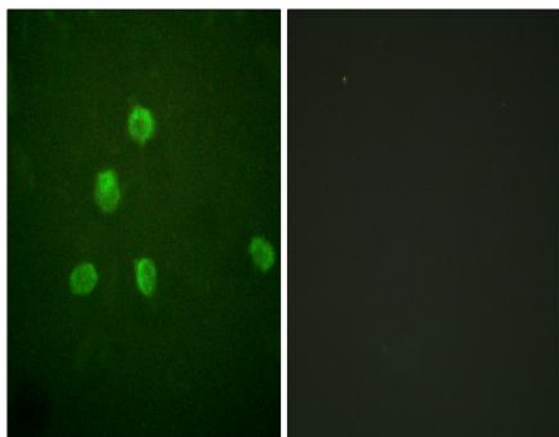
Subcellular Location : Nucleus .

Expression : [Isoform 11]: Expressed in the nucleus accumbens of the striatum (at protein level).

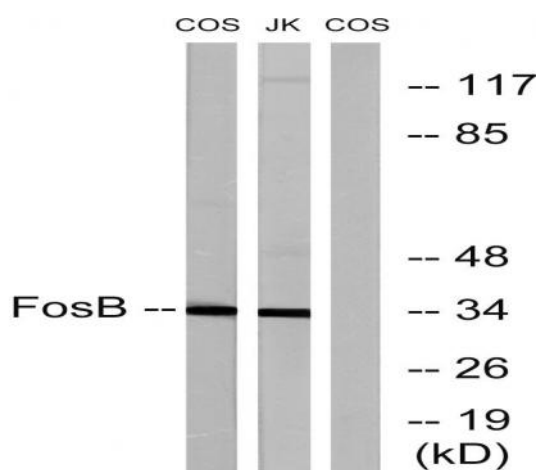
Products Images



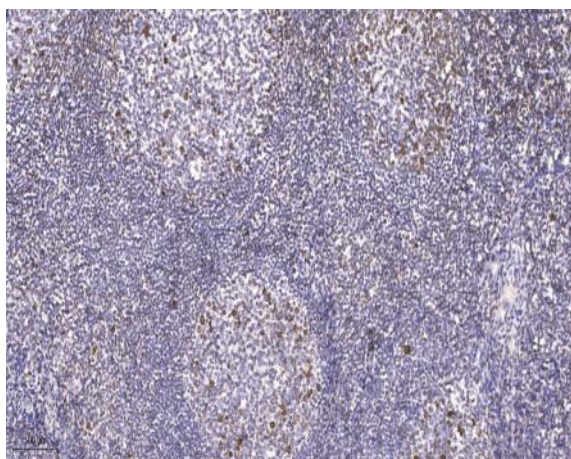
Western Blot analysis of various cells using Fos B Polyclonal Antibody cells nucleus extracted by Minute TM Cytoplasmic and Nuclear Fractionation kit (SC-003, Inventibiotech, MN, USA).



Immunofluorescence analysis of HepG2 cells, using FosB Antibody. The picture on the right is blocked with the synthesized peptide.



Western blot analysis of lysates from COS7 and Jurkat cells, using FosB Antibody. The lane on the right is blocked with the synthesized peptide.



Immunohistochemical analysis of paraffin-embedded human tonsil. 1, Antibody was diluted at 1:200(4° overnight). 2, Tris-EDTA,pH9.0 was used for antigen retrieval. 3,Secondary antibody was diluted at 1:200(room temperature, 45min).