

FoxL1 Polyclonal Antibody

Catalog No :	YT1754
Reactivity :	Human;Monkey
Applications :	WB;IHC;IF;ELISA
Target :	FoxL1
Gene Name :	FOXL1
Protein Name :	Forkhead box protein L1
Human Gene Id :	2300
Human Swiss Prot No :	Q12952
Mouse Swiss Prot No :	Q64731
Immunogen :	The antiserum was produced against synthesized peptide derived from human FOXL1. AA range:121-170
Specificity :	FoxL1 Polyclonal Antibody detects endogenous levels of FoxL1 protein.
Formulation :	Liquid in PBS containing 50% glycerol, 0.5% BSA and 0.02% sodium azide.
Source :	Polyclonal, Rabbit,IgG
Dilution :	WB 1:500 - 1:2000. IHC 1:100 - 1:300. ELISA: 1:20000.. IF 1:50-200
Purification :	The antibody was affinity-purified from rabbit antiserum by affinity-chromatography using epitope-specific immunogen.
Concentration :	1 mg/ml
Storage Stability :	-15°C to -25°C/1 year(Do not lower than -25°C)
Observed Band :	36kD

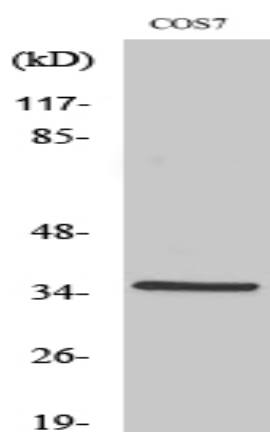
Background : This gene encodes a member of the forkhead/winged helix-box (FOX) family of transcription factors. FOX transcription factors are characterized by a distinct DNA-binding forkhead domain and play critical roles in the regulation of multiple processes including metabolism, cell proliferation and gene expression during ontogenesis. [provided by RefSeq, Nov 2012],

Function : similarity:Contains 1 fork-head DNA-binding domain.,

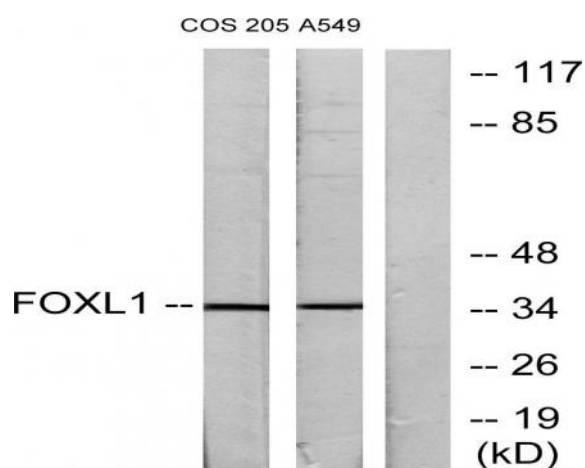
Subcellular Location : Nucleus.

Expression : Chondrosarcoma Lung Metastasis,

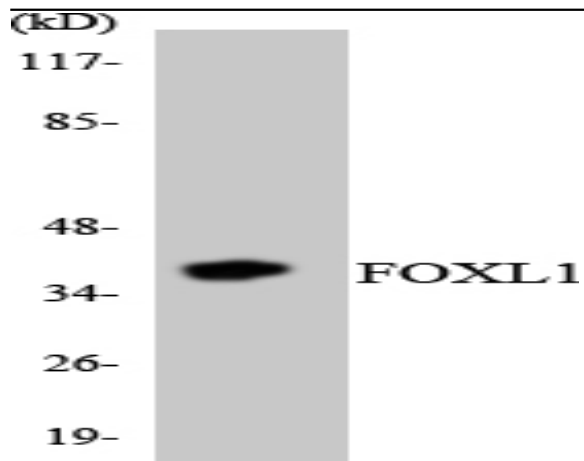
Products Images



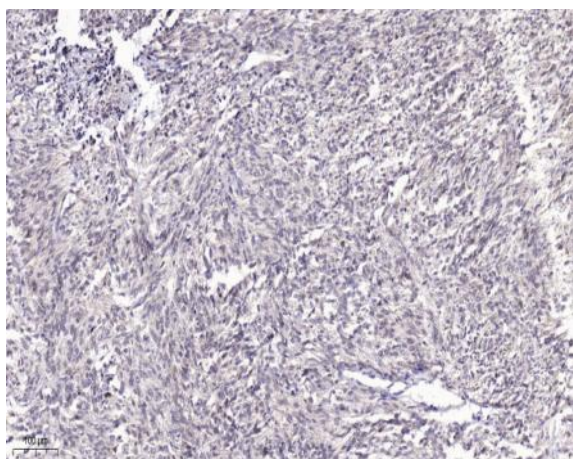
Western Blot analysis of various cells using FoxL1 Polyclonal Antibody cells nucleus extracted by Minute TM Cytoplasmic and Nuclear Fractionation kit (SC-003, Inventbiotech, MN, USA).



Western blot analysis of lysates from COS7 and A549 cells, using FOXL1 Antibody. The lane on the right is blocked with the synthesized peptide.



Western blot analysis of the lysates from HeLa cells using FOXL1 antibody.



Immunohistochemical analysis of paraffin-embedded human Small intestinal stromal tumor. 1, Tris-EDTA, pH9.0 was used for antigen retrieval. 2 Antibody was diluted at 1:200 (4° overnight). 3, Secondary antibody was diluted at 1:200 (room temperature, 45min).