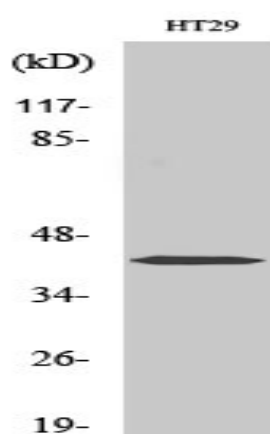


## Fra-1 Polyclonal Antibody

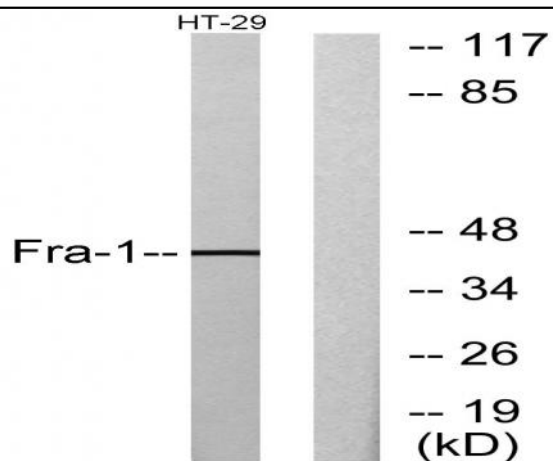
<b>Catalog No :</b>	YT1772
<b>Reactivity :</b>	Human;Mouse;Rat
<b>Applications :</b>	WB;IHC;IF;ELISA
<b>Target :</b>	FRA1
<b>Fields :</b>	>>Wnt signaling pathway;>>Osteoclast differentiation;>>IL-17 signaling pathway;>>Human T-cell leukemia virus 1 infection
<b>Gene Name :</b>	FOSL1
<b>Protein Name :</b>	Fos-related antigen 1
<b>Human Gene Id :</b>	8061
<b>Human Swiss Prot No :</b>	P15407
<b>Mouse Gene Id :</b>	14283
<b>Mouse Swiss Prot No :</b>	P48755
<b>Rat Gene Id :</b>	25445
<b>Rat Swiss Prot No :</b>	P10158
<b>Immunogen :</b>	The antiserum was produced against synthesized peptide derived from human Fra-1. AA range:101-150
<b>Specificity :</b>	Fra-1 Polyclonal Antibody detects endogenous levels of Fra-1 protein.
<b>Formulation :</b>	Liquid in PBS containing 50% glycerol, 0.5% BSA and 0.02% sodium azide.
<b>Source :</b>	Polyclonal, Rabbit,IgG
<b>Dilution :</b>	WB 1:500 - 1:2000. IHC 1:100 - 1:300. ELISA: 1:20000.. IF 1:50-200

<b>Purification :</b>	The antibody was affinity-purified from rabbit antiserum by affinity-chromatography using epitope-specific immunogen.
<b>Concentration :</b>	1 mg/ml
<b>Storage Stability :</b>	-15°C to -25°C/1 year(Do not lower than -25°C)
<b>Observed Band :</b>	43kD
<b>Cell Pathway :</b>	WNT;WNT-T CELL
<b>Background :</b>	The Fos gene family consists of 4 members: FOS, FOSB, FOSL1, and FOSL2. These genes encode leucine zipper proteins that can dimerize with proteins of the JUN family, thereby forming the transcription factor complex AP-1. As such, the FOS proteins have been implicated as regulators of cell proliferation, differentiation, and transformation. Several transcript variants encoding different isoforms have been found for this gene. [provided by RefSeq, Jul 2014],
<b>Function :</b>	similarity:Belongs to the bZIP family.,similarity:Belongs to the bZIP family. Fos subfamily.,similarity:Contains 1 bZIP domain.,subunit:Heterodimer.,
<b>Subcellular Location :</b>	Nucleus .
<b>Expression :</b>	Blood,Endothelial cell,Kidney,Skin,

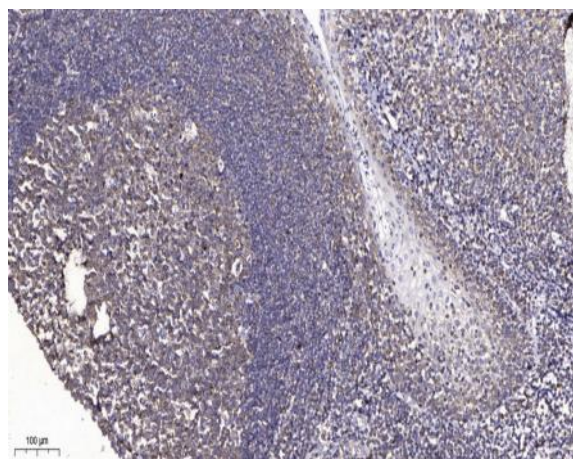
## Products Images



Western Blot analysis of various cells using Fra-1 Polyclonal Antibody diluted at 1:2000



Western blot analysis of lysates from HT-29 cells, using Fra-1 Antibody. The lane on the right is blocked with the synthesized peptide.



Immunohistochemical analysis of paraffin-embedded human tonsil. 1, Antibody was diluted at 1:200(4° overnight). 2, Tris-EDTA,pH9.0 was used for antigen retrieval. 3,Secondary antibody was diluted at 1:200(room temperature, 45min).