

## HoxD8 Polyclonal Antibody

<b>Catalog No :</b>	YT2221
<b>Reactivity :</b>	Human;Rat;Mouse;
<b>Applications :</b>	WB;ELISA
<b>Target :</b>	HoxD8
<b>Gene Name :</b>	HOXD8
<b>Protein Name :</b>	Homeobox protein Hox-D8
<b>Human Gene Id :</b>	3234
<b>Human Swiss Prot No :</b>	P13378
<b>Mouse Swiss Prot No :</b>	P23463
<b>Immunogen :</b>	The antiserum was produced against synthesized peptide derived from human HOXD8. AA range:241-290
<b>Specificity :</b>	HoxD8 Polyclonal Antibody detects endogenous levels of HoxD8 protein.
<b>Formulation :</b>	Liquid in PBS containing 50% glycerol, 0.5% BSA and 0.02% sodium azide.
<b>Source :</b>	Polyclonal, Rabbit,IgG
<b>Dilution :</b>	WB 1:500 - 1:2000. ELISA: 1:40000. Not yet tested in other applications.
<b>Purification :</b>	The antibody was affinity-purified from rabbit antiserum by affinity-chromatography using epitope-specific immunogen.
<b>Concentration :</b>	1 mg/ml
<b>Storage Stability :</b>	-15°C to -25°C/1 year(Do not lower than -25°C)
<b>Observed Band :</b>	32kD

## Background :

This gene belongs to the homeobox family of genes. The homeobox genes encode a highly conserved family of transcription factors that play an important role in morphogenesis in all multicellular organisms. Mammals possess four similar homeobox gene clusters, HOXA, HOXB, HOXC and HOXD, located on different chromosomes, consisting of 9 to 11 genes arranged in tandem. This gene is one of several homeobox HOXD genes located in a cluster on chromosome 2. Deletions that remove the entire HOXD gene cluster or the 5' end of this cluster have been associated with severe limb and genital abnormalities. In addition to effects during embryogenesis, this particular gene may also play a role in adult urogenital tract function. Alternate splicing results in multiple transcript variants.[provided by RefSeq, Dec 2010],

## Function :

function:Sequence-specific transcription factor which is part of a developmental regulatory system that provides cells with specific positional identities on the anterior-posterior axis.,similarity:Belongs to the Antp homeobox family.,similarity:Contains 1 homeobox DNA-binding domain.,

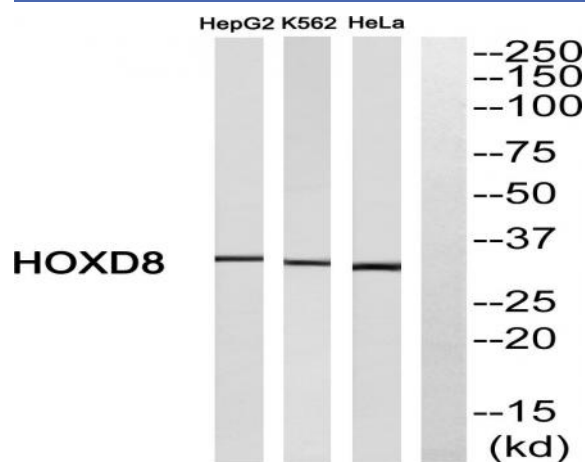
## Subcellular Location :

Nucleus.

## Expression :

Kidney,Peripheral Nervous System,

## Products Images



Western blot analysis of HOXD8 Antibody. The lane on the right is blocked with the HOXD8 peptide.