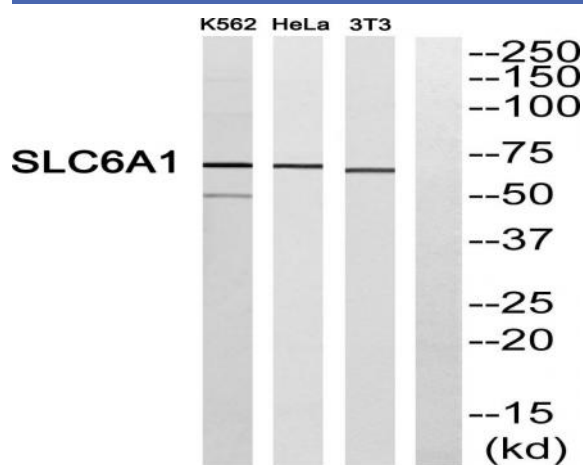


GABA T-1 Polyclonal Antibody

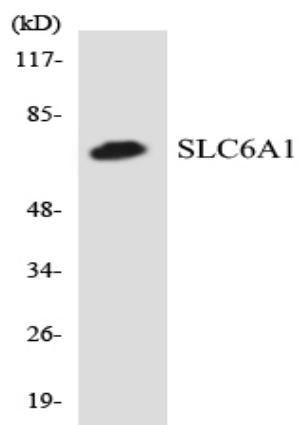
Catalog No :	YT1819
Reactivity :	Human;Mouse;Rat
Applications :	WB;ELISA
Target :	GABA T-1
Fields :	>>Synaptic vesicle cycle;>>GABAergic synapse
Gene Name :	SLC6A1
Protein Name :	Sodium- and chloride-dependent GABA transporter 1
Human Gene Id :	6529
Human Swiss Prot No :	P30531
Mouse Gene Id :	232333
Mouse Swiss Prot No :	P31648
Rat Gene Id :	79212
Rat Swiss Prot No :	P23978
Immunogen :	The antiserum was produced against synthesized peptide derived from human SLC6A1. AA range:381-430
Specificity :	GABA T-1 Polyclonal Antibody detects endogenous levels of GABA T-1 protein.
Formulation :	Liquid in PBS containing 50% glycerol, 0.5% BSA and 0.02% sodium azide.
Source :	Polyclonal, Rabbit,IgG
Dilution :	WB 1:500 - 1:2000. ELISA: 1:40000. Not yet tested in other applications.

Purification :	The antibody was affinity-purified from rabbit antiserum by affinity-chromatography using epitope-specific immunogen.
Concentration :	1 mg/ml
Storage Stability :	-15°C to -25°C/1 year(Do not lower than -25°C)
Observed Band :	67kD
Background :	The SLC6A1 gene encodes a gamma-aminobutyric acid (GABA) transporter, which removes GABA from the synaptic cleft (Hirunsatit et al., 2009 [PubMed 19077666]).[supplied by OMIM, Jul 2009],
Function :	domain:The PDZ domain-binding motif is involved in the interaction with MPP5.,function:Terminates the action of GABA by its high affinity sodium-dependent reuptake into presynaptic terminals.,miscellaneous:This protein is the target of psychomotor stimulants such as amphetamines or cocaine.,similarity:Belongs to the sodium:neurotransmitter symporter (SNF) family.,subcellular location:Localized at the plasma membrane and in a subset of intracellular vesicles. Localized at the presynaptic terminals of interneurons.,subunit:Interacts with MPP5.,
Subcellular Location :	Cell membrane; Multi-pass membrane protein. Membrane; Multi-pass membrane protein. Cell junction, synapse, presynapse . Localized at the plasma membrane and in a subset of intracellular vesicles. Localized at the presynaptic terminals of interneurons (By similarity). .
Expression :	Brain,

Products Images



Western blot analysis of SLC6A1 Antibody. The lane on the right is blocked with the SLC6A1 peptide.



Western blot analysis of the lysates from HeLa cells using SLC6A1 antibody.