

Galectin-1 Polyclonal Antibody

Catalog No :	YT1836
Reactivity :	Human;Rat;Deer
Applications :	WB;ELISA
Target :	Galectin-1
Gene Name :	LGALS1
Protein Name :	Galectin-1
Human Gene Id :	3956
Human Swiss Prot No :	P09382
Mouse Swiss Prot No :	P16045
Rat Gene Id :	56646
Rat Swiss Prot No :	P11762
Immunogen :	Synthesized peptide derived from Galectin-1 . at AA range: 10-90
Specificity :	Galectin-1 Polyclonal Antibody detects endogenous levels of Galectin-1 protein.
Formulation :	Liquid in PBS containing 50% glycerol, 0.5% BSA and 0.02% sodium azide.
Source :	Polyclonal, Rabbit,IgG
Dilution :	WB 1:500 - 1:2000. ELISA: 1:40000. Not yet tested in other applications.
Purification :	The antibody was affinity-purified from rabbit antiserum by affinity-chromatography using epitope-specific immunogen.
Concentration :	1 mg/ml

Storage Stability : -15°C to -25°C/1 year(Do not lower than -25°C)

Observed Band : 15kD

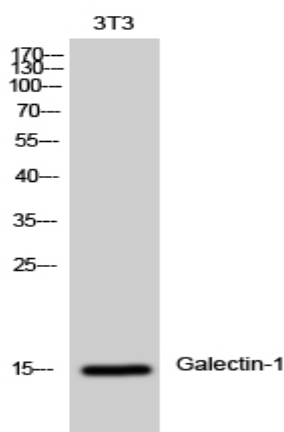
Background : The galectins are a family of beta-galactoside-binding proteins implicated in modulating cell-cell and cell-matrix interactions. This gene product may act as an autocrine negative growth factor that regulates cell proliferation. [provided by RefSeq, Jul 2008],

Function : function:May regulate apoptosis, cell proliferation and cell differentiation. Binds beta-galactoside and a wide array of complex carbohydrates. Inhibits CD45 protein phosphatase activity and therefore the dephosphorylation of Lyn kinase.,online information:Galectin-1,similarity:Contains 1 galectin domain.,subunit:Homodimer. Binds LGALS3BP. Interacts with CD2, CD3, CD4, CD7, CD43 and CD45.,tissue specificity:Cardiac, smooth, and skeletal muscle, neurons, thymus, kidney, placenta and hematopoietic cells.,

Subcellular Location : Secreted, extracellular space, extracellular matrix . Cytoplasm . Secreted . Can be secreted; the secretion is dependent on protein unfolding and facilitated by the cargo receptor TMED10; it results in protein translocation from the cytoplasm into the ERGIC (endoplasmic reticulum-Golgi intermediate compartment) followed by vesicle entry and secretion. .

Expression : Expressed in placenta, maternal decidua and fetal membranes. Within placenta, expressed in trophoblasts, stromal cells, villous endothelium, syncytiotrophoblast apical membrane and villous stroma. Within fetal membranes, expressed in amnion, chorioamniotic mesenchyma and chorion (at protein level). Expressed in cardiac, smooth, and skeletal muscle, neurons, thymus, kidney and hematopoietic cells.

Products Images



Western Blot analysis of 3T3 cells using Galectin-1 Polyclonal Antibody diluted at 1:500