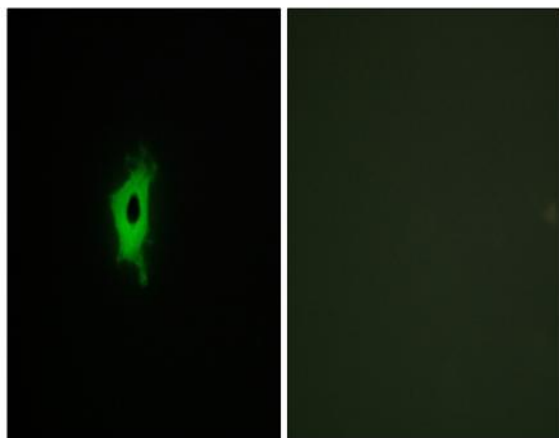


Galectin-2 Polyclonal Antibody

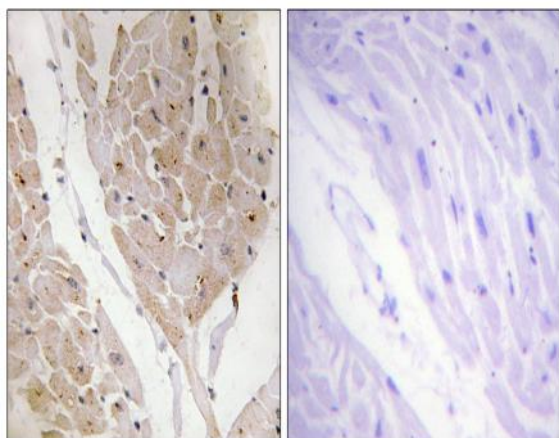
Catalog No :	YT1837
Reactivity :	Human;Mouse;Rat
Applications :	IHC;IF;ELISA
Target :	Galectin-2
Gene Name :	LGALS2
Protein Name :	Galectin-2
Human Gene Id :	3957
Human Swiss Prot No :	P05162
Mouse Gene Id :	107753
Mouse Swiss Prot No :	Q9CQW5
Rat Gene Id :	171134
Rat Swiss Prot No :	Q9Z144
Immunogen :	The antiserum was produced against synthesized peptide derived from human LEG2. AA range:31-80
Specificity :	Galectin-2 Polyclonal Antibody detects endogenous levels of Galectin-2 protein.
Formulation :	Liquid in PBS containing 50% glycerol, 0.5% BSA and 0.02% sodium azide.
Source :	Polyclonal, Rabbit,IgG
Dilution :	IHC 1:100 - 1:300. IF 1:200 - 1:1000. ELISA: 1:5000. Not yet tested in other applications.
Purification :	The antibody was affinity-purified from rabbit antiserum by affinity-chromatography using epitope-specific immunogen.

Concentration :	1 mg/ml
Storage Stability :	-15°C to -25°C/1 year(Do not lower than -25°C)
Molecularweight :	15kD
Background :	The protein encoded by this gene is a soluble beta-galactoside binding lectin. The encoded protein is found as a homodimer and can bind to lymphotoxin-alpha. A single nucleotide polymorphism in an intron of this gene can alter the transcriptional level of the protein, with a resultant increased risk of myocardial infarction. [provided by RefSeq, Jul 2008],
Function :	function:This protein binds beta-galactoside. Its physiological function is not yet known.,online information:Galectin-2,similarity:Contains 1 galectin domain.,subunit:Homodimer.,
Expression :	Colon,

Products Images



Immunofluorescence analysis of COS7 cells, using LEG2 Antibody. The picture on the right is blocked with the synthesized peptide.



Immunohistochemistry analysis of paraffin-embedded human heart tissue, using LEG2 Antibody. The picture on the right is blocked with the synthesized peptide.