

## GALK1 Polyclonal Antibody

<b>Catalog No :</b>	YT1842
<b>Reactivity :</b>	Human;Mouse;Rat
<b>Applications :</b>	WB;IHC;IF;ELISA
<b>Target :</b>	GALK1
<b>Fields :</b>	>>Galactose metabolism;>>Amino sugar and nucleotide sugar metabolism;>>Metabolic pathways;>>Biosynthesis of nucleotide sugars
<b>Gene Name :</b>	GALK1
<b>Protein Name :</b>	Galactokinase
<b>Human Gene Id :</b>	2584
<b>Human Swiss Prot No :</b>	P51570
<b>Mouse Swiss Prot No :</b>	Q9R0N0
<b>Immunogen :</b>	The antiserum was produced against synthesized peptide derived from human GALK1. AA range:1-50
<b>Specificity :</b>	GALK1 Polyclonal Antibody detects endogenous levels of GALK1 protein.
<b>Formulation :</b>	Liquid in PBS containing 50% glycerol, 0.5% BSA and 0.02% sodium azide.
<b>Source :</b>	Polyclonal, Rabbit,IgG
<b>Dilution :</b>	WB 1:500 - 1:2000. IHC 1:100 - 1:300. IF 1:200 - 1:1000. ELISA: 1:10000. Not yet tested in other applications.
<b>Purification :</b>	The antibody was affinity-purified from rabbit antiserum by affinity-chromatography using epitope-specific immunogen.
<b>Concentration :</b>	1 mg/ml

**Storage Stability :** -15°C to -25°C/1 year(Do not lower than -25°C)

**Observed Band :** 45kD

**Cell Pathway :** Galactose metabolism;Amino sugar and nucleotide sugar metabolism;

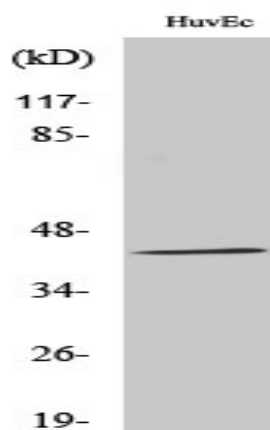
**Background :** Galactokinase is a major enzyme for the metabolism of galactose and its deficiency causes congenital cataracts during infancy and presenile cataracts in the adult population. [provided by RefSeq, Jul 2008],

**Function :** catalytic activity:ATP + D-galactose = ADP + alpha-D-galactose 1-phosphate.,disease:Defects in GALK1 are the cause of galactosemia II [MIM:230200]. It is an autosomal recessive deficiency characterized by congenital cataracts during infancy and presenile cataracts in the adult population. The cataracts are secondary to accumulation of galactitol in the lenses.,function:Major enzyme for galactose metabolism.,pathway:Carbohydrate metabolism; galactose metabolism.,similarity:Belongs to the GHMP kinase family.,similarity:Belongs to the GHMP kinase family. GalK subfamily.,

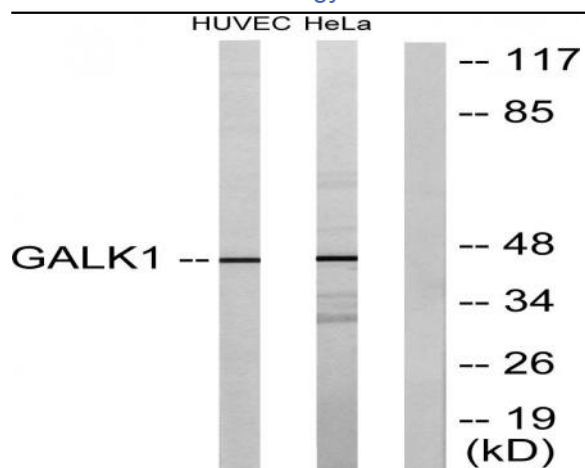
**Subcellular Location :** cytoplasm,cytosol,membrane,extracellular exosome,

**Expression :** Blood,Brain,Fetal brain cortex,Lung,

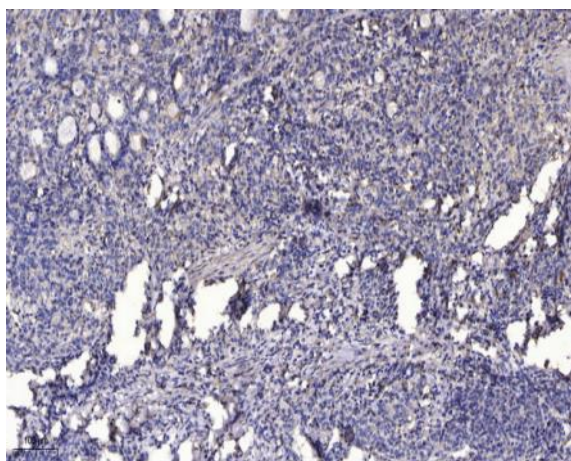
## Products Images



Western Blot analysis of various cells using GALK1 Polyclonal Antibody diluted at 1:1000



Western blot analysis of lysates from HUVEC and HeLa cells, using GALK1 Antibody. The lane on the right is blocked with the synthesized peptide.



Immunohistochemical analysis of paraffin-embedded human Gastric adenocarcinoma. 1, Antibody was diluted at 1:200(4° overnight). 2, Tris-EDTA,pH9.0 was used for antigen retrieval. 3,Secondary antibody was diluted at 1:200(room temperature, 45min).