

## hCAP-G2 Polyclonal Antibody

<b>Catalog No :</b>	YT2105
<b>Reactivity :</b>	Human;Rat;Mouse;
<b>Applications :</b>	WB;IHC;IF;ELISA
<b>Target :</b>	hCAP-G2
<b>Gene Name :</b>	NCAPG2
<b>Protein Name :</b>	Condensin-2 complex subunit G2
<b>Human Gene Id :</b>	54892
<b>Human Swiss Prot No :</b>	Q86XI2
<b>Mouse Swiss Prot No :</b>	Q6DFV1
<b>Immunogen :</b>	The antiserum was produced against synthesized peptide derived from human NCAPG2. AA range:561-610
<b>Specificity :</b>	hCAP-G2 Polyclonal Antibody detects endogenous levels of hCAP-G2 protein.
<b>Formulation :</b>	Liquid in PBS containing 50% glycerol, 0.5% BSA and 0.02% sodium azide.
<b>Source :</b>	Polyclonal, Rabbit,IgG
<b>Dilution :</b>	WB 1:500-2000 IHC 1:100 - 1:300. ELISA: 1:40000. IF 1:50-200
<b>Purification :</b>	The antibody was affinity-purified from rabbit antiserum by affinity-chromatography using epitope-specific immunogen.
<b>Concentration :</b>	1 mg/ml
<b>Storage Stability :</b>	-15°C to -25°C/1 year(Do not lower than -25°C)
<b>Molecularweight :</b>	131kD

## Background :

non-SMC condensin II complex subunit G2(NCAPG2) Homo sapiens This gene encodes a protein that belongs to the Condensin2nSMC family of proteins. The encoded protein is a regulatory subunit of the condensin II complex which, along with the condensin I complex, plays a role in chromosome assembly and segregation during mitosis. A similar protein in mouse is required for early development of the embryo. Alternate splicing results in multiple transcript variants. [provided by RefSeq, Aug 2013],

## Function :

function:Regulatory subunit of the condensin-2 complex, a complex which establishes mitotic chromosome architecture and is involved in physical rigidity of the chromatid axis.,similarity:Contains 1 HEAT repeat.,subunit:Component of the condensin-2 complex, which contains the SMC2 and SMC4 heterodimer, and 3 non SMC subunits that probably regulate the complex: NCAPH2, NCAPD3 and NCAPG2.,

## Subcellular Location :

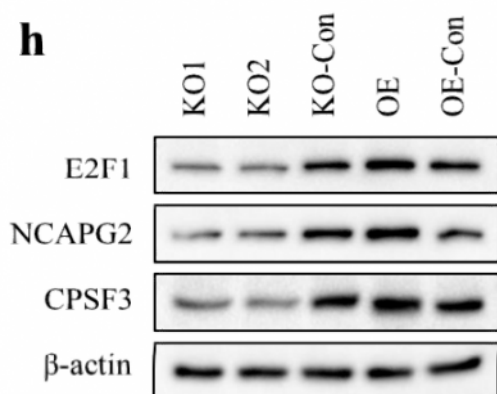
Nucleus .

## Expression :

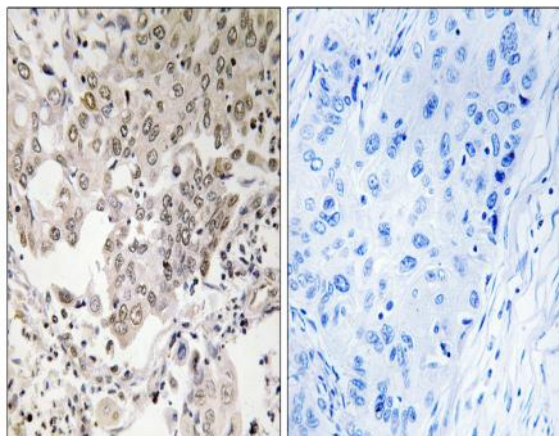
Endometrium,Epithelium,Ovary,Testis,

## Products Images

### h



CPSF3 Promotes Pre-mRNA Splicing and Prevents CircRNA Cyclization in Hepatocellular Carcinoma. Cancers Qubo Zhu WB Human 1:1000 HepG2 cell,HuH7 cell



Immunohistochemistry analysis of paraffin-embedded human lung carcinoma, using NCAPG2 Antibody. The picture on the right is blocked with the synthesized peptide.