

GATA-6 Polyclonal Antibody

Catalog No :	YT1865
Reactivity :	Human;Mouse;Rat
Applications :	WB;ELISA
Target :	GATA-6
Gene Name :	GATA6
Protein Name :	Transcription factor GATA-6
Human Gene Id :	2627
Human Swiss Prot No :	Q92908
Mouse Gene Id :	14465
Mouse Swiss Prot No :	Q61169
Rat Gene Id :	29300
Rat Swiss Prot No :	P46153
Immunogen :	The antiserum was produced against synthesized peptide derived from human GATA6. AA range:461-510
Specificity :	GATA-6 Polyclonal Antibody detects endogenous levels of GATA-6 protein.
Formulation :	Liquid in PBS containing 50% glycerol, 0.5% BSA and 0.02% sodium azide.
Source :	Polyclonal, Rabbit,IgG
Dilution :	WB 1:500 - 1:2000. ELISA: 1:10000. Not yet tested in other applications.
Purification :	The antibody was affinity-purified from rabbit antiserum by affinity-chromatography using epitope-specific immunogen.

Concentration : 1 mg/ml

Storage Stability : -15°C to -25°C/1 year(Do not lower than -25°C)

Observed Band : 45kD

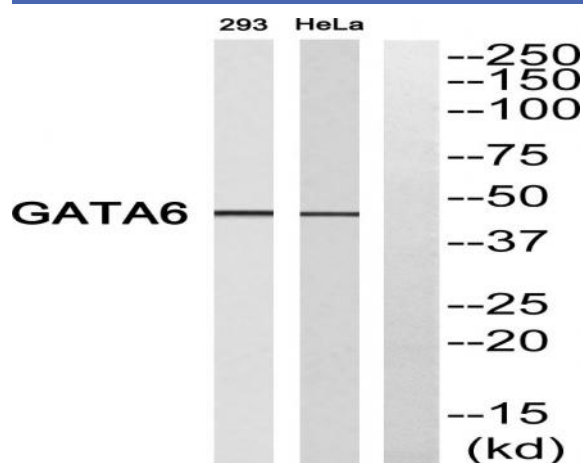
Background : This gene is a member of a small family of zinc finger transcription factors that play an important role in the regulation of cellular differentiation and organogenesis during vertebrate development. This gene is expressed during early embryogenesis and localizes to endo- and mesodermally derived cells during later embryogenesis and thereby plays an important role in gut, lung, and heart development. Mutations in this gene are associated with several congenital defects. [provided by RefSeq, Mar 2012],

Function : function:Thought to be important for regulating terminal differentiation and/or proliferation.,similarity:Contains 2 GATA-type zinc fingers.,tissue specificity:Expressed in heart, gut and gut-derived tissues.,

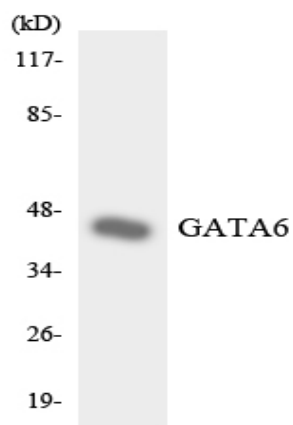
Subcellular Location : Nucleus .

Expression : Expressed in heart, gut and gut-derived tissues. Expressed in skin upper pilosebaceous unit. Expression is decreased or lost in acne lesions (PubMed:33082341).

Products Images



Western blot analysis of GATA6 Antibody. The lane on the right is blocked with the GATA6 peptide.



Western blot analysis of the lysates from HepG2 cells using GATA6 antibody.