

GBP3 Polyclonal Antibody

Catalog No :	YT1868
Reactivity :	Human;Mouse
Applications :	WB;IHC;IF;ELISA
Target :	GBP3
Fields :	>>NOD-like receptor signaling pathway
Gene Name :	GBP3
Protein Name :	Guanylate-binding protein 3
Human Gene Id :	2635
Human Swiss Prot No :	Q9H0R5
Immunogen :	The antiserum was produced against synthesized peptide derived from human GBP3. AA range:481-530
Specificity :	GBP3 Polyclonal Antibody detects endogenous levels of GBP3 protein.
Formulation :	Liquid in PBS containing 50% glycerol, 0.5% BSA and 0.02% sodium azide.
Source :	Polyclonal, Rabbit,IgG
Dilution :	WB 1:500 - 1:2000. IHC 1:100 - 1:300. ELISA: 1:10000.. IF 1:50-200
Purification :	The antibody was affinity-purified from rabbit antiserum by affinity-chromatography using epitope-specific immunogen.
Concentration :	1 mg/ml
Storage Stability :	-15°C to -25°C/1 year(Do not lower than -25°C)
Observed Band :	64kD

Background :

This gene encodes a member of the guanylate-binding protein (GBP) family. GBPs specifically bind guanine nucleotides (GMP, GDP, and GTP) and contain two of the three consensus motifs found in typical GTP-binding proteins. The encoded protein interacts with a member of the germinal center kinase family. Multiple transcript variants encoding different isoforms have been found for this gene. [provided by RefSeq, Jan 2016],

Function :

function: Binds GTP, GDP and GMP., sequence caution: Contaminating sequence. Potential poly-A sequence., sequence caution: Unlikely isoform. Aberrant splice sites., similarity: Belongs to the GBP family.,

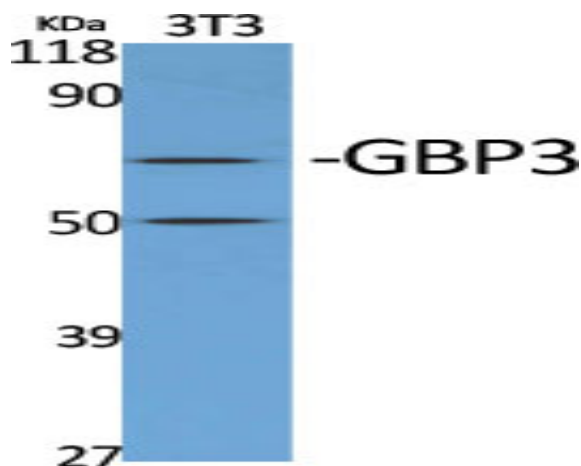
Subcellular Location :

Cytoplasm . Cytoplasm, perinuclear region . Golgi apparatus membrane . Heterodimers with GBP1, GBP2 and GBP5 localize in the compartment of the prenylated GBPs: with GBP1 in a vesicle-like compartment, with GBP2, around the nucleus and with GBP-5, at the Golgi apparatus. .

Expression :

Brain, Prostate,

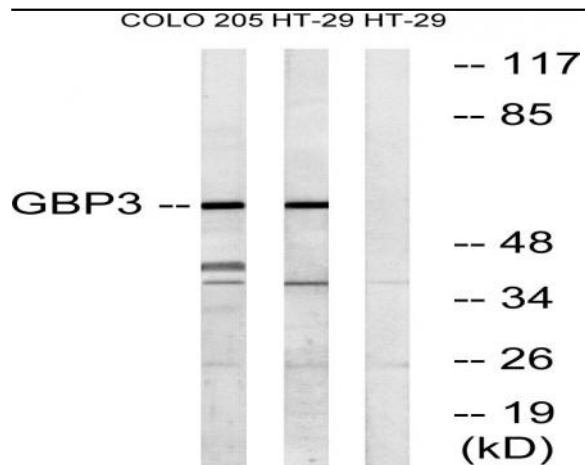
Products Images



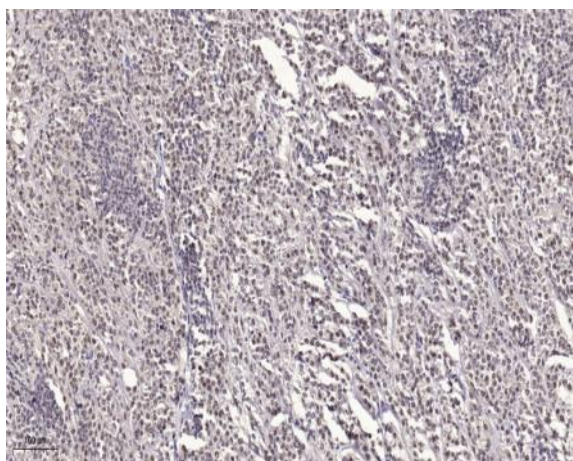
Western Blot analysis of various cells using GBP3 Polyclonal Antibody



Western Blot analysis of COLO205 cells using GBP3 Polyclonal Antibody



Western blot analysis of lysates from HT-29 and COLO cells, using GBP3 Antibody. The lane on the right is blocked with the synthesized peptide.



Immunohistochemical analysis of paraffin-embedded human small intestinal carcinoma tissue. 1, primary Antibody was diluted at 1:200 (4° overnight). 2, Sodium citrate pH 6.0 was used for antigen retrieval (>98° C, 20min). 3, Secondary antibody was diluted at 1:200