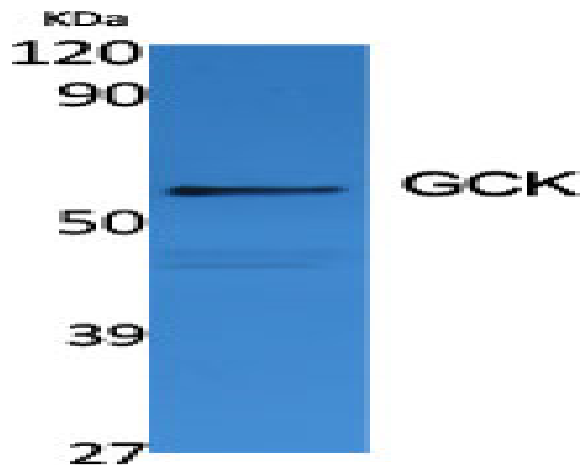


GCK Polyclonal Antibody

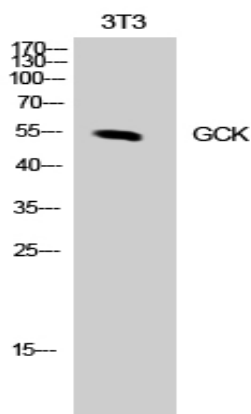
Catalog No :	YT1872
Reactivity :	Human;Mouse;Rat
Applications :	WB;ELISA
Target :	GCK
Fields :	>>Glycolysis / Gluconeogenesis;>>Galactose metabolism;>>Starch and sucrose metabolism;>>Amino sugar and nucleotide sugar metabolism;>>Neomycin, kanamycin and gentamicin biosynthesis;>>Metabolic pathways;>>Carbon metabolism;>>Biosynthesis of nucleotide sugars;>>Insulin signaling pathway;>>Insulin secretion;>>Prolactin signaling pathway;>>Glucagon signaling pathway;>>Type II diabetes mellitus;>>Maturity onset diabetes of the young;>>Central carbon metabolism in cancer
Gene Name :	GCK
Protein Name :	Glucokinase
Human Gene Id :	2645
Human Swiss Prot No :	P35557
Mouse Gene Id :	103988
Mouse Swiss Prot No :	P52792
Rat Gene Id :	24385
Rat Swiss Prot No :	P17712
Immunogen :	The antiserum was produced against synthesized peptide derived from human GCK. AA range:43-92
Specificity :	GCK Polyclonal Antibody detects endogenous levels of GCK protein.
Formulation :	Liquid in PBS containing 50% glycerol, 0.5% BSA and 0.02% sodium azide.

Source :	Polyclonal, Rabbit,IgG
Dilution :	WB 1:500 - 1:2000. ELISA: 1:10000. Not yet tested in other applications.
Purification :	The antibody was affinity-purified from rabbit antiserum by affinity-chromatography using epitope-specific immunogen.
Concentration :	1 mg/ml
Storage Stability :	-15°C to -25°C/1 year(Do not lower than -25°C)
Observed Band :	55kD
Cell Pathway :	Glycolysis / Gluconeogenesis;Galactose metabolism;Starch and sucrose metabolism;Amino sugar and nucleotide sugar metabolism;Insulin_Receptor;Type II diabetes mellitus;Maturity onset diabetes of the yo
Background :	Hexokinases phosphorylate glucose to produce glucose-6-phosphate, the first step in most glucose metabolism pathways. Alternative splicing of this gene results in three tissue-specific forms of glucokinase, one found in pancreatic islet beta cells and two found in liver. The protein localizes to the outer membrane of mitochondria. In contrast to other forms of hexokinase, this enzyme is not inhibited by its product glucose-6-phosphate but remains active while glucose is abundant. Mutations in this gene have been associated with non-insulin dependent diabetes mellitus (NIDDM), maturity onset diabetes of the young, type 2 (MODY2) and persistent hyperinsulinemic hypoglycemia of infancy (PHHI). [provided by RefSeq, Apr 2009],
Function :	catalytic activity:ATP + D-glucose = ADP + D-glucose 6-phosphate.,disease:Defects in GCK are the cause of familial hyperinsulinemic hypoglycemia type 3 (HHF3) [MIM:602485]. HHF is the most common cause of persistent hypoglycemia in infancy. Unless early and aggressive intervention is undertaken, brain damage from recurrent episodes of hypoglycemia may occur.,disease:Defects in GCK are the cause of maturity onset diabetes of the young type 2 (MODY2) [MIM:125851]; also shortened MODY-2. MODY [MIM:606391] is a form of diabetes mellitus characterized by autosomal dominant transmission and early age of onset. Mutations in GCK result in mild chronic hyperglycemia due to reduced pancreatic beta cell responsiveness to glucose, decreased net accumulation of hepatic glycogen and increased hepatic gluconeogenesis following meals.,enzyme regulation:The use of alternative promoters apparently enables
Subcellular Location :	Cytoplasm . Nucleus . Mitochondrion . Under low glucose concentrations, GCK associates with GCKR and the inactive complex is recruited to the hepatocyte nucleus. .

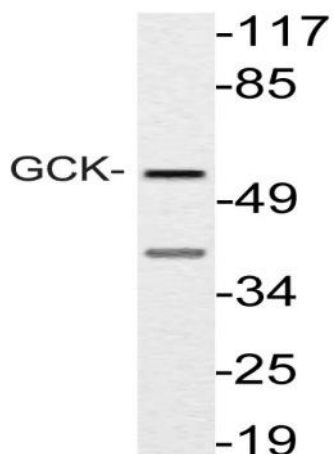
Products Images



Western Blot analysis of various cells using GCK Polyclonal Antibody diluted at 1:1000



Western Blot analysis of NIH-3T3 cells using GCK Polyclonal Antibody diluted at 1:1000



Western blot analysis of lysate from NIH/3T3 cells, using GCK antibody.