

GDF-8 Polyclonal Antibody

Catalog No :	YT1890
Reactivity :	Human;Mouse
Applications :	WB;IHC;IF;ELISA
Target :	GDF-8
Fields :	>>Cytokine-cytokine receptor interaction
Gene Name :	MSTN
Protein Name :	Growth/differentiation factor 8
Human Gene Id :	2660
Human Swiss Prot No :	O14793
Mouse Gene Id :	17700
Mouse Swiss Prot No :	O08689
Immunogen :	The antiserum was produced against synthesized peptide derived from human GDF-8. AA range:38-87
Specificity :	GDF-8 Polyclonal Antibody detects endogenous levels of GDF-8 protein.
Formulation :	Liquid in PBS containing 50% glycerol, 0.5% BSA and 0.02% sodium azide.
Source :	Polyclonal, Rabbit,IgG
Dilution :	WB 1:500-2000 IHC 1:100 - 1:300. ELISA: 1:10000. IF 1:50-200
Purification :	The antibody was affinity-purified from rabbit antiserum by affinity-chromatography using epitope-specific immunogen.
Concentration :	1 mg/ml

Storage Stability : -15°C to -25°C/1 year(Do not lower than -25°C)

Molecularweight : 43kD

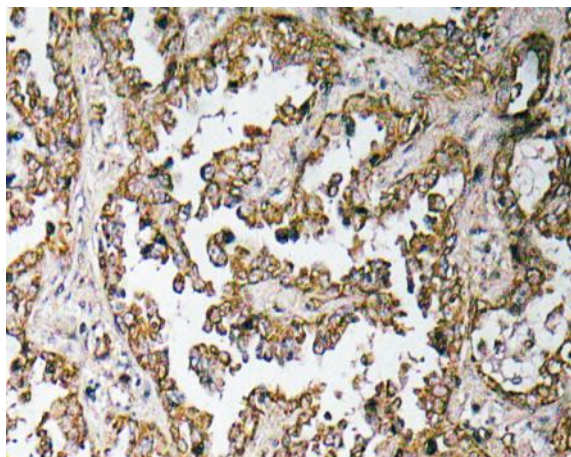
Background : myostatin(MSTN) Homo sapiens This gene encodes a secreted ligand of the TGF-beta (transforming growth factor-beta) superfamily of proteins. Ligands of this family bind various TGF-beta receptors leading to recruitment and activation of SMAD family transcription factors that regulate gene expression. The encoded preproprotein is proteolytically processed to generate each subunit of the disulfide-linked homodimer. This protein negatively regulates skeletal muscle cell proliferation and differentiation. Mutations in this gene are associated with increased skeletal muscle mass in humans and other mammals. [provided by RefSeq, Jul 2016],

Function : function:Acts specifically as a negative regulator of skeletal muscle growth.,online information:Myostatin entry,similarity:Belongs to the TGF-beta family.,subunit:Homodimer; disulfide-linked (By similarity). Interacts with WFIKKN2, leading to inhibit its activity.,

Subcellular Location : Secreted .

Expression : Colon,Muscle,Pericardium,Skeletal muscle,

Products Images



Immunohistochemistry analysis of GDF-8 antibody in paraffin-embedded human lung carcinoma tissue.