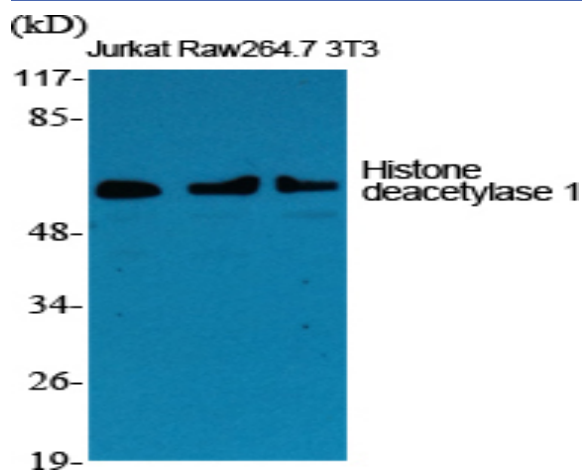


Histone deacetylase 1 Polyclonal Antibody

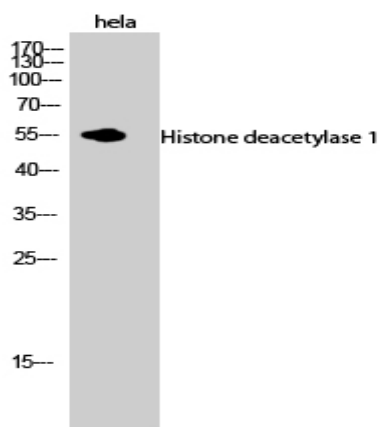
Catalog No :	YT2145
Reactivity :	Human;Mouse;Rat
Applications :	WB;IHC;IF;ELISA
Target :	HDAC1
Fields :	>>Cell cycle;>>Longevity regulating pathway - multiple species;>>Notch signaling pathway;>>Neutrophil extracellular trap formation;>>Thyroid hormone signaling pathway;>>Huntington disease;>>Amphetamine addiction;>>Alcoholism;>>Human papillomavirus infection;>>Epstein-Barr virus infection;>>Pathways in cancer;>>Transcriptional misregulation in cancer;>>Viral carcinogenesis;>>MicroRNAs in cancer;>>Chronic myeloid leukemia
Gene Name :	HDAC1
Protein Name :	Histone deacetylase 1
Human Gene Id :	3065
Human Swiss Prot No :	Q13547
Mouse Gene Id :	433759
Mouse Swiss Prot No :	O09106
Rat Gene Id :	297893
Rat Swiss Prot No :	Q4QQW4
Immunogen :	The antiserum was produced against synthesized peptide derived from human HDAC1. AA range:433-482
Specificity :	Histone deacetylase 1 Polyclonal Antibody detects endogenous levels of Histone deacetylase 1 protein.
Formulation :	Liquid in PBS containing 50% glycerol, 0.5% BSA and 0.02% sodium azide.

Source :	Polyclonal, Rabbit,IgG
Dilution :	WB 1:500 - 1:2000. IHC 1:100 - 1:300. IF 1:200 - 1:1000. ELISA: 1:10000. Not yet tested in other applications.
Purification :	The antibody was affinity-purified from rabbit antiserum by affinity-chromatography using epitope-specific immunogen.
Concentration :	1 mg/ml
Storage Stability :	-15°C to -25°C/1 year(Do not lower than -25°C)
Observed Band :	55kD
Cell Pathway :	Cell_Cycle_G1S;Cell_Cycle_G2M_DNA; Protein_Acetylation
Background :	<p>Histone acetylation and deacetylation, catalyzed by multisubunit complexes, play a key role in the regulation of eukaryotic gene expression. The protein encoded by this gene belongs to the histone deacetylase/acuc/apha family and is a component of the histone deacetylase complex. It also interacts with retinoblastoma tumor-suppressor protein and this complex is a key element in the control of cell proliferation and differentiation. Together with metastasis-associated protein-2, it deacetylates p53 and modulates its effect on cell growth and apoptosis. [provided by RefSeq, Jul 2008],</p>
Function :	<p>catalytic activity:Hydrolysis of an N(6)-acetyl-lysine residue of a histone to yield a deacetylated histone.,function:Responsible for the deacetylation of lysine residues on the N-terminal part of the core histones (H2A, H2B, H3 and H4). Histone deacetylation gives a tag for epigenetic repression and plays an important role in transcriptional regulation, cell cycle progression and developmental events. Histone deacetylases act via the formation of large multiprotein complexes.,PTM:Phosphorylation on Ser-421 and Ser-423 promotes enzymatic activity and interactions with NuRD and SIN3 complexes.,PTM:Sumoylated on Lys-444 and Lys-476; which promotes enzymatic activity. Desumoylated by SENP1.,similarity:Belongs to the histone deacetylase family. Type 1 subfamily.,subunit:Part of the core histone deacetylase (HDAC) complex composed of HDAC1, HDAC2, RBBP4 and RBBP7. The core complex associates</p>
Subcellular Location :	Nucleus .
Expression :	Ubiquitous, with higher levels in heart, pancreas and testis, and lower levels in kidney and brain.

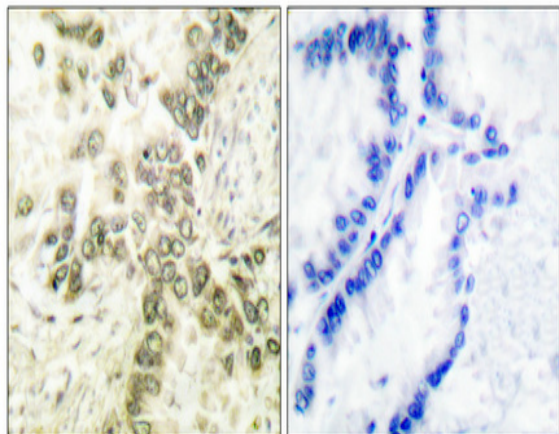
Products Images



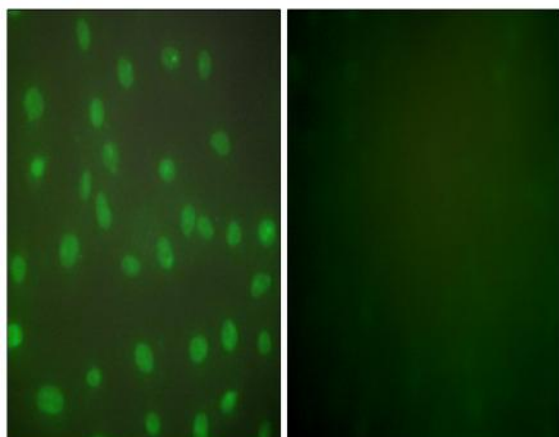
Western Blot analysis of various cells using Histone deacetylase 1 Polyclonal Antibody diluted at 1:1000



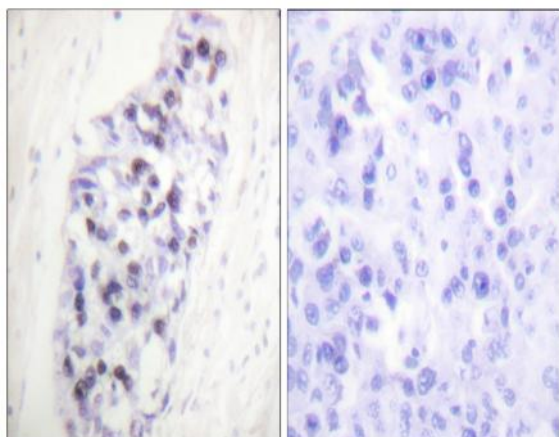
Western Blot analysis of hela cells using Histone deacetylase 1 Polyclonal Antibody diluted at 1:1000



Immunohistochemical analysis of paraffin-embedded Human lung cancer. Antibody was diluted at 1:100(4° overnight). High-pressure and temperature Tris-EDTA,pH8.0 was used for antigen retrieval. Negative contrl (right) obtaned from antibody was pre-absorbed by immunogen peptide.



Immunofluorescence analysis of NIH/3T3 cells, using HDAC1 Antibody. The picture on the right is blocked with the synthesized peptide.



Immunohistochemistry analysis of paraffin-embedded human lung carcinoma tissue, using HDAC1 Antibody. The picture on the right is blocked with the synthesized peptide.