

GFR α -1 Polyclonal Antibody

Catalog No :	YT1896
Reactivity :	Human;Mouse;Rat
Applications :	IHC;IF;WB;ELISA
Target :	GFR α -1
Gene Name :	GFRA1
Protein Name :	GDNF family receptor alpha-1
Human Gene Id :	2674
Human Swiss Prot No :	P56159
Mouse Gene Id :	14585
Mouse Swiss Prot No :	P97785
Rat Gene Id :	25454
Rat Swiss Prot No :	Q62997
Immunogen :	The antiserum was produced against synthesized peptide derived from human GFR alpha-1. AA range:51-100
Specificity :	GFR α -1 Polyclonal Antibody detects endogenous levels of GFR α -1 protein.
Formulation :	Liquid in PBS containing 50% glycerol, 0.5% BSA and 0.02% sodium azide.
Source :	Polyclonal, Rabbit,IgG
Dilution :	WB 1:500-2000 IHC 1:100 - 1:300. ELISA: 1:10000.. IF 1:50-200
Purification :	The antibody was affinity-purified from rabbit antiserum by affinity-chromatography using epitope-specific immunogen.

Concentration : 1 mg/ml

Storage Stability : -15°C to -25°C/1 year(Do not lower than -25°C)

Molecularweight : 51kD

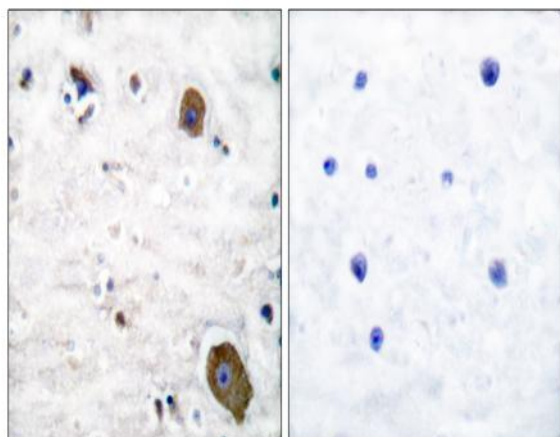
Background : This gene encodes a member of the glial cell line-derived neurotrophic factor receptor (GDNFR) family of proteins. The encoded preproprotein is proteolytically processed to generate the mature receptor. Glial cell line-derived neurotrophic factor (GDNF) and neurturin (NTN) are two structurally related, potent neurotrophic factors that play key roles in the control of neuron survival and differentiation. This receptor is a glycosylphosphatidylinositol (GPI)-linked cell surface receptor for both GDNF and NTN, and mediates activation of the RET tyrosine kinase receptor. This gene is a candidate gene for Hirschsprung disease. Alternative splicing results in multiple transcript variants, at least one of which encodes a preproprotein that is proteolytically processed. [provided by RefSeq, Jan 2016],

Function : function:Receptor for GDNF. Mediates the GDNF-induced autophosphorylation and activation of the RET receptor.,similarity:Belongs to the GDNFR family.,subunit:2 molecules of GDNFR-alpha are thought to form a complex with the disulfide-linked GDNF dimer and with 2 molecules of RET.,

Subcellular Location : Cell membrane ; Lipid-anchor, GPI-anchor . Golgi apparatus, trans-Golgi network . Endosome . Endosome, multivesicular body . Localizes mainly to the plasma membrane. In the presence of SORL1, shifts to vesicular structures, including trans-Golgi network, endosomes and multivesicular bodies. .

Expression : Eye,Kidney,Substantia nigra,Thyroid carcinoma,

Products Images



Immunohistochemistry analysis of paraffin-embedded human brain tissue, using GFR alpha-1 Antibody. The picture on the right is blocked with the synthesized peptide.