

**GOLT1A Polyclonal Antibody**

<b>Catalog No :</b>	YT1943
<b>Reactivity :</b>	Human;Mouse
<b>Applications :</b>	IHC;IF;ELISA
<b>Target :</b>	GOLT1A
<b>Gene Name :</b>	GOLT1A
<b>Protein Name :</b>	Vesicle transport protein GOT1A
<b>Human Gene Id :</b>	127845
<b>Human Swiss Prot No :</b>	Q6ZVE7
<b>Mouse Gene Id :</b>	68338
<b>Mouse Swiss Prot No :</b>	Q9DCQ3
<b>Immunogen :</b>	The antiserum was produced against synthesized peptide derived from human GOLT1A. AA range:40-89
<b>Specificity :</b>	GOLT1A Polyclonal Antibody detects endogenous levels of GOLT1A protein.
<b>Formulation :</b>	Liquid in PBS containing 50% glycerol, 0.5% BSA and 0.02% sodium azide.
<b>Source :</b>	Polyclonal, Rabbit,IgG
<b>Dilution :</b>	IHC 1:100 - 1:300. ELISA: 1:5000.. IF 1:50-200
<b>Purification :</b>	The antibody was affinity-purified from rabbit antiserum by affinity-chromatography using epitope-specific immunogen.
<b>Concentration :</b>	1 mg/ml
<b>Storage Stability :</b>	-15°C to -25°C/1 year(Do not lower than -25°C)

**Molecularweight :** 15kD

---

**Background :** function:May be involved in fusion of ER-derived transport vesicles with the Golgi complex.,similarity:Belongs to the GOT1 family.,

---

**Function :** function:May be involved in fusion of ER-derived transport vesicles with the Golgi complex.,similarity:Belongs to the GOT1 family.,

---

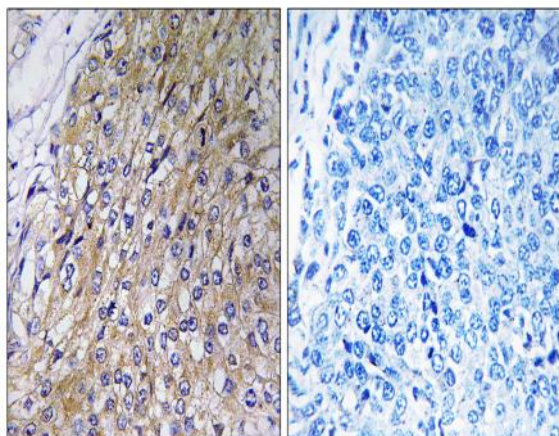
**Subcellular Location :** Golgi apparatus membrane ; Multi-pass membrane protein .

---

**Expression :** Cerebellum,

---

## Products Images



Immunohistochemistry analysis of paraffin-embedded human breast carcinoma tissue, using GOLT1A Antibody. The picture on the right is blocked with the synthesized peptide.