

## HoxB5 Polyclonal Antibody

<b>Catalog No :</b>	YT2216
<b>Reactivity :</b>	Human;Mouse
<b>Applications :</b>	WB;ELISA
<b>Target :</b>	HoxB5
<b>Gene Name :</b>	HOXB5
<b>Protein Name :</b>	Homeobox protein Hox-B5
<b>Human Gene Id :</b>	3215
<b>Human Swiss Prot No :</b>	P09067
<b>Mouse Gene Id :</b>	15413
<b>Mouse Swiss Prot No :</b>	P09079
<b>Immunogen :</b>	The antiserum was produced against synthesized peptide derived from human HoxB5. AA range:150-199
<b>Specificity :</b>	HoxB5 Polyclonal Antibody detects endogenous levels of HoxB5 protein.
<b>Formulation :</b>	Liquid in PBS containing 50% glycerol, 0.5% BSA and 0.02% sodium azide.
<b>Source :</b>	Polyclonal, Rabbit,IgG
<b>Dilution :</b>	WB 1:500 - 1:2000. ELISA: 1:10000. Not yet tested in other applications.
<b>Purification :</b>	The antibody was affinity-purified from rabbit antiserum by affinity-chromatography using epitope-specific immunogen.
<b>Concentration :</b>	1 mg/ml
<b>Storage Stability :</b>	-15°C to -25°C/1 year(Do not lower than -25°C)

**Observed Band :** 29kD

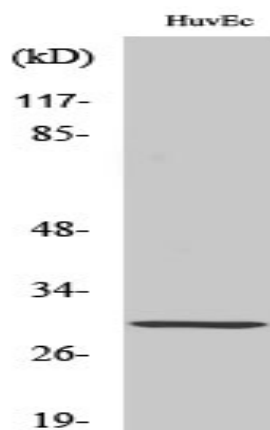
**Background :** This gene is a member of the Antp homeobox family and encodes a nuclear protein with a homeobox DNA-binding domain. It is included in a cluster of homeobox B genes located on chromosome 17. The encoded protein functions as a sequence-specific transcription factor that is involved in lung and gut development. Increased expression of this gene is associated with a distinct biologic subset of acute myeloid leukemia (AML) and the occurrence of bronchopulmonary sequestration (BPS) and congenital cystic adenomatoid malformation (CCAM) tissue. [provided by RefSeq, Jul 2008],

**Function :** developmental stage:Embryo.,function:Sequence-specific transcription factor which is part of a developmental regulatory system that provides cells with specific positional identities on the anterior-posterior axis.,similarity:Belongs to the Antp homeobox family.,similarity:Contains 1 homeobox DNA-binding domain.,tissue specificity:Spinal cord.,

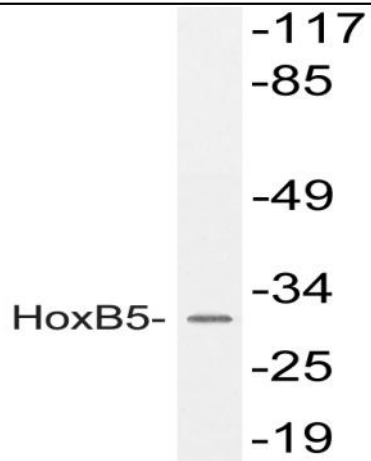
**Subcellular Location :** Nucleus.

**Expression :** Spinal cord.

## Products Images



Western Blot analysis of various cells using HoxB5 Polyclonal Antibody cells nucleus extracted by Minute TM Cytoplasmic and Nuclear Fractionation kit (SC-003, Inventbiotech, MN, USA).



Western blot analysis of lysate from HUVEC cells, using HoxB5 antibody.