

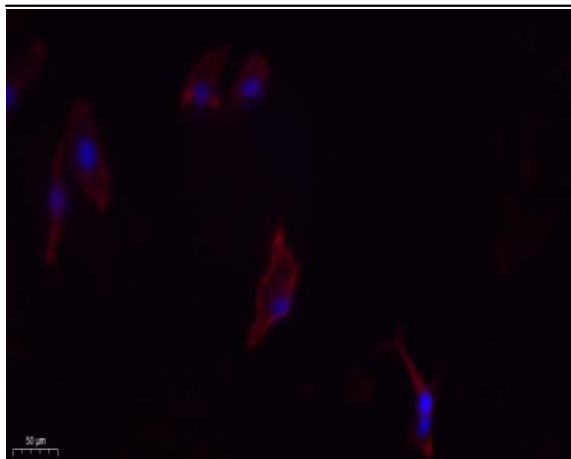
## IL-2 Polyclonal Antibody

<b>Catalog No :</b>	YT2323
<b>Reactivity :</b>	Human;Mouse;Rat
<b>Applications :</b>	WB;IHC;IF;ELISA
<b>Target :</b>	IL-2
<b>Fields :</b>	>>Cytokine-cytokine receptor interaction;>>Viral protein interaction with cytokine and cytokine receptor;>>PI3K-Akt signaling pathway;>>C-type lectin receptor signaling pathway;>>JAK-STAT signaling pathway;>>Th1 and Th2 cell differentiation;>>Th17 cell differentiation;>>T cell receptor signaling pathway;>>Intestinal immune network for IgA production;>>Type I diabetes mellitus;>>Yersinia infection;>>Chagas disease;>>Measles;>>Human T-cell leukemia virus 1 infection;>>Coronavirus disease - COVID-19;>>Pathways in cancer;>>Autoimmune thyroid disease;>>Inflammatory bowel disease;>>Allograft rejection;>>Graft-versus-host disease
<b>Gene Name :</b>	IL2
<b>Protein Name :</b>	Interleukin-2
<b>Human Gene Id :</b>	3558
<b>Human Swiss Prot No :</b>	P60568
<b>Mouse Swiss Prot No :</b>	P04351
<b>Rat Gene Id :</b>	116562
<b>Rat Swiss Prot No :</b>	P17108
<b>Immunogen :</b>	The antiserum was produced against synthesized peptide derived from human IL-2. AA range:16-65
<b>Specificity :</b>	IL-2 Polyclonal Antibody detects endogenous levels of IL-2 protein.
<b>Formulation :</b>	Liquid in PBS containing 50% glycerol, 0.5% BSA and 0.02% sodium azide.

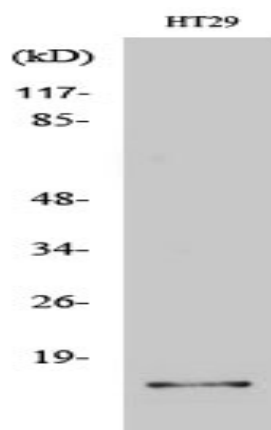
<b>Source :</b>	Polyclonal, Rabbit,IgG
<b>Dilution :</b>	WB 1:500 - 1:2000. IHC: 1:100-300 ELISA: 1:20000. IF 1:100-300 Not yet tested in other applications.
<b>Purification :</b>	The antibody was affinity-purified from rabbit antiserum by affinity-chromatography using epitope-specific immunogen.
<b>Concentration :</b>	1 mg/ml
<b>Storage Stability :</b>	-15°C to -25°C/1 year(Do not lower than -25°C)
<b>Observed Band :</b>	15kD
<b>Cell Pathway :</b>	Cytokine-cytokine receptor interaction;Jak_STAT;T_Cell_Receptor;Intestinal immune network for IgA production;Type I diabetes mellitus;Autoimmune thyroid disease;Allograft rejection;Graft-versus-host d
<b>Background :</b>	The protein encoded by this gene is a secreted cytokine that is important for the proliferation of T and B lymphocytes. The receptor of this cytokine is a heterotrimeric protein complex whose gamma chain is also shared by interleukin 4 (IL4) and interleukin 7 (IL7). The expression of this gene in mature thymocytes is monoallelic, which represents an unusual regulatory mode for controlling the precise expression of a single gene. The targeted disruption of a similar gene in mice leads to ulcerative colitis-like disease, which suggests an essential role of this gene in the immune response to antigenic stimuli. [provided by RefSeq, Jul 2008],
<b>Function :</b>	disease:A chromosomal aberration involving IL2 is found in a form of T-cell acute lymphoblastic leukemia (T-ALL). Translocation t(4;16)(q26;p13) with involves TNFRSF17.,function:Produced by T-cells in response to antigenic or mitogenic stimulation, this protein is required for T-cell proliferation and other activities crucial to regulation of the immune response. Can stimulate B-cells, monocytes, lymphokine-activated killer cells, natural killer cells, and glioma cells.,online information:Interleukin-2 entry,online information:The Singapore human mutation and polymorphism database,pharmaceutical:Available under the name Proleukin (Chiron). Used in patients with renal cell carcinoma or metastatic melanoma.,similarity:Belongs to the IL-2 family.,
<b>Subcellular Location :</b>	Secreted.
<b>Expression :</b>	Blood,PCR rescued clones,Placenta,Spleen,

---

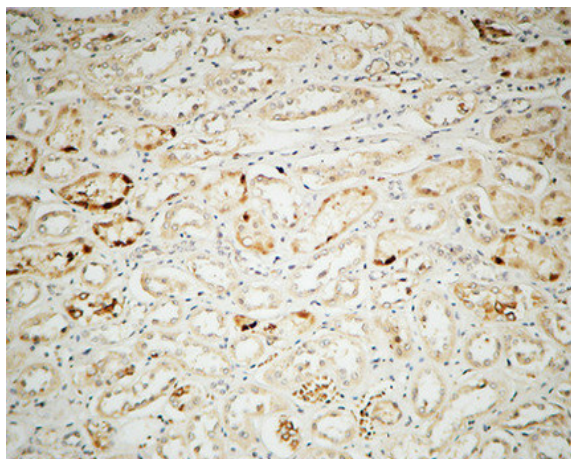
## Products Images



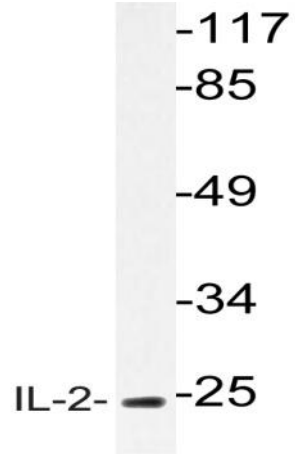
Immunofluorescence analysis of A549. 1,primary Antibody(red) was diluted at 1:200(4°C overnight). 2, Goat Anti Rabbit IgG (H&L) - Alexa Fluor 594 Secondary antibody was diluted at 1:1000(room temperature, 50min).3, Picture B: DAPI(blue) 10min.



Western Blot analysis of various cells using IL-2 Polyclonal Antibody



Immunohistochemical analysis of paraffin-embedded Human kidney. 1, Antibody was diluted at 1:100(4° overnight). 2, High-pressure and temperature EDTA, pH8.0 was used for antigen retrieval. 3,Secondary antibody was diluted at 1:200(room temperature, 30min).



Western blot analysis of lysate from HT-29 cells, using IL-2 antibody.