

**IRX1 Polyclonal Antibody**

<b>Catalog No :</b>	YT2412
<b>Reactivity :</b>	Human;Mouse
<b>Applications :</b>	WB;IHC;IF;ELISA
<b>Target :</b>	IRX1
<b>Gene Name :</b>	IRX1
<b>Protein Name :</b>	Iroquois-class homeodomain protein IRX-1
<b>Human Gene Id :</b>	79192
<b>Human Swiss Prot No :</b>	P78414
<b>Mouse Gene Id :</b>	16371
<b>Mouse Swiss Prot No :</b>	P81068
<b>Immunogen :</b>	The antiserum was produced against synthesized peptide derived from human IRX1. AA range:221-270
<b>Specificity :</b>	IRX1 Polyclonal Antibody detects endogenous levels of IRX1 protein.
<b>Formulation :</b>	Liquid in PBS containing 50% glycerol, 0.5% BSA and 0.02% sodium azide.
<b>Source :</b>	Polyclonal, Rabbit,IgG
<b>Dilution :</b>	WB 1:500 - 1:2000. IHC 1:100 - 1:300. IF 1:200 - 1:1000. ELISA: 1:40000. Not yet tested in other applications.
<b>Purification :</b>	The antibody was affinity-purified from rabbit antiserum by affinity-chromatography using epitope-specific immunogen.
<b>Concentration :</b>	1 mg/ml
<b>Storage Stability :</b>	-15°C to -25°C/1 year(Do not lower than -25°C)

**Observed Band :** 47kD

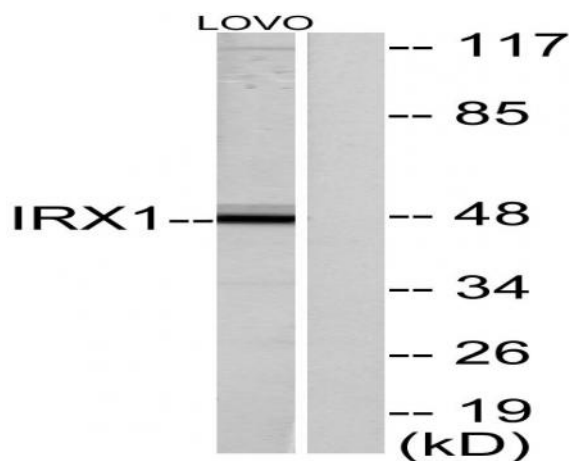
**Background :** This gene encodes a member of the Iroquois homeobox protein family. Homeobox genes in this family are involved in pattern formation in the embryo. The gene product has been identified as a tumor suppressor in gastric (PMID: 21602894, 20440264) and head and neck cancers (PMID: 18559491). A pseudogene of this gene is located on chromosome 13. [provided by RefSeq, Dec 2011],

**Function :** similarity:Belongs to the TALE/IRO homeobox family.,similarity:Contains 1 homeobox DNA-binding domain.,

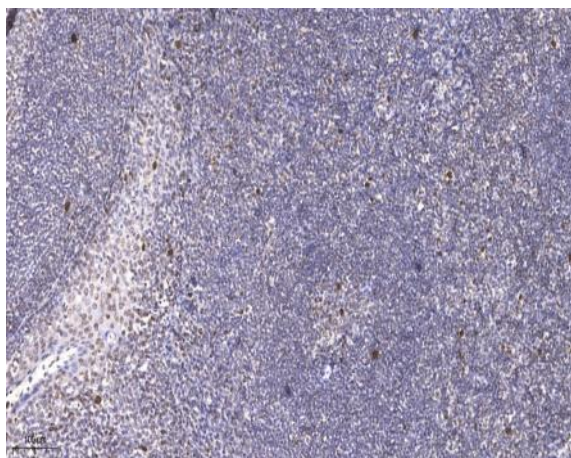
**Subcellular Location :** Nucleus .

**Expression :** Brain,Lung,

## Products Images



Western blot analysis of lysates from LOVO cells, using IRX1 Antibody. The lane on the right is blocked with the synthesized peptide.



Immunohistochemical analysis of paraffin-embedded human tonsil. 1, Antibody was diluted at 1:200(4° overnight). 2, Tris-EDTA,pH9.0 was used for antigen retrieval. 3,Secondary antibody was diluted at 1:200(room temperature, 45min).