

## IRX3 Polyclonal Antibody

<b>Catalog No :</b>	YT2414
<b>Reactivity :</b>	Human;Mouse
<b>Applications :</b>	IHC;IF;ELISA
<b>Target :</b>	IRX3
<b>Gene Name :</b>	IRX3
<b>Protein Name :</b>	Iroquois-class homeodomain protein IRX-3
<b>Human Gene Id :</b>	79191
<b>Human Swiss Prot No :</b>	P78415
<b>Mouse Gene Id :</b>	16373
<b>Mouse Swiss Prot No :</b>	P81067
<b>Immunogen :</b>	The antiserum was produced against synthesized peptide derived from human IRX3. AA range:271-320
<b>Specificity :</b>	IRX3 Polyclonal Antibody detects endogenous levels of IRX3 protein.
<b>Formulation :</b>	Liquid in PBS containing 50% glycerol, 0.5% BSA and 0.02% sodium azide.
<b>Source :</b>	Polyclonal, Rabbit,IgG
<b>Dilution :</b>	IHC 1:100 - 1:300. ELISA: 1:20000.. IF 1:50-200
<b>Purification :</b>	The antibody was affinity-purified from rabbit antiserum by affinity-chromatography using epitope-specific immunogen.
<b>Concentration :</b>	1 mg/ml
<b>Storage Stability :</b>	-15°C to -25°C/1 year(Do not lower than -25°C)

**Molecularweight :** 52kD

---

**Background :** IRX3 is a member of the Iroquois homeobox gene family (see IRX1; MIM 606197) and plays a role in an early step of neural development (Bellefroid et al., 1998 [PubMed 9427753]). Members of this family appear to play multiple roles during pattern formation of vertebrate embryos (Lewis et al., 1999 [PubMed 10370142]).[supplied by OMIM, Aug 2009],

---

**Function :** similarity:Belongs to the TALE/IRO homeobox family.,similarity:Contains 1 homeobox DNA-binding domain.,

---

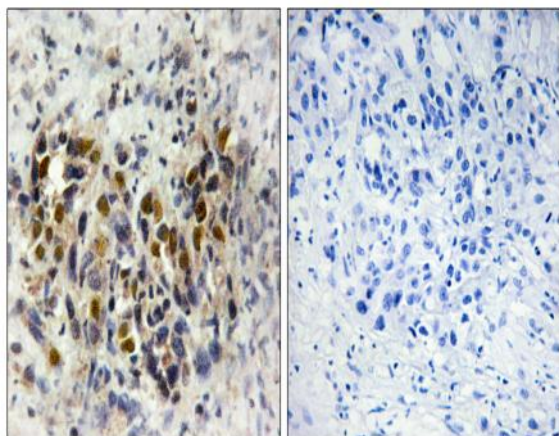
**Subcellular Location :** Nucleus .

---

**Expression :** Muscle,Skin,

---

## Products Images



Immunohistochemistry analysis of paraffin-embedded human breast carcinoma tissue, using IRX3 Antibody. The picture on the right is blocked with the synthesized peptide.