

JIP-2 Polyclonal Antibody

Catalog No :	YT2435
Reactivity :	Human;Mouse;Rat
Applications :	WB;IHC;IF;ELISA
Target :	JIP-2
Fields :	>>MAPK signaling pathway
Gene Name :	MAPK8IP2
Protein Name :	C-Jun-amino-terminal kinase-interacting protein 2
Human Gene Id :	23542
Human Swiss Prot No :	Q13387
Mouse Gene Id :	60597
Mouse Swiss Prot No :	Q9ERE9
Immunogen :	The antiserum was produced against synthesized peptide derived from human JIP2. AA range:581-630
Specificity :	JIP-2 Polyclonal Antibody detects endogenous levels of JIP-2 protein.
Formulation :	Liquid in PBS containing 50% glycerol, 0.5% BSA and 0.02% sodium azide.
Source :	Polyclonal, Rabbit,IgG
Dilution :	WB 1:500 - 1:2000. IHC 1:100 - 1:300. IF 1:200 - 1:1000. ELISA: 1:20000. Not yet tested in other applications.
Purification :	The antibody was affinity-purified from rabbit antiserum by affinity-chromatography using epitope-specific immunogen.
Concentration :	1 mg/ml

Storage Stability : -15°C to -25°C/1 year(Do not lower than -25°C)

Observed Band : 87kD

Cell Pathway : MAPK_ERK_Growth;MAPK_G_Protein;

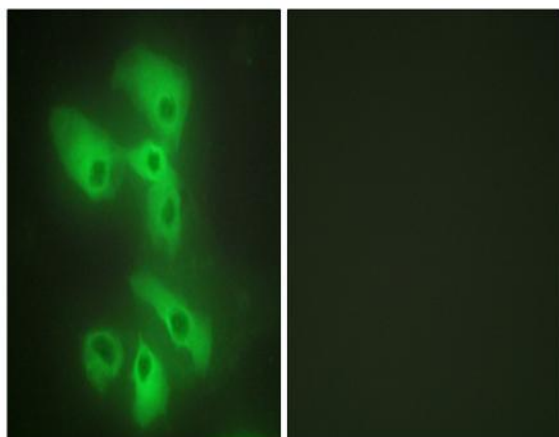
Background : The protein encoded by this gene is closely related to MAPK8IP1/IB1/JIP-1, a scaffold protein that is involved in the c-Jun amino-terminal kinase signaling pathway. This protein is expressed in brain and pancreatic cells. It has been shown to interact with, and regulate the activity of MAPK8/JNK1, and MAP2K7/MKK7 kinases. This protein thus is thought to function as a regulator of signal transduction by protein kinase cascade in brain and pancreatic beta-cells. [provided by RefSeq, Feb 2014],

Function : alternative products:Experimental confirmation may be lacking for some isoforms,function:The JNK-interacting protein (JIP) group of scaffold proteins selectively mediates JNK signaling by aggregating specific components of the MAPK cascade to form a functional JNK signaling module. JIP2 inhibits IL1 beta-induced apoptosis in insulin-secreting cells. May function as a regulator of vesicle transport, through interactions with the JNK-signaling components and motor proteins.,similarity:Belongs to the JIP scaffold family.,similarity:Contains 1 PID domain.,similarity:Contains 1 SH3 domain.,subcellular location:Accumulates in cell surface projections.,subunit:Forms homo- or heterooligomeric complexes. Binds specific components of the JNK signaling pathway namely JNK, MAPKK7 and MLK2, MLK3 and DLK. Also binds the proline-rich domain-containing splice variant of apolipoprotein E receptor 2 (ApoER

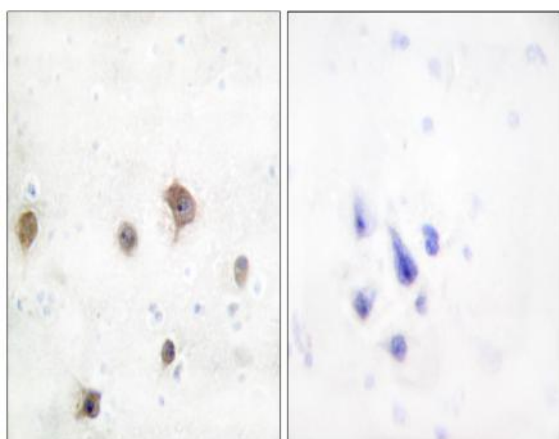
Subcellular Location : Cytoplasm . Accumulates in cell surface projections. .

Expression : Expressed mainly in the brain and pancreas, including insulin-secreting cells. In the nervous system, more abundantly expressed in the cerebellum, pituitary gland, occipital lobe and the amygdala. Also expressed in fetal brain. Very low levels found in uterus, ovary, prostate, colon, testis, adrenal gland, thyroid gland and salivary gland.

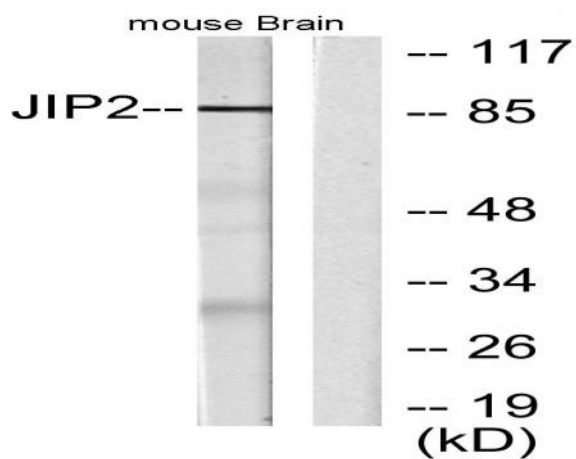
Products Images



Immunofluorescence analysis of HeLa cells, using JIP2 Antibody. The picture on the right is blocked with the synthesized peptide.



Immunohistochemistry analysis of paraffin-embedded human brain tissue, using JIP2 Antibody. The picture on the right is blocked with the synthesized peptide.



Western blot analysis of lysates from mouse brain, using JIP2 Antibody. The lane on the right is blocked with the synthesized peptide.