

JNK1/2/3 Polyclonal Antibody

Catalog No :	YT2440
Reactivity :	Human;Mouse;Rat;Chicken(testedbyyourcustomer?);Fish;Pig
Applications :	WB;IHC;IF;ELISA
Target :	JNK1/2/3
Fields :	>>Endocrine resistance;>>MAPK signaling pathway;>>ErbB signaling pathway;>>Ras signaling pathway;>>cAMP signaling pathway;>>FoxO signaling pathway;>>Sphingolipid signaling pathway;>>Mitophagy - animal;>>Autophagy - animal;>>Protein processing in endoplasmic reticulum;>>Apoptosis;>>Apoptosis - multiple species;>>Necroptosis;>>Wnt signaling pathway;>>Osteoclast differentiation;>>Focal adhesion;>>Tight junction;>>Toll-like receptor signaling pathway;>>NOD-like receptor signaling pathway;>>RIG-I-like receptor signaling pathway;>>C-type lectin receptor signaling pathway;>>IL-17 signaling pathway;>>Th1 and Th2 cell differentiation;>>Th17 cell differentiation;>>T cell receptor signaling pathway;>>Fc epsilon RI signaling pathway;>>TNF signaling pathway;>>Neurotrophin signaling pathway;>>Retrograde endocannabinoid signaling;>>Dopaminergic synapse;>>Inflammatory mediator regulation of TRP channels;>>Insulin signaling pathway;>>GnRH signaling pathway;>>Progesterone-mediated oocyte maturation;>>Pr
Gene Name :	MAPK8/9/10
Protein Name :	Mitogen-activated protein kinase 8/9/10
Human Gene Id :	5599/5601/5602
Human Swiss Prot No :	P45983/P45984/P53779
Mouse Gene Id :	26419/26420
Rat Gene Id :	116554/50658/25272
Rat Swiss Prot No :	P49185/P49186/P49187
Immunogen :	The antiserum was produced against synthesized peptide derived from human SAPK/JNK. AA range:166-215

Specificity :	JNK1/2/3 Polyclonal Antibody detects endogenous levels of JNK1/2/3 protein.
Formulation :	Liquid in PBS containing 50% glycerol, 0.5% BSA and 0.02% sodium azide.
Source :	Polyclonal, Rabbit,IgG
Dilution :	WB 1:500 - 1:2000. IHC 1:100 - 1:300. IF 1:200 - 1:1000. ELISA: 1:10000. Not yet tested in other applications.
Purification :	The antibody was affinity-purified from rabbit antiserum by affinity-chromatography using epitope-specific immunogen.
Concentration :	1 mg/ml
Storage Stability :	-15°C to -25°C/1 year(Do not lower than -25°C)
Observed Band :	46kD,54kD
Cell Pathway :	Toll_Like; Cell Growth; Stem cell pathway; Insulin Receptor; MAPK_ERK_Growth;MAPK_G_Protein; ErbB/HER; B Cell Receptor; SAPK_JNK; WNT;WNT-T CELL;β-Catenin
Background :	<p>The protein encoded by this gene is a member of the MAP kinase family. MAP kinases act as an integration point for multiple biochemical signals, and are involved in a wide variety of cellular processes such as proliferation, differentiation, transcription regulation and development. This kinase is activated by various cell stimuli, and targets specific transcription factors, and thus mediates immediate-early gene expression in response to cell stimuli. The activation of this kinase by tumor-necrosis factor alpha (TNF-alpha) is found to be required for TNF-alpha induced apoptosis. This kinase is also involved in UV radiation induced apoptosis, which is thought to be related to cytochrom c-mediated cell death pathway. Studies of the mouse counterpart of this gene suggested that this kinase play a key role in T cell proliferation, apoptosis and differentiation. Several alternatively spl</p>
Function :	<p>catalytic activity:ATP + a protein = ADP + a phosphoprotein.,cofactor:Magnesium.,domain:The TXY motif contains the threonine and tyrosine residues whose phosphorylation activates the MAP kinases.,enzyme regulation:Activated by threonine and tyrosine phosphorylation by either of two dual specificity kinases, MAP2K4 and MAP2K7. Inhibited by dual specificity phosphatases, such as DUSP1.,function:JNK1 isoforms display different binding patterns: beta-1 preferentially binds to c-Jun, whereas alpha-1, alpha-2, and beta-2 have a similar low level of binding to both c-Jun or ATF2. However, there is no correlation between binding and phosphorylation, which is achieved at about the same efficiency by all isoforms.,function:Responds to activation by environmental stress and pro-inflammatory cytokines by phosphorylating a number of transcription factors, primarily components of AP-1</p>

such as JUN, JDP

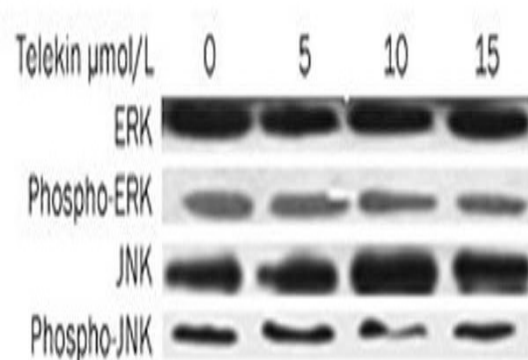
Subcellular Location :

Cytoplasm . Nucleus . Cell junction, synapse . In the cortical neurons, predominantly cytoplasmic and associated with the Golgi apparatus and endosomal fraction. Increased neuronal activity increases phosphorylated form at synapses (By similarity). Colocalizes with POU5F1 in the nucleus. .

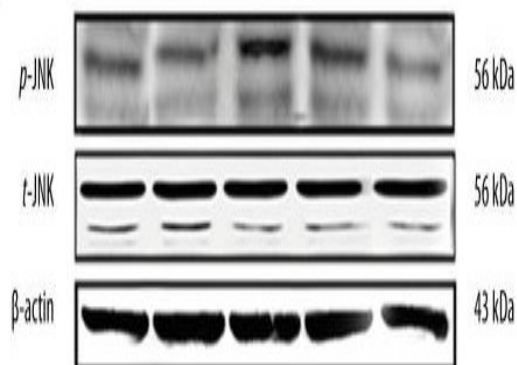
Expression :

Brain,Epithelium,Fetal brain,Lung,Pooled,Testis,

Products Images

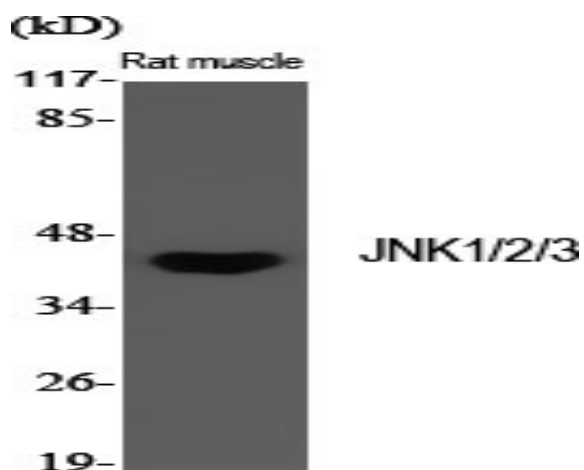
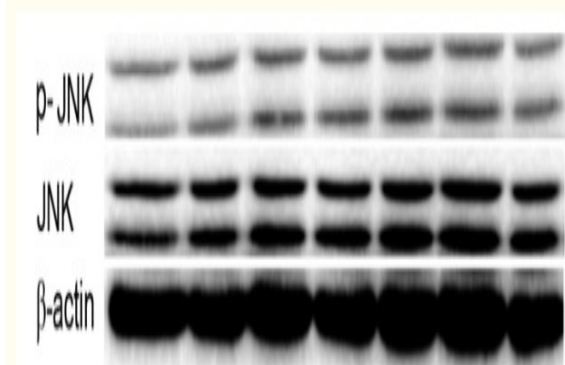


Li, Lin, et al. "Telekin suppresses human hepatocellular carcinoma cells in vitro by inducing G 2/M phase arrest via the p38 MAPK signaling pathway." *Acta Pharmacologica Sinica* 35.10 (2014): 1311.

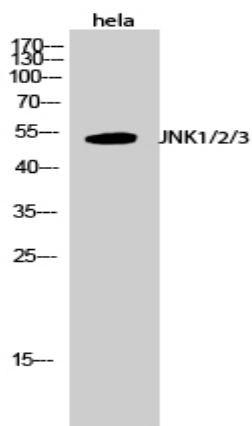


Fan, Dong-xiao, et al. "17 β -Estradiol on the Expression of G-Protein Coupled Estrogen Receptor (GPER/GPR30) Mitophagy, and the PI3K/Akt Signaling Pathway in ATDC5 Chondrocytes In Vitro." *Medical science monitor: international medical journal of experimental and clinical research* 24 (2018): 1936.

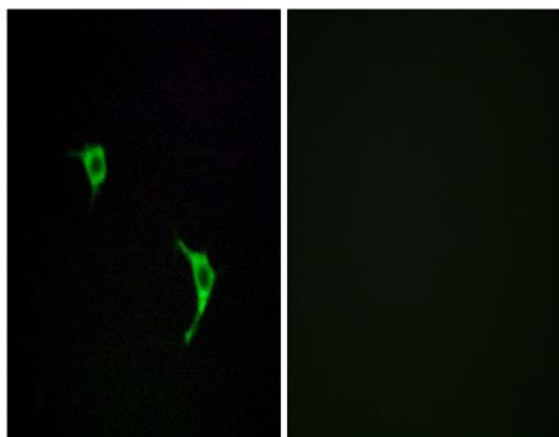
Xu, Yini, et al. "Inhibitory effects of oxymatrine on TGF- β 1-induced proliferation and abnormal differentiation in rat cardiac fibroblasts via the p38MAPK and ERK1/2 signaling pathways." *Molecular medicine reports* 16.4 (2017): 5354-5362.



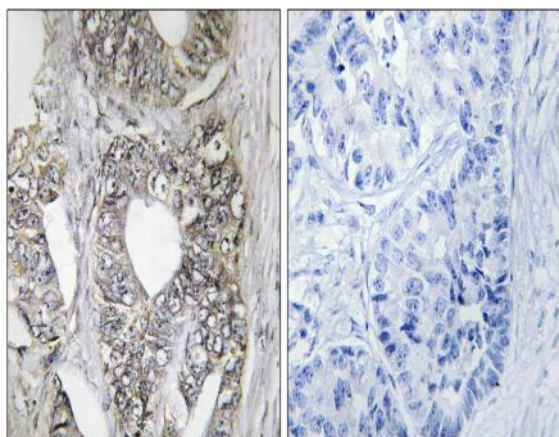
Western Blot analysis of various cells using JNK1/2/3 Polyclonal Antibody diluted at 1:1000



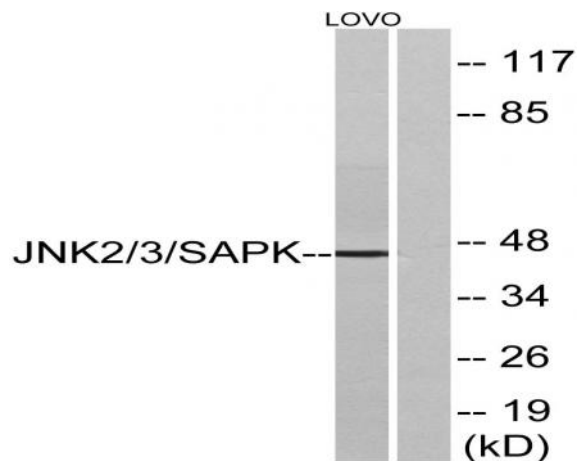
Western Blot analysis of hela cells using JNK1/2/3 Polyclonal Antibody diluted at 1:1000



Immunofluorescence analysis of LOVO cells, using SAPK/JNK Antibody. The picture on the right is blocked with the synthesized peptide.



Immunohistochemistry analysis of paraffin-embedded human breast carcinoma tissue, using SAPK/JNK Antibody. The picture on the right is blocked with the synthesized peptide.



Western blot analysis of lysates from LOVO cells, using SAPK/JNK Antibody. The lane on the right is blocked with the synthesized peptide.