

Keratin 37/38 Polyclonal Antibody

Catalog No :	YT2465
Reactivity :	Human;Rat;Mouse;
Applications :	WB;ELISA;IHC
Target :	Keratin 37/38
Fields :	>>Estrogen signaling pathway;>>Staphylococcus aureus infection
Gene Name :	KRT37/KRT38
Protein Name :	Keratin type I cuticular Ha7/Keratin type I cuticular Ha8
Human Gene Id :	8688
Human Swiss Prot No :	O76014/O76015
Immunogen :	The antiserum was produced against synthesized peptide derived from human KRT37/38. AA range:201-250
Specificity :	Keratin 37/38 Polyclonal Antibody detects endogenous levels of Keratin 37/38 protein.
Formulation :	Liquid in PBS containing 50% glycerol, 0.5% BSA and 0.02% sodium azide.
Source :	Polyclonal, Rabbit,IgG
Dilution :	WB 1:500-2000;IHC 1:50-300; ELISA 2000-20000
Purification :	The antibody was affinity-purified from rabbit antiserum by affinity-chromatography using epitope-specific immunogen.
Concentration :	1 mg/ml
Storage Stability :	-15°C to -25°C/1 year(Do not lower than -25°C)
Observed Band :	50kD

Background :

The protein encoded by this gene is a member of the keratin gene family. As a type I hair keratin, it is an acidic protein which heterodimerizes with type II keratins to form hair and nails. The type I hair keratins are clustered in a region of chromosome 17q12-q21 and have the same direction of transcription. [provided by RefSeq, Jul 2008],

Function :

miscellaneous:There are two types of hair/microfibrillar keratin, I (acidic) and II (neutral to basic).,similarity:Belongs to the intermediate filament family.,

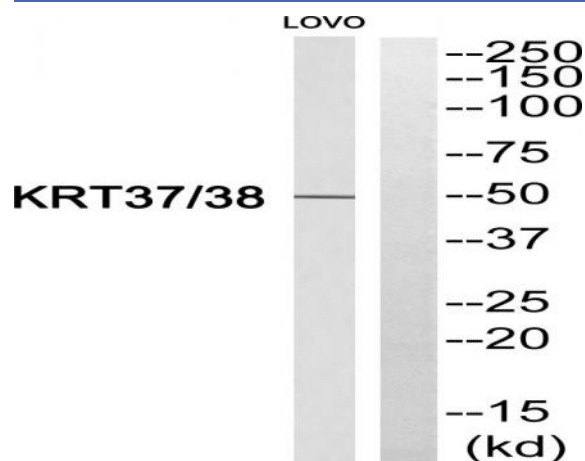
Subcellular Location :

intermediate filament,extracellular exosome,

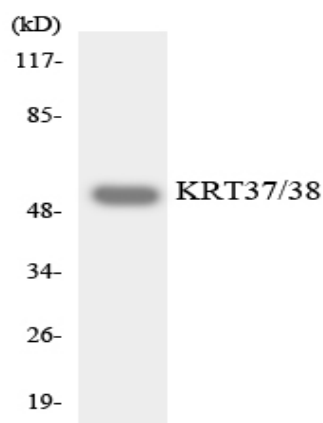
Expression :

Scalp,

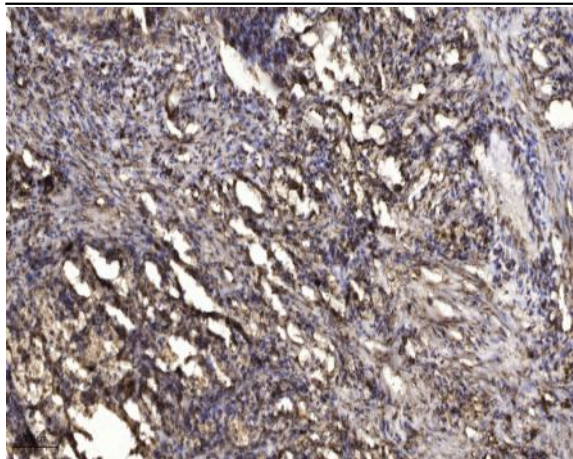
Products Images



Western blot analysis of KRT37/38 Antibody. The lane on the right is blocked with the KRT37/38 peptide.



Western blot analysis of the lysates from HepG2 cells using KRT37/38 antibody.



Immunohistochemical analysis of paraffin-embedded human Squamous cell carcinoma of lung. 1, Antibody was diluted at 1:200(4° overnight). 2, Tris-EDTA,pH9.0 was used for antigen retrieval. 3,Secondary antibody was diluted at 1:200(room temperature, 45min).