

## Id4 Polyclonal Antibody

|                              |   |
|------------------------------|---|
| <b>Catalog No :</b>          | YT2272  |
| <b>Reactivity :</b>          | Human;Mouse;Rat   |
| <b>Applications :</b>        | WB;IHC;IF;ELISA   |
| <b>Target :</b>              | Id4   |
| <b>Fields :</b>              | >>TGF-beta signaling pathway;>>Signaling pathways regulating pluripotency of stem cells                               |
| <b>Gene Name :</b>           | ID4   |
| <b>Protein Name :</b>        | DNA-binding protein inhibitor ID-4  |
| <b>Human Gene Id :</b>       | 3400  |
| <b>Human Swiss Prot No :</b> | P47928  |
| <b>Mouse Gene Id :</b>       | 15904   |
| <b>Mouse Swiss Prot No :</b> | P41139  |
| <b>Immunogen :</b>           | The antiserum was produced against synthesized peptide derived from human ID4. AA range:1-50                          |
| <b>Specificity :</b>         | Id4 Polyclonal Antibody detects endogenous levels of Id4 protein.   |
| <b>Formulation :</b>         | Liquid in PBS containing 50% glycerol, 0.5% BSA and 0.02% sodium azide.   |
| <b>Source :</b>              | Polyclonal, Rabbit,IgG  |
| <b>Dilution :</b>            | WB 1:500 - 1:2000. IHC 1:100 - 1:300. ELISA: 1:20000.. IF 1:50-200  |
| <b>Purification :</b>        | The antibody was affinity-purified from rabbit antiserum by affinity-chromatography using epitope-specific immunogen. |
| <b>Concentration :</b>       | 1 mg/ml   |

**Storage Stability :** -15°C to -25°C/1 year(Do not lower than -25°C)

**Observed Band :** 24kD

**Cell Pathway :** TGF-beta;

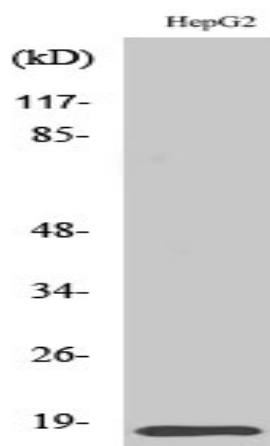
**Background :** This gene encodes a member of the inhibitor of DNA binding (ID) protein family. These proteins are basic helix-loop-helix transcription factors which can act as tumor suppressors but lack DNA binding activity. Consequently, the activity of the encoded protein depends on the protein binding partner. [provided by RefSeq, Dec 2011],

**Function :** function:ID (inhibitor of DNA binding) HLH proteins lack a basic DNA-binding domain but are able to form heterodimers with other HLH proteins, thereby inhibiting DNA binding.,similarity:Contains 1 basic helix-loop-helix (bHLH) domain.,subunit:Heterodimer with other HLH proteins.,

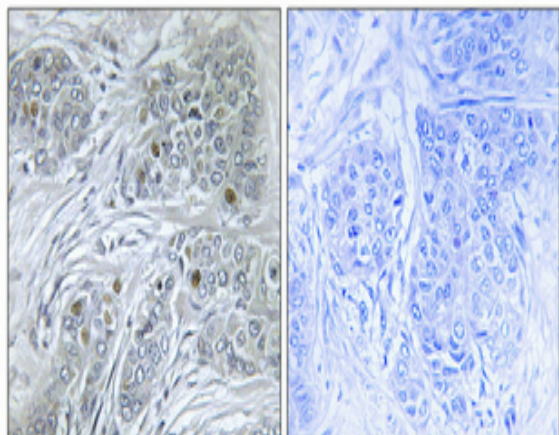
**Subcellular Location :** Nucleus.

**Expression :** Abdominal adipose tissue,Uterus,

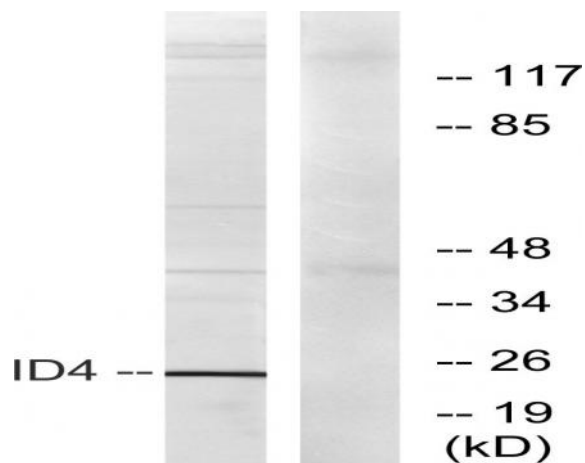
## Products Images



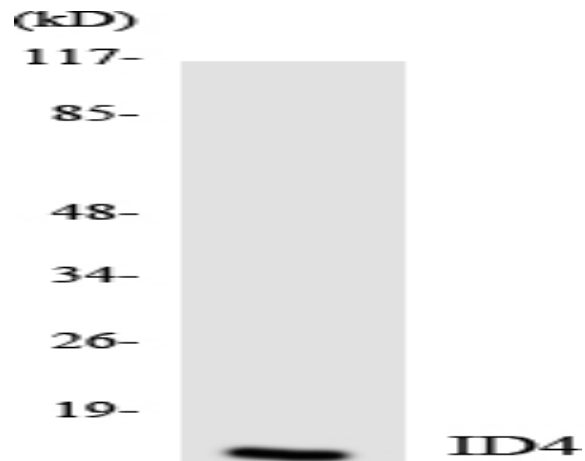
Western Blot analysis of various cells using Id4 Polyclonal Antibody diluted at 1:500 cells nucleus extracted by Minute TM Cytoplasmic and Nuclear Fractionation kit (SC-003, Inventibiotech, MN, USA).



Immunohistochemical analysis of paraffin-embedded Human breast cancer. Antibody was diluted at 1:100(4° overnight). High-pressure and temperature Tris-EDTA,pH8.0 was used for antigen retrieval. Negative contrl (right) obtained from antibody was pre-absorbed by immunogen peptide.



Western blot analysis of lysates from HepG2 cells, using ID4 Antibody. The lane on the right is blocked with the synthesized peptide.



Western blot analysis of the lysates from HeLa cells using ID4 antibody.