

## IGSF4D Polyclonal Antibody

<b>Catalog No :</b>	YT2296
<b>Reactivity :</b>	Human;Mouse;Rat
<b>Applications :</b>	WB;IHC;IF;ELISA
<b>Target :</b>	IGSF4D
<b>Gene Name :</b>	CADM2
<b>Protein Name :</b>	Cell adhesion molecule 2
<b>Human Gene Id :</b>	253559
<b>Human Swiss Prot No :</b>	Q8N3J6
<b>Mouse Gene Id :</b>	239857
<b>Mouse Swiss Prot No :</b>	Q8BLQ9
<b>Rat Gene Id :</b>	360687
<b>Rat Swiss Prot No :</b>	Q1WIM2
<b>Immunogen :</b>	The antiserum was produced against synthesized peptide derived from human CADM2. AA range:131-180
<b>Specificity :</b>	IGSF4D Polyclonal Antibody detects endogenous levels of IGSF4D protein.
<b>Formulation :</b>	Liquid in PBS containing 50% glycerol, 0.5% BSA and 0.02% sodium azide.
<b>Source :</b>	Polyclonal, Rabbit,IgG
<b>Dilution :</b>	WB 1:500 - 1:2000. IHC 1:100 - 1:300. IF 1:200 - 1:1000. ELISA: 1:10000. Not yet tested in other applications.
<b>Purification :</b>	The antibody was affinity-purified from rabbit antiserum by affinity-chromatography using epitope-specific immunogen.

**Concentration :** 1 mg/ml

**Storage Stability :** -15°C to -25°C/1 year(Do not lower than -25°C)

**Observed Band :** 47kD

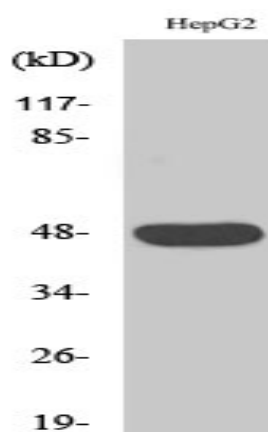
**Background :** cell adhesion molecule 2(CADM2) Homo sapiens This gene encodes a member of the synaptic cell adhesion molecule 1 (SynCAM) family which belongs to the immunoglobulin (Ig) superfamily. The encoded protein has three Ig-like domains and a cytosolic protein 4.1 binding site near the C-terminus. Proteins belonging to the protein 4.1 family crosslink spectrin and interact with other cytoskeletal proteins. Multiple transcript variants encoding different isoforms have been found for this gene. [provided by RefSeq, Feb 2012],

**Function :** similarity:Belongs to the nectin family.,similarity:Contains 1 Ig-like V-type (immunoglobulin-like) domain.,similarity:Contains 2 Ig-like C2-type (immunoglobulin-like) domains.,

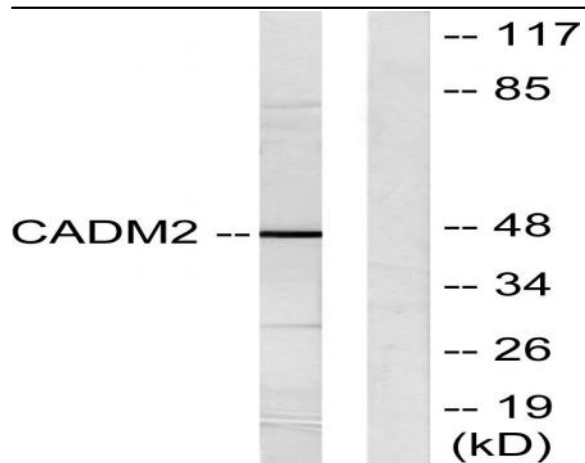
**Subcellular Location :** Cell membrane ; Single-pass type I membrane protein . Cell junction, synapse . Cell projection, axon . Found in the axoplasm of myelinated axons.

**Expression :** Amygdala,Brain,Stomach,

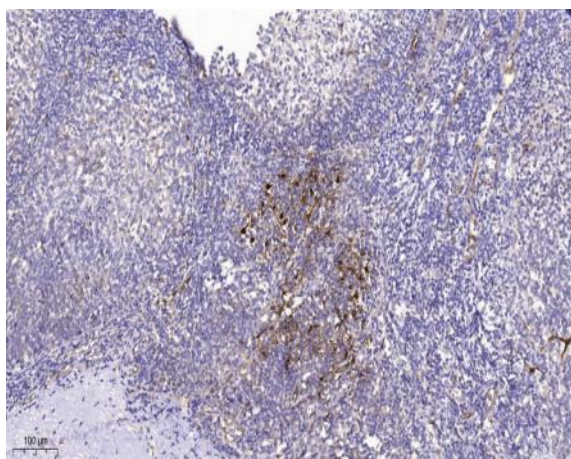
## Products Images



Western Blot analysis of various cells using IGSF4D Polyclonal Antibody



Western blot analysis of lysates from HepG2 cells, using CADM2 Antibody. The lane on the right is blocked with the synthesized peptide.



Immunohistochemical analysis of paraffin-embedded human tonsil. 1, Tris-EDTA, pH 9.0 was used for antigen retrieval. 2 Antibody was diluted at 1:200 (4° overnight). 3, Secondary antibody was diluted at 1:200 (room temperature, 45 min).