

## LT- $\beta$ Polyclonal Antibody

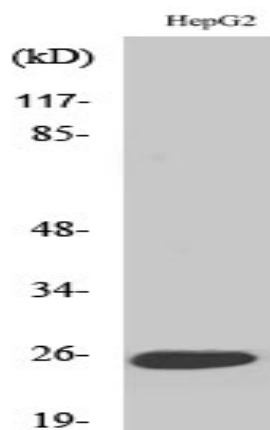
|                              |   |
|------------------------------|---|
| <b>Catalog No :</b>          | YT2601  |
| <b>Reactivity :</b>          | Human;Mouse   |
| <b>Applications :</b>        | WB;IF;ELISA   |
| <b>Target :</b>              | LT- $\beta$   |
| <b>Fields :</b>              | >>Cytokine-cytokine receptor interaction;>>NF-kappa B signaling pathway;>>Rheumatoid arthritis                        |
| <b>Gene Name :</b>           | LTB   |
| <b>Protein Name :</b>        | Lymphotoxin-beta  |
| <b>Human Gene Id :</b>       | 4050  |
| <b>Human Swiss Prot No :</b> | Q06643  |
| <b>Mouse Gene Id :</b>       | 16994   |
| <b>Mouse Swiss Prot No :</b> | P41155  |
| <b>Immunogen :</b>           | The antiserum was produced against synthesized peptide derived from human TNFC. AA range:181-230                      |
| <b>Specificity :</b>         | LT- $\beta$ Polyclonal Antibody detects endogenous levels of LT- $\beta$ protein.                                     |
| <b>Formulation :</b>         | Liquid in PBS containing 50% glycerol, 0.5% BSA and 0.02% sodium azide.   |
| <b>Source :</b>              | Polyclonal, Rabbit,IgG  |
| <b>Dilution :</b>            | WB 1:500 - 1:2000. IF 1:200 - 1:1000. ELISA: 1:10000. Not yet tested in other applications.                           |
| <b>Purification :</b>        | The antibody was affinity-purified from rabbit antiserum by affinity-chromatography using epitope-specific immunogen. |

---

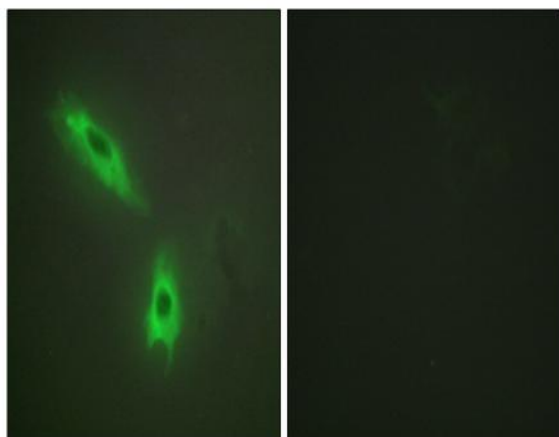
|                               |   |
|-------------------------------|---|
| <b>Concentration :</b>        | 1 mg/ml   |
| <b>Storage Stability :</b>    | -15°C to -25°C/1 year(Do not lower than -25°C)  |
| <b>Observed Band :</b>        | 22kD  |
| <b>Cell Pathway :</b>         | Cytokine-cytokine receptor interaction;   |
| <b>Background :</b>           | Lymphotoxin beta is a type II membrane protein of the TNF family. It anchors lymphotoxin-alpha to the cell surface through heterotrimer formation. The predominant form on the lymphocyte surface is the lymphotoxin-alpha 1/beta 2 complex (e.g. 1 molecule alpha/2 molecules beta) and this complex is the primary ligand for the lymphotoxin-beta receptor. The minor complex is lymphotoxin-alpha 2/beta 1. LTB is an inducer of the inflammatory response system and involved in normal development of lymphoid tissue. Lymphotoxin-beta isoform b is unable to complex with lymphotoxin-alpha suggesting a function for lymphotoxin-beta which is independent of lymphotoxin-alpha. Alternative splicing results in multiple transcript variants encoding different isoforms. [provided by RefSeq, Jul 2008], |
| <b>Function :</b>             | function:Cytokine that binds to LTBR/TNFRSF3. May play a specific role in immune response regulation. Provides the membrane anchor for the attachment of the heterotrimeric complex to the cell surface. Isoform 2 is probably non-functional.,similarity:Belongs to the tumor necrosis factor family.,subunit:Heterotrimer of either two LTB and one LTA subunits or (less prevalent) one LTB and two LTA subunits.,tissue specificity:Spleen and thymus.,   |
| <b>Subcellular Location :</b> | Membrane ; Single-pass type II membrane protein .   |
| <b>Expression :</b>           | Spleen and thymus.  |

---

## Products Images



Western Blot analysis of various cells using LT- $\beta$  Polyclonal Antibody



Immunofluorescence analysis of HeLa cells, using TNFC Antibody. The picture on the right is blocked with the synthesized peptide.

