

## IL-20 Polyclonal Antibody

<b>Catalog No :</b>	YT2324
<b>Reactivity :</b>	Human;Mouse
<b>Applications :</b>	WB;ELISA
<b>Target :</b>	IL-20
<b>Fields :</b>	>>Cytokine-cytokine receptor interaction;>>Viral protein interaction with cytokine and cytokine receptor;>>JAK-STAT signaling pathway
<b>Gene Name :</b>	IL20
<b>Protein Name :</b>	Interleukin-20
<b>Human Gene Id :</b>	50604
<b>Human Swiss Prot No :</b>	Q9NYY1
<b>Mouse Gene Id :</b>	58181
<b>Mouse Swiss Prot No :</b>	Q9JKV9
<b>Immunogen :</b>	The antiserum was produced against synthesized peptide derived from human IL-20. AA range:12-61
<b>Specificity :</b>	IL-20 Polyclonal Antibody detects endogenous levels of IL-20 protein.
<b>Formulation :</b>	Liquid in PBS containing 50% glycerol, 0.5% BSA and 0.02% sodium azide.
<b>Source :</b>	Polyclonal, Rabbit,IgG
<b>Dilution :</b>	WB 1:500 - 1:2000. ELISA: 1:5000. Not yet tested in other applications.
<b>Purification :</b>	The antibody was affinity-purified from rabbit antiserum by affinity-chromatography using epitope-specific immunogen.
<b>Concentration :</b>	1 mg/ml

**Storage Stability :** -15°C to -25°C/1 year(Do not lower than -25°C)

**Observed Band :** 28kD

**Cell Pathway :** Cytokine-cytokine receptor interaction;Jak\_STAT;

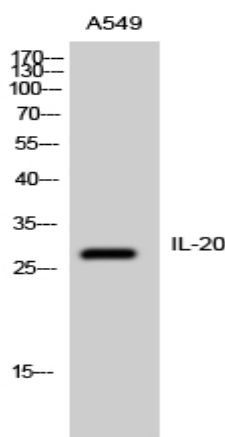
**Background :** The protein encoded by this gene is a cytokine structurally related to interleukin 10 (IL10). This cytokine has been shown to transduce its signal through signal transducer and activator of transcription 3 (STAT3) in keratinocytes. A specific receptor for this cytokine is found to be expressed in skin and upregulated dramatically in psoriatic skin, suggesting a role for this protein in epidermal function and psoriasis. [provided by RefSeq, Jul 2008],

**Function :** function:Cytokine that may be involved in epidermal function and psoriasis. Acts through STAT3.,similarity:Belongs to the IL-10 family.,tissue specificity:Expressed at very low levels in skin, trachea, and other tissues.,

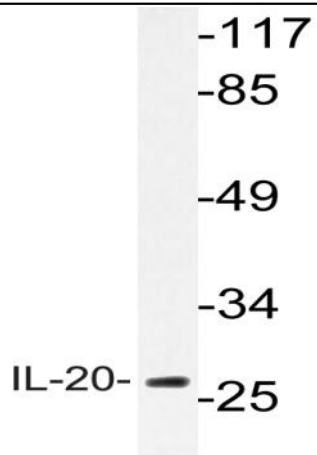
**Subcellular Location :** Secreted.

**Expression :** Expressed in most tissues and five major cell types: epithelial cells (primarily skin, buccal mucosa, tongue, nasal mucosa, lung, ureter, breast, prostate, fallopian tube, and adrenal gland), myoepithelial cells (mainly prostate), endothelial cells (mainly in small vessels or capillaries), macrophages, and skeletal muscle. Isoform 2 was detected in the lung tissue only.

## Products Images



Western Blot analysis of A549 cells using IL-20 Polyclonal Antibody



Western blot analysis of lysate from A549 cells, using IL-20 antibody.