

## IL-20R $\alpha$ Polyclonal Antibody

<b>Catalog No :</b>	YT2325
<b>Reactivity :</b>	Human;Mouse
<b>Applications :</b>	WB;IHC;IF;ELISA
<b>Target :</b>	IL-20R $\alpha$
<b>Fields :</b>	>>Cytokine-cytokine receptor interaction;>>Viral protein interaction with cytokine and cytokine receptor;>>JAK-STAT signaling pathway
<b>Gene Name :</b>	IL20RA
<b>Protein Name :</b>	Interleukin-20 receptor subunit alpha
<b>Human Gene Id :</b>	53832
<b>Human Swiss Prot No :</b>	Q9UHF4
<b>Mouse Swiss Prot No :</b>	Q6PHB0
<b>Immunogen :</b>	The antiserum was produced against synthesized peptide derived from human IL-20R $\alpha$ . AA range:173-222
<b>Specificity :</b>	IL-20R $\alpha$ Polyclonal Antibody detects endogenous levels of IL-20R $\alpha$ protein.
<b>Formulation :</b>	Liquid in PBS containing 50% glycerol, 0.5% BSA and 0.02% sodium azide.
<b>Source :</b>	Polyclonal, Rabbit,IgG
<b>Dilution :</b>	WB 1:500 - 1:2000. IHC 1:100 - 1:300. ELISA: 1:40000.. IF 1:50-200
<b>Purification :</b>	The antibody was affinity-purified from rabbit antiserum by affinity-chromatography using epitope-specific immunogen.
<b>Concentration :</b>	1 mg/ml
<b>Storage Stability :</b>	-15°C to -25°C/1 year(Do not lower than -25°C)

**Observed Band :** 62kD

**Cell Pathway :** Cytokine-cytokine receptor interaction;Jak\_STAT;

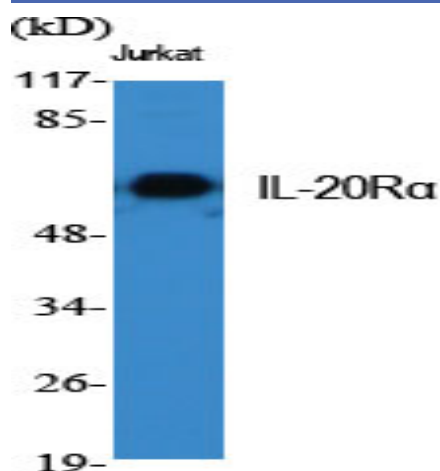
**Background :** This gene encodes a member of the type II cytokine receptor family. The encoded protein is a subunit of the receptor for interleukin 20, a cytokine that may be involved in epidermal function. The interleukin 20 receptor is a heterodimeric complex consisting of the encoded protein and interleukin 20 receptor beta. This gene and interleukin 20 receptor beta are highly expressed in skin, and are upregulated in psoriasis. Alternative splicing results in multiple transcript variants. [provided by RefSeq, Jul 2013],

**Function :** function:The IL20RA/IL20RB dimer is a receptor for IL19, IL20 and IL24. The IL20RA/IL10RB dimer is a receptor for IL26.,similarity:Belongs to the type II cytokine receptor family.,similarity:Contains 2 fibronectin type-III domains.,subunit:Heterodimer with IL20RB and heterodimer with IL10RB.,tissue specificity:Widely expressed with highest levels in skin and testis and high levels in brain. Highly expressed in psoriatic skin.,

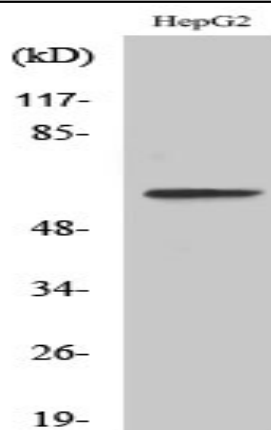
**Subcellular Location :** Membrane ; Single-pass type I membrane protein .

**Expression :** Widely expressed with highest levels in skin and testis and high levels in brain. Highly expressed in psoriatic skin.

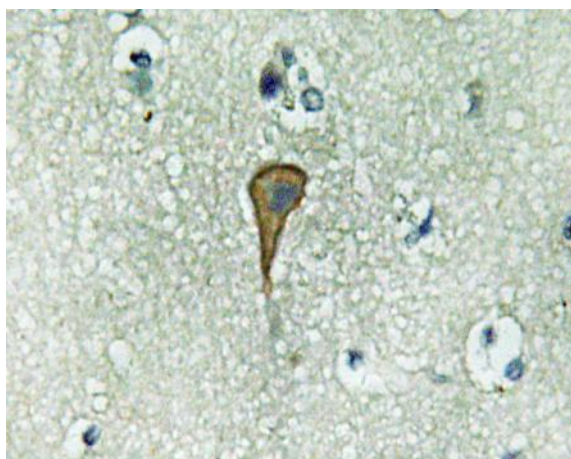
## Products Images



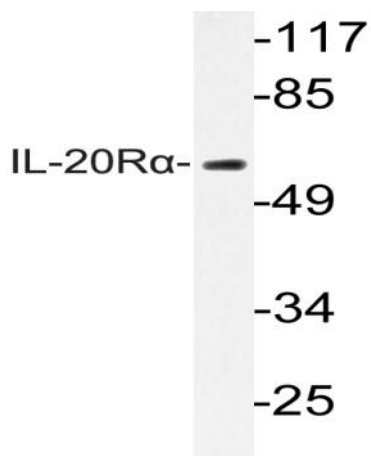
Western Blot analysis of various cells using IL-20Ra Polyclonal Antibody



Western Blot analysis of LOVO cells using IL-20Ra Polyclonal Antibody



Immunohistochemistry analysis of IL-20Ra antibody in paraffin-embedded human brain tissue.



Western blot analysis of lysate from HepG2 cells, using IL-20Ra antibody.