

## Intestinal Cell Kinase Polyclonal Antibody

<b>Catalog No :</b>	YT2375
<b>Reactivity :</b>	Human;Mouse;Rat
<b>Applications :</b>	WB;IHC;IF;ELISA
<b>Target :</b>	Intestinal Cell Kinase
<b>Gene Name :</b>	ICK
<b>Protein Name :</b>	Serine/threonine-protein kinase ICK
<b>Human Gene Id :</b>	22858
<b>Human Swiss Prot No :</b>	Q9UPZ9
<b>Mouse Gene Id :</b>	56542
<b>Mouse Swiss Prot No :</b>	Q9JKV2
<b>Rat Gene Id :</b>	84411
<b>Rat Swiss Prot No :</b>	Q62726
<b>Immunogen :</b>	The antiserum was produced against synthesized peptide derived from human ICK. AA range:125-174
<b>Specificity :</b>	Intestinal Cell Kinase Polyclonal Antibody detects endogenous levels of Intestinal Cell Kinase protein.
<b>Formulation :</b>	Liquid in PBS containing 50% glycerol, 0.5% BSA and 0.02% sodium azide.
<b>Source :</b>	Polyclonal, Rabbit,IgG
<b>Dilution :</b>	WB 1:500 - 1:2000. IHC 1:100 - 1:300. ELISA: 1:20000.. IF 1:50-200
<b>Purification :</b>	The antibody was affinity-purified from rabbit antiserum by affinity-chromatography using epitope-specific immunogen.

**Concentration :** 1 mg/ml

---

**Storage Stability :** -15°C to -25°C/1 year(Do not lower than -25°C)

---

**Observed Band :** 65kD

---

**Background :** Eukaryotic protein kinases are enzymes that belong to a very extensive family of proteins which share a conserved catalytic core common with both serine/threonine and tyrosine protein kinases. This gene encodes an intestinal serine/threonine kinase harboring a dual phosphorylation site found in mitogen-activating protein (MAP) kinases. The protein localizes to the intestinal crypt region and is thought to be important in intestinal epithelial cell proliferation and differentiation. Alternative splicing has been observed at this locus and two variants, encoding the same isoform, have been identified. [provided by RefSeq, Jul 2008],

---

**Function :** catalytic activity:ATP + a protein = ADP + a phosphoprotein.,cofactor:Magnesium.,disease:Defects in ICK are the cause of endocrine-cerebroostodysplasia (ECO) [MIM:612651]. ECO is a previously unidentified neonatal lethal recessive disorder with multiple anomalies involving the endocrine, cerebral, and skeletal systems.,function:May play a key role in the development of multiple organ systems and particularly in cardiac development.,PTM:Autophosphorylated on serine and threonine residues. May play a role in enzyme activation.,similarity:Belongs to the protein kinase superfamily.,similarity:Belongs to the protein kinase superfamily. CMGC Ser/Thr protein kinase family. CDC2/CDKX subfamily.,similarity:Contains 1 protein kinase domain.,subcellular location:Nuclear localization has been observed with a GFP-tagged construct in transfected HeLa cells (PubMed:12103360). Cytosolic localization wa

---

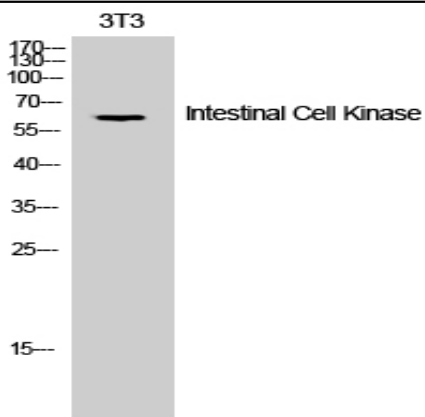
**Subcellular Location :** Nucleus . Cytoplasm, cytosol . Cell projection, cilium . Cytoplasm, cytoskeleton, cilium basal body . Also found at the ciliary tip (PubMed:24797473). Nuclear localization has been observed with a GFP-tagged construct in transfected HeLa cells (PubMed:12103360, PubMed:19185282). .; [Isoform 2]: Cytoplasm . Predominant cytoplasmic localization has been observed with a N-terminally GFP-tagged construct. .

---

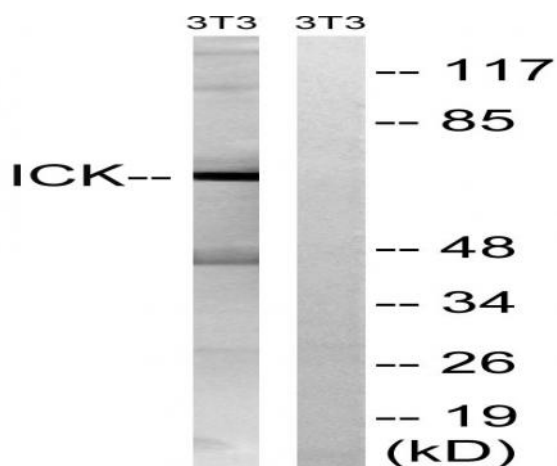
**Expression :** Expressed in heart, brain, placenta, pancreas, thymus, prostate, testis, ovary, small intestine and colon, with highest levels in placenta and testis. Not detected in spleen. Also expressed in many cancer cell lines.

---

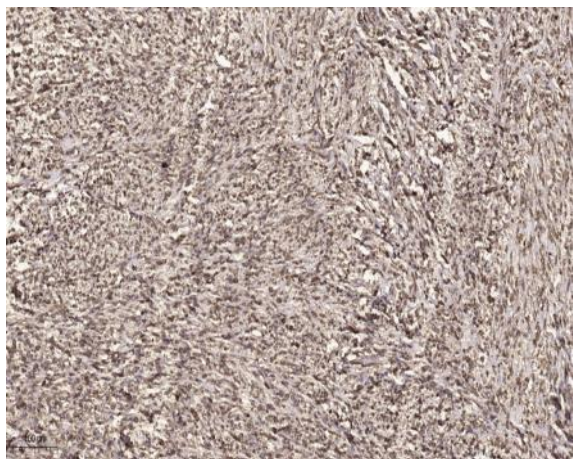
## Products Images



Western Blot analysis of 3T3 cells using Intestinal Cell Kinase Polyclonal Antibody



Western blot analysis of lysates from NIH/3T3 cells, treated with PBS 10uM 60', using ICK Antibody. The lane on the right is blocked with the synthesized peptide.



Immunohistochemical analysis of paraffin-embedded human small intestinal carcinoma tissue. 1, primary Antibody was diluted at 1:200 (4° overnight). 2, Sodium citrate pH 6.0 was used for antigen retrieval (>98° C, 20min). 3, Secondary antibody was diluted at 1:200