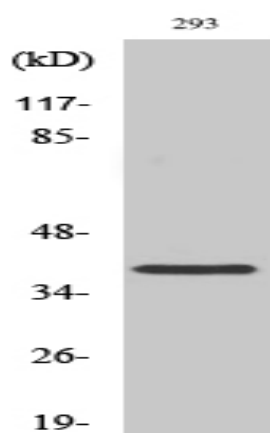


## Mos Polyclonal Antibody

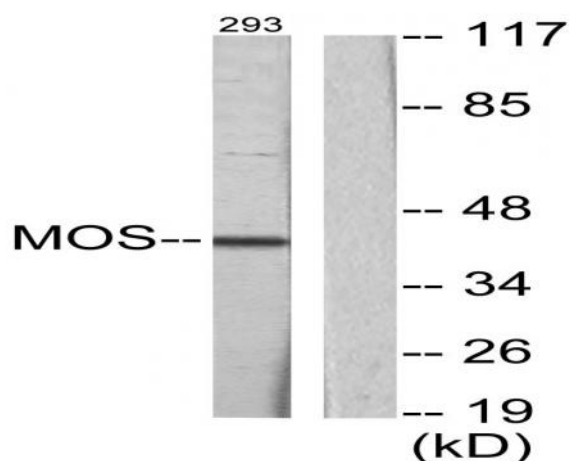
<b>Catalog No :</b>	YT2818
<b>Reactivity :</b>	Human;Rat;Mouse;
<b>Applications :</b>	WB;ELISA;IHC
<b>Target :</b>	Mos
<b>Fields :</b>	>>Oocyte meiosis;>>Regulation of actin cytoskeleton;>>Progesterone-mediated oocyte maturation
<b>Gene Name :</b>	MOS
<b>Protein Name :</b>	Proto-oncogene serine/threonine-protein kinase mos
<b>Human Gene Id :</b>	4342
<b>Human Swiss Prot No :</b>	P00540
<b>Mouse Swiss Prot No :</b>	P00536
<b>Immunogen :</b>	The antiserum was produced against synthesized peptide derived from human MOS. AA range:61-110
<b>Specificity :</b>	Mos Polyclonal Antibody detects endogenous levels of Mos protein.
<b>Formulation :</b>	Liquid in PBS containing 50% glycerol, 0.5% BSA and 0.02% sodium azide.
<b>Source :</b>	Polyclonal, Rabbit,IgG
<b>Dilution :</b>	WB 1:500-2000;IHC 1:50-300; ELISA 2000-20000
<b>Purification :</b>	The antibody was affinity-purified from rabbit antiserum by affinity-chromatography using epitope-specific immunogen.
<b>Concentration :</b>	1 mg/ml
<b>Storage Stability :</b>	-15°C to -25°C/1 year(Do not lower than -25°C)

<b>Observed Band :</b>	40kD
<b>Cell Pathway :</b>	Regulation of Actin Dynamics; MAPK_ERK_Growth;MAPK_G_Protein; Cell Growth
<b>Background :</b>	MOS is a serine/threonine kinase that activates the MAP kinase cascade through direct phosphorylation of the MAP kinase activator MEK (MAP2K1; MIM 176872) (Prasad et al., 2008 [PubMed 18246541]).[supplied by OMIM, Jul 2009],
<b>Function :</b>	catalytic activity:ATP + a protein = ADP + a phosphoprotein.,similarity:Belongs to the protein kinase superfamily. Ser/Thr protein kinase family.,similarity:Contains 1 protein kinase domain.,tissue specificity:Expressed specifically in testis during spermatogenesis.,
<b>Subcellular Location :</b>	intracellular,
<b>Expression :</b>	Expressed specifically in testis during spermatogenesis.

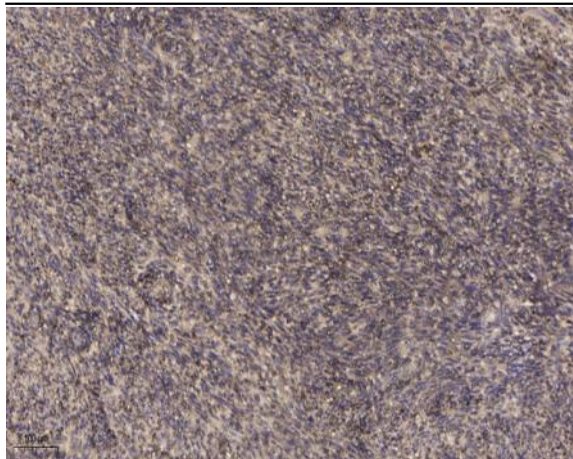
## Products Images



Western Blot analysis of various cells using Mos Polyclonal Antibody



Western blot analysis of lysates from 293 cells, using MOS Antibody. The lane on the right is blocked with the synthesized peptide.



Immunohistochemical analysis of paraffin-embedded human uterus. 1, Antibody was diluted at 1:200(4° overnight). 2, Tris-EDTA,pH9.0 was used for antigen retrieval. 3,Secondary antibody was diluted at 1:200(room temperature, 45min).