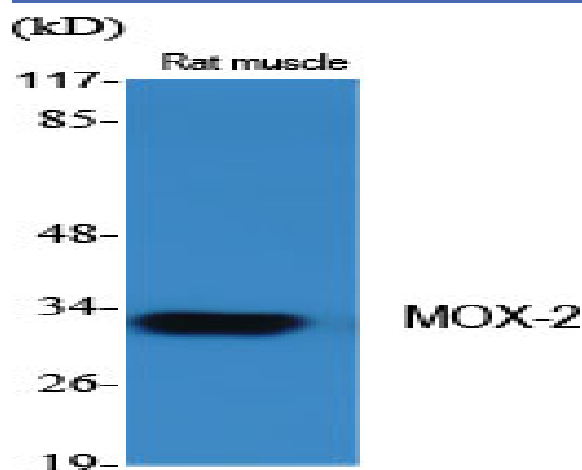


MOX-2 Polyclonal Antibody

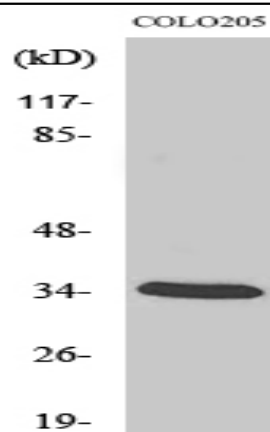
Catalog No :	YT2821
Reactivity :	Human;Mouse;Rat
Applications :	WB;IHC;IF;ELISA
Target :	MOX-2
Gene Name :	MEOX2
Protein Name :	Homeobox protein MOX-2
Human Gene Id :	4223
Human Swiss Prot No :	P50222
Mouse Gene Id :	17286
Mouse Swiss Prot No :	P32443
Rat Gene Id :	29279
Rat Swiss Prot No :	P39020
Immunogen :	The antiserum was produced against synthesized peptide derived from human MEOX2. AA range:151-200
Specificity :	MOX-2 Polyclonal Antibody detects endogenous levels of MOX-2 protein.
Formulation :	Liquid in PBS containing 50% glycerol, 0.5% BSA and 0.02% sodium azide.
Source :	Polyclonal, Rabbit,IgG
Dilution :	WB 1:500 - 1:2000. IHC 1:100 - 1:300. ELISA: 1:10000.. IF 1:50-200
Purification :	The antibody was affinity-purified from rabbit antiserum by affinity-chromatography using epitope-specific immunogen.

Concentration :	1 mg/ml
Storage Stability :	-15°C to -25°C/1 year(Do not lower than -25°C)
Observed Band :	33kD
Background :	This gene encodes a member of a subfamily of non-clustered, diverged, antennapedia-like homeobox-containing genes. The encoded protein may play a role in the regulation of vertebrate limb myogenesis. Mutations in the related mouse protein may be associated with craniofacial and/or skeletal abnormalities, in addition to neurovascular dysfunction observed in Alzheimer's disease. [provided by RefSeq, Jul 2008],
Function :	function:Role in mesoderm induction and its earliest regional specification, somitogenesis, and myogenic and sclerotomal differentiation. May have a regulatory role when quiescent vascular smooth muscle cells reenter the cell cycle.,polymorphism:The poly-His region of MOX2 is polymorphic and the number of His varies in the population.,similarity:Contains 1 homeobox DNA-binding domain.,subunit:Interacts with RNF10.,tissue specificity:Embryo and placenta.,
Subcellular Location :	Nucleus . Nucleus speckle .
Expression :	Embryo,Heart,Skin,

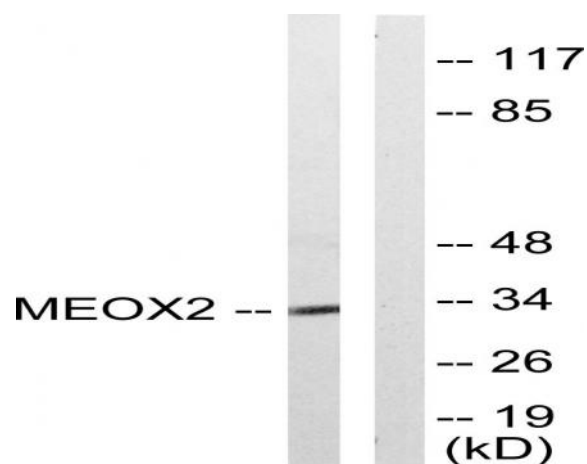
Products Images



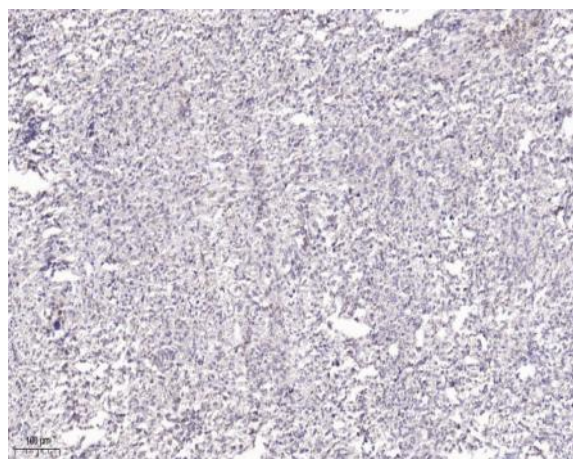
Western Blot analysis of various cells using MOX-2 Polyclonal Antibody diluted at 1:2000



Western Blot analysis of COLO205 cells using MOX-2 Polyclonal Antibody diluted at 1:2000



Western blot analysis of lysates from COLO205 cells, using MEOX2 Antibody. The lane on the right is blocked with the synthesized peptide.



Immunohistochemical analysis of paraffin-embedded human Small intestinal stromal tumor. 1, Tris-EDTA, pH9.0 was used for antigen retrieval. 2 Antibody was diluted at 1:200 (4° overnight). 3, Secondary antibody was diluted at 1:200 (room temperature, 45min).