

## IQGAP3 Polyclonal Antibody

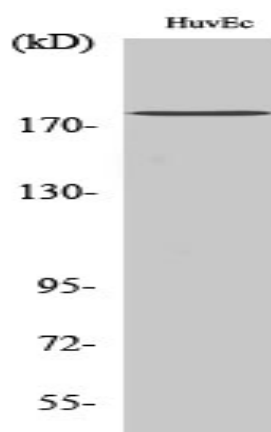
<b>Catalog No :</b>	YT2388
<b>Reactivity :</b>	Human;Mouse;Rat
<b>Applications :</b>	WB;ELISA;IHC
<b>Target :</b>	IQGAP3
<b>Fields :</b>	>>Regulation of actin cytoskeleton
<b>Gene Name :</b>	IQGAP3
<b>Protein Name :</b>	Ras GTPase-activating-like protein IQGAP3
<b>Human Gene Id :</b>	128239
<b>Human Swiss Prot No :</b>	Q86VI3
<b>Immunogen :</b>	The antiserum was produced against synthesized peptide derived from human IQGAP3. AA range:107-156
<b>Specificity :</b>	IQGAP3 Polyclonal Antibody detects endogenous levels of IQGAP3 protein.
<b>Formulation :</b>	Liquid in PBS containing 50% glycerol, 0.5% BSA and 0.02% sodium azide.
<b>Source :</b>	Polyclonal, Rabbit,IgG
<b>Dilution :</b>	WB 1:500-2000;IHC 1:50-300; ELISA 2000-20000
<b>Purification :</b>	The antibody was affinity-purified from rabbit antiserum by affinity-chromatography using epitope-specific immunogen.
<b>Concentration :</b>	1 mg/ml
<b>Storage Stability :</b>	-15°C to -25°C/1 year(Do not lower than -25°C)
<b>Observed Band :</b>	180kD

---

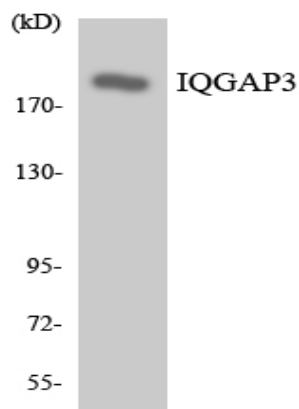
<b>Cell Pathway :</b>	Regulates Actin and Cytoskeleton;
<b>Background :</b>	similarity:Contains 1 CH (calponin-homology) domain.,similarity:Contains 1 Ras-GAP domain.,similarity:Contains 4 IQ domains.,
<b>Function :</b>	similarity:Contains 1 CH (calponin-homology) domain.,similarity:Contains 1 Ras-GAP domain.,similarity:Contains 4 IQ domains.,
<b>Subcellular Location :</b>	cytosol,cell-cell junction,lateral plasma membrane,
<b>Expression :</b>	Embryonic kidney,

---

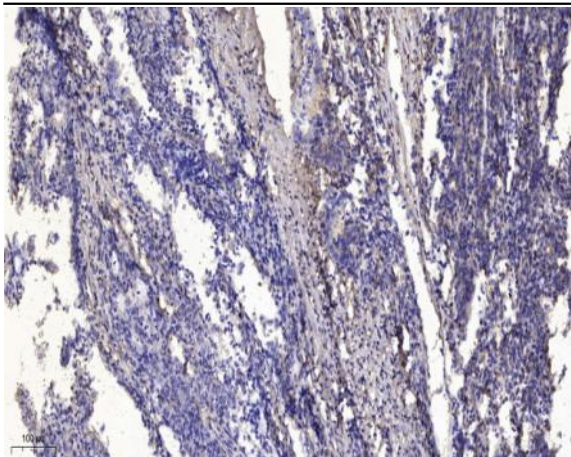
## Products Images



Western Blot analysis of various cells using IQGAP3 Polyclonal Antibody diluted at 1:1000



Western blot analysis of the lysates from 293 cells using IQGAP3 antibody.



Immunohistochemical analysis of paraffin-embedded human Gastric adenocarcinoma. 1, Antibody was diluted at 1:200(4° overnight). 2, Tris-EDTA,pH9.0 was used for antigen retrieval. 3,Secondary antibody was diluted at 1:200(room temperature, 45min).