

IRAK-2 Polyclonal Antibody

Catalog No :	YT2392
Reactivity :	Human;Rat;Mouse;
Applications :	WB;IHC
Target :	IRAK-2
Fields :	>>Neurotrophin signaling pathway;>>Tuberculosis
Gene Name :	IRAK2
Protein Name :	Interleukin-1 receptor-associated kinase-like 2
Human Gene Id :	3656
Human Swiss Prot No :	O43187
Mouse Swiss Prot No :	Q8CFA1
Immunogen :	Synthesized peptide derived from the Internal region of human IRAK-2.
Specificity :	IRAK-2 Polyclonal Antibody detects endogenous levels of IRAK-2 protein.
Formulation :	Liquid in PBS containing 50% glycerol, 0.5% BSA and 0.02% sodium azide.
Source :	Polyclonal, Rabbit,IgG
Dilution :	WB 1:500-2000;IHC 1:50-300
Purification :	The antibody was affinity-purified from rabbit antiserum by affinity-chromatography using epitope-specific immunogen.
Concentration :	1 mg/ml
Storage Stability :	-15°C to -25°C/1 year(Do not lower than -25°C)

Observed Band : 70kD

Cell Pathway :

Apoptosis_Inhibition;Apoptosis_Mitochondrial;Apoptosis_Overview;Neurotrophin;

Background :

IRAK2 encodes the interleukin-1 receptor-associated kinase 2, one of two putative serine/threonine kinases that become associated with the interleukin-1 receptor (IL1R) upon stimulation. IRAK2 is reported to participate in the IL1-induced upregulation of NF-kappaB. [provided by RefSeq, Jul 2008],

Function :

caution:Asn-335 is present instead of the conserved Asp which is expected to be an active site residue. This enzyme has been shown to be catalytically inactive.,domain:The protein kinase domain is predicted to be catalytically inactive.,function:Binds to the IL-1 type I receptor following IL-1 engagement, triggering intracellular signaling cascades leading to transcriptional up-regulation and mRNA stabilization.,similarity:Belongs to the protein kinase superfamily. TKL Ser/Thr protein kinase family. Pelle subfamily.,similarity:Contains 1 death domain.,similarity:Contains 1 protein kinase domain.,subunit:Interacts with MYD88. IL-1 stimulation leads to the formation of a signaling complex which dissociates from the IL-1 receptor following the binding of PELI1.,tissue specificity:Expressed in spleen, thymus, prostate, lung, liver, skeletal muscle, kidney, pancreas and peripheral blood leuko

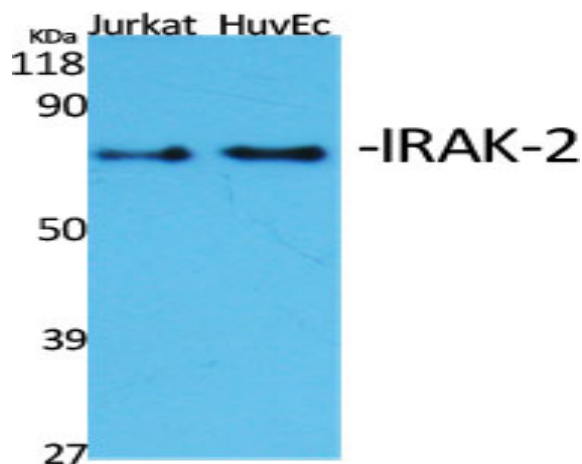
Subcellular Location :

nucleus,cytoplasm,cytosol,plasma membrane,endosome membrane,

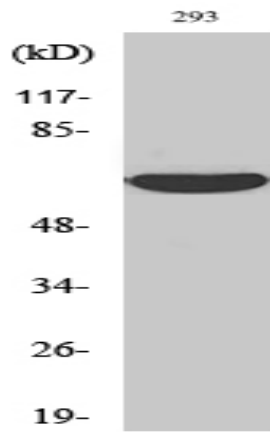
Expression :

Expressed in spleen, thymus, prostate, lung, liver, skeletal muscle, kidney, pancreas and peripheral blood leukocytes.

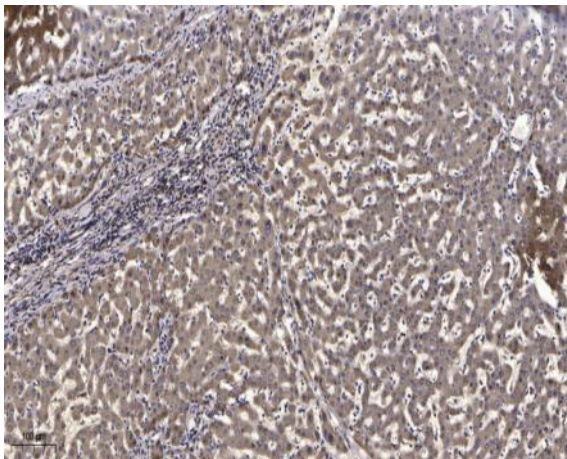
Products Images



Western Blot analysis of various cells using IRAK-2 Polyclonal Antibody diluted at 1:2000



Western Blot analysis of 293 cells using IRAK-2 Polyclonal Antibody diluted at 1:2000



Immunohistochemical analysis of paraffin-embedded human liver cancer. 1, Antibody was diluted at 1:200(4° overnight). 2, Tris-EDTA,pH9.0 was used for antigen retrieval. 3,Secondary antibody was diluted at 1:200(room temperature, 45min).