

I κ B- α Polyclonal Antibody

Catalog No :	YT2419
Reactivity :	Human;Mouse;Rat
Applications :	WB;IHC;IF;ELISA
Target :	I κ B- α
Fields :	>>cAMP signaling pathway;>>Chemokine signaling pathway;>>NF-kappa B signaling pathway;>>Apoptosis;>>Osteoclast differentiation;>>Toll-like receptor signaling pathway;>>NOD-like receptor signaling pathway;>>RIG-I-like receptor signaling pathway;>>Cytosolic DNA-sensing pathway;>>C-type lectin receptor signaling pathway;>>IL-17 signaling pathway;>>Th1 and Th2 cell differentiation;>>Th17 cell differentiation;>>T cell receptor signaling pathway;>>B cell receptor signaling pathway;>>TNF signaling pathway;>>Neurotrophin signaling pathway;>>Adipocytokine signaling pathway;>>Relaxin signaling pathway;>>Insulin resistance;>>Alcoholic liver disease;>>Epithelial cell signaling in Helicobacter pylori infection;>>Pathogenic Escherichia coli infection;>>Shigellosis;>>Salmonella infection;>>Legionellosis;>>Yersinia infection;>>Leishmaniasis;>>Chagas disease;>>Toxoplasmosis;>>Hepatitis C;>>Hepatitis B;>>Measles;>>Human cytomegalovirus infection;>>Influenza A;>>Human T-cell leukemia virus 1 infection;>>
Gene Name :	NFKBIA IKBA MAD3 NFKBI
Protein Name :	NF-kappa-B inhibitor alpha
Human Gene Id :	4792
Human Swiss Prot No :	P25963
Mouse Gene Id :	18035
Mouse Swiss Prot No :	Q9Z1E3
Rat Gene Id :	25493
Rat Swiss Prot No :	Q63746

Immunogen :	The antiserum was produced against synthesized peptide derived from human I κ B- α . AA range:15-64
Specificity :	I κ B- α Polyclonal Antibody detects endogenous levels of I κ B- α protein.
Formulation :	Liquid in PBS containing 50% glycerol, 0.5% BSA and 0.02% sodium azide.
Source :	Polyclonal, Rabbit,IgG
Dilution :	WB 1:500 - 1:2000. IHC 1:100 - 1:300. IF 1:200 - 1:1000. ELISA: 1:10000. Not yet tested in other applications.
Purification :	The antibody was affinity-purified from rabbit antiserum by affinity-chromatography using epitope-specific immunogen.
Concentration :	1 mg/ml
Storage Stability :	-15°C to -25°C/1 year(Do not lower than -25°C)
Observed Band :	about 40kd
Cell Pathway :	Chemokine;Apoptosis_Inhibition;Apoptosis_Mitochondrial;Apoptosis_Overview;Toll_Like;NOD-like receptor;RIG-I-like receptor;Cytosolic DNA-sensing pathway;T_Cell_Receptor;B_Cell_Antigen;Neurotrophin;Adip
Background :	This gene encodes a member of the NF-kappa-B inhibitor family, which contain multiple ankrin repeat domains. The encoded protein interacts with REL dimers to inhibit NF-kappa-B/REL complexes which are involved in inflammatory responses. The encoded protein moves between the cytoplasm and the nucleus via a nuclear localization signal and CRM1-mediated nuclear export. Mutations in this gene have been found in ectodermal dysplasia anhidrotic with T-cell immunodeficiency autosomal dominant disease. [provided by RefSeq, Aug 2011],
Function :	disease:Defects in NFKBIA are the cause of ectodermal dysplasia anhidrotic with T-cell immunodeficiency autosomal dominant (ADEDAID) [MIM:612132]. Ectodermal dysplasia defines a heterogeneous group of disorders due to abnormal development of two or more ectodermal structures. ADEDAID is an ectodermal dysplasia associated with decreased production of pro-inflammatory cytokines and certain interferons, rendering patients susceptible to infection.,function:Inhibits the activity of dimeric NF-kappa-B/REL complexes by trapping REL dimers in the cytoplasm through masking of their nuclear localization signals. On cellular stimulation by immune and proinflammatory responses, becomes phosphorylated promoting ubiquitination and degradation, enabling the dimeric RELA to translocate to the nucleus and activate transcription.,induction:Induced in adherent monocytes.,online information:NFKBIA mutation

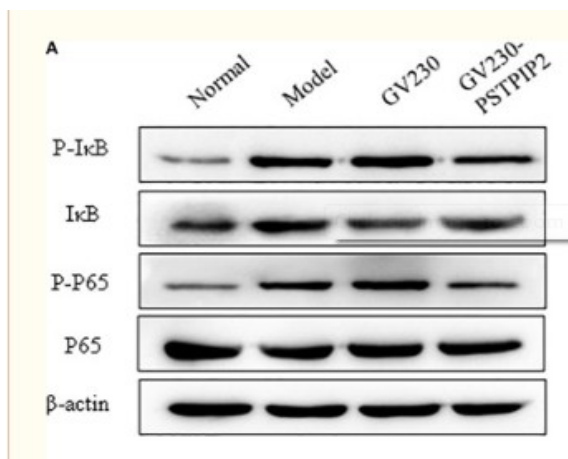
Subcellular Location :

Cytoplasm. Nucleus. Shuttles between the nucleus and the cytoplasm by a nuclear localization signal (NLS) and a CRM1-dependent nuclear export. .

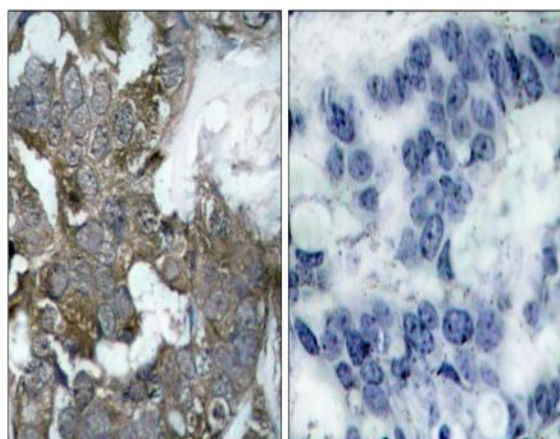
Expression :

Brain,Kidney,Lymph node,Monocyte,

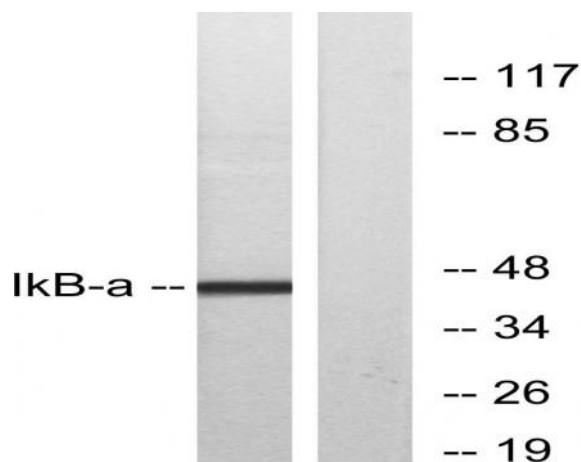
Products Images



Yao, Yao, et al. "PSTPIP2 inhibits the inflammatory response and proliferation of fibroblast-like synoviocytes in vitro." *Frontiers in pharmacology* 9 (2018): 1432.



Immunohistochemistry analysis of paraffin-embedded human breast carcinoma tissue, using IκappaB-alpha Antibody. The picture on the right is blocked with the synthesized peptide.



Western blot analysis of lysates from MCF7 cells, treated with TNF-α, using IκappaB-alpha Antibody. The lane on the right is blocked with the synthesized peptide.