

MEK-1/2 Polyclonal Antibody

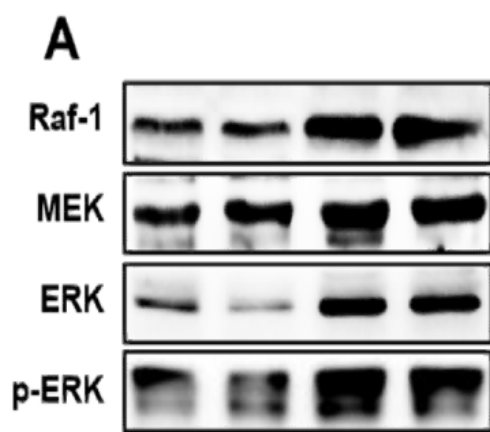
Catalog No :	YT2715
Reactivity :	Human;Mouse;Rat;Monkey
Applications :	IF;WB;IHC;ELISA
Target :	MEK-1/2
Fields :	>>EGFR tyrosine kinase inhibitor resistance;>>Endocrine resistance;>>MAPK signaling pathway;>>ErbB signaling pathway;>>Ras signaling pathway;>>Rap1 signaling pathway;>>cGMP-PKG signaling pathway;>>cAMP signaling pathway;>>Chemokine signaling pathway;>>HIF-1 signaling pathway;>>FoxO signaling pathway;>>Sphingolipid signaling pathway;>>Phospholipase D signaling pathway;>>Oocyte meiosis;>>Autophagy - animal;>>mTOR signaling pathway;>>PI3K-Akt signaling pathway;>>Apoptosis;>>Cellular senescence;>>Vascular smooth muscle contraction;>>VEGF signaling pathway;>>Apelin signaling pathway;>>Osteoclast differentiation;>>Focal adhesion;>>Gap junction;>>Signaling pathways regulating pluripotency of stem cells;>>Neutrophil extracellular trap formation;>>Toll-like receptor signaling pathway;>>Natural killer cell mediated cytotoxicity;>>T cell receptor signaling pathway;>>B cell receptor signaling pathway;>>Fc epsilon RI signaling pathway;>>Fc gamma R-mediated phagocytosis;>>TNF signaling pathway;>>Lon
Gene Name :	MAP2K1/MAP2K2
Protein Name :	Dual specificity mitogen-activated protein kinase kinase 1/2
Human Gene Id :	5604/5605
Human Swiss Prot No :	Q02750/P36507
Mouse Gene Id :	26395/26396
Rat Gene Id :	170851/58960
Rat Swiss Prot No :	Q01986/P36506
Immunogen :	The antiserum was produced against synthesized peptide derived from human MEK1/2. AA range:189-238

Specificity :	<u>MEK-1/2 Polyclonal Antibody detects endogenous levels of MEK-1/2 protein.</u>
Formulation :	<u>Liquid in PBS containing 50% glycerol, 0.5% BSA and 0.02% sodium azide.</u>
Source :	<u>Polyclonal, Rabbit,IgG</u>
Dilution :	<u>IF 1:50-200 WB 1:500-2000, ELISA 1:10000-20000 IHC 1:50-300</u>
Purification :	<u>The antibody was affinity-purified from rabbit antiserum by affinity-chromatography using epitope-specific immunogen.</u>
Concentration :	<u>1 mg/ml</u>
Storage Stability :	<u>-15°C to -25°C/1 year(Do not lower than -25°C)</u>
Observed Band :	<u>43kD</u>
Cell Pathway :	<u>Regulates Angiogenesis; Regulation of Actin Dynamics; Stem cell pathway; T_Cell_Receptor; Cell Growth; Insulin Receptor; Toll_Like; MAPK_ERK_Growth;MAPK_G_Protein; ErbB/HER; B_Cell_Antigen; PI3K/Akt</u>
Background :	<u>The protein encoded by this gene is a member of the dual specificity protein kinase family, which acts as a mitogen-activated protein (MAP) kinase kinase. MAP kinases, also known as extracellular signal-regulated kinases (ERKs), act as an integration point for multiple biochemical signals. This protein kinase lies upstream of MAP kinases and stimulates the enzymatic activity of MAP kinases upon wide variety of extra- and intracellular signals. As an essential component of MAP kinase signal transduction pathway, this kinase is involved in many cellular processes such as proliferation, differentiation, transcription regulation and development. [provided by RefSeq, Jul 2008],</u>
Function :	<u>catalytic activity:ATP + a protein = ADP + a phosphoprotein.,disease:Defects in MAP2K1 are a cause of cardiofaciocutaneous syndrome (CFC syndrome) [MIM:115150]; also known as cardio-facio-cutaneous syndrome. CFC syndrome is characterized by a distinctive facial appearance, heart defects and mental retardation. Heart defects include pulmonic stenosis, atrial septal defects and hypertrophic cardiomyopathy. Some affected individuals present with ectodermal abnormalities such as sparse, friable hair, hyperkeratotic skin lesions and a generalized ichthyosis-like condition. Typical facial features are similar to Noonan syndrome. They include high forehead with bitemporal constriction, hypoplastic supraorbital ridges, downslanting palpebral fissures, a depressed nasal bridge, and posteriorly angulated ears with prominent helices. The inheritance of CFC syndrome is autosomal dominant.,enzyme reg</u>
Subcellular Location :	<u>Cytoplasm, cytoskeleton, microtubule organizing center, centrosome . Cytoplasm, cytoskeleton, microtubule organizing center, spindle pole body .</u>

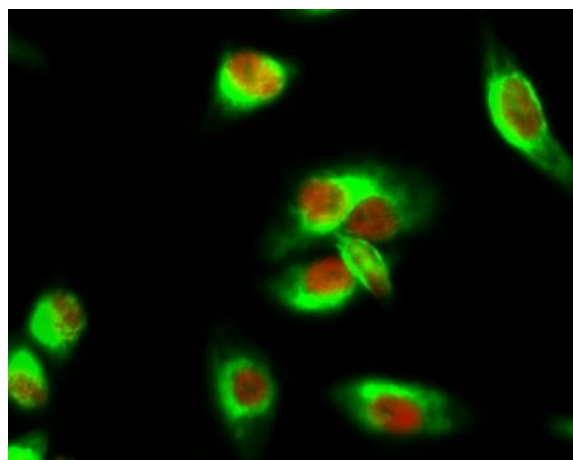
Cytoplasm . Nucleus . Membrane ; Peripheral membrane protein . Localizes at centrosomes during prometaphase, midzone during anaphase and midbody during telophase/cytokinesis (PubMed:14737111). Membrane localization is probably regulated by its interaction with KSR1 (PubMed:10409742). .

Expression : Widely expressed, with extremely low levels in brain.

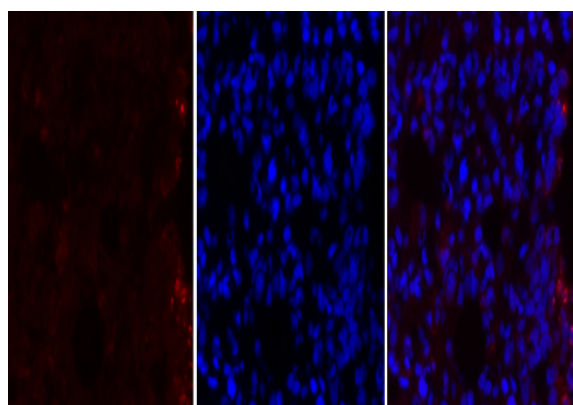
Products Images



Ambient NO₂ hinders neutrophil extracellular trap formation in rats: Assessment of the role of neutrophil autophagy. Fang Xiao
WB Rat 1:1000 neutrophils



Immunofluorescence analysis of HeLa cell. 1, MEK-1/2 Polyclonal Antibody (red) was diluted at 1:200 (4° overnight). CY5 Monoclonal Antibody (4B10) (green) was diluted at 1:200 (4° overnight). 2, Goat Anti Rabbit Alexa Fluor 594 Catalog: RS3611 was diluted at 1:1000 (room temperature, 50min). Goat Anti Mouse Alexa Fluor 488 Catalog: RS3208 was diluted at 1:1000 (room temperature, 50min).

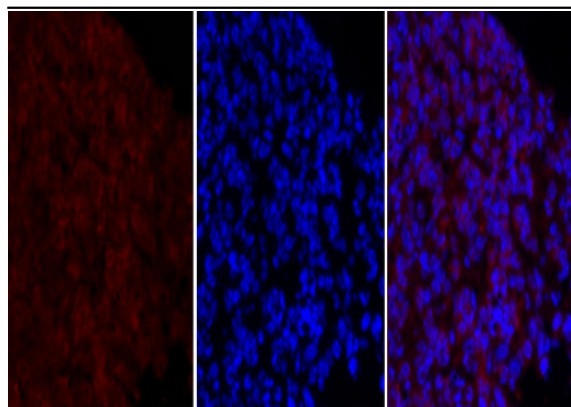


Immunofluorescence analysis of rat-lung tissue. 1, MEK-1/2 Polyclonal Antibody (red) was diluted at 1:200 (4° C, overnight). 2, Cy3 labeled Secondary antibody was diluted at 1:300 (room temperature, 50min). 3, Picture B: DAPI (blue) 10min. Picture A: Target. Picture B: DAPI. Picture C: merge of A+B

A

B

C

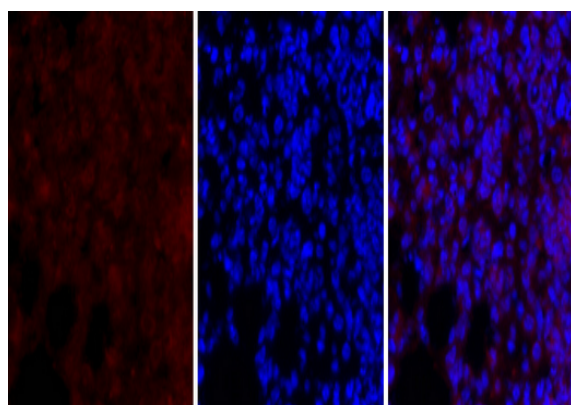


A

B

C

Immunofluorescence analysis of mouse-lung tissue. 1,MEK-1/2 Polyclonal Antibody(red) was diluted at 1:200(4 °C,overnight). 2, Cy3 labeled Secondary antibody was diluted at 1:300(room temperature, 50min).3, Picture B: DAPI(blue) 10min. Picture A:Target. Picture B: DAPI. Picture C: merge of A+B

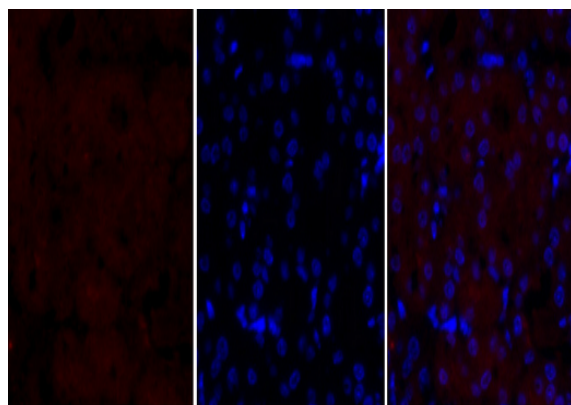


A

B

C

Immunofluorescence analysis of mouse-lung tissue. 1,MEK-1/2 Polyclonal Antibody(red) was diluted at 1:200(4 °C,overnight). 2, Cy3 labeled Secondary antibody was diluted at 1:300(room temperature, 50min).3, Picture B: DAPI(blue) 10min. Picture A:Target. Picture B: DAPI. Picture C: merge of A+B

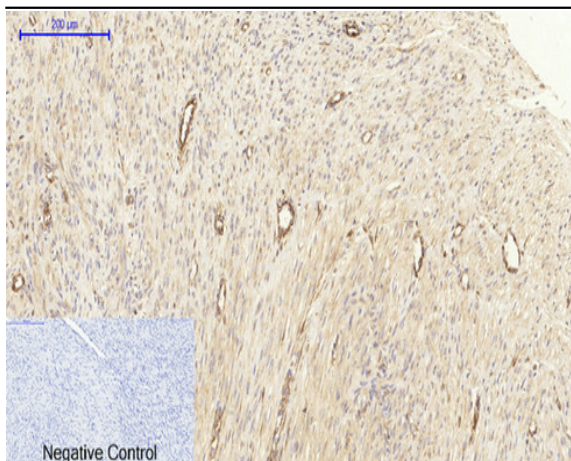


A

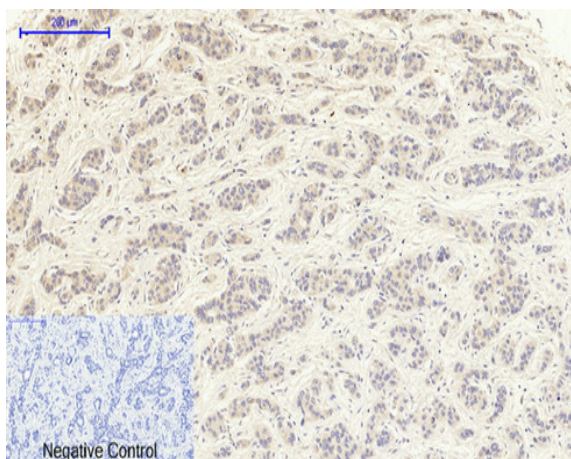
B

C

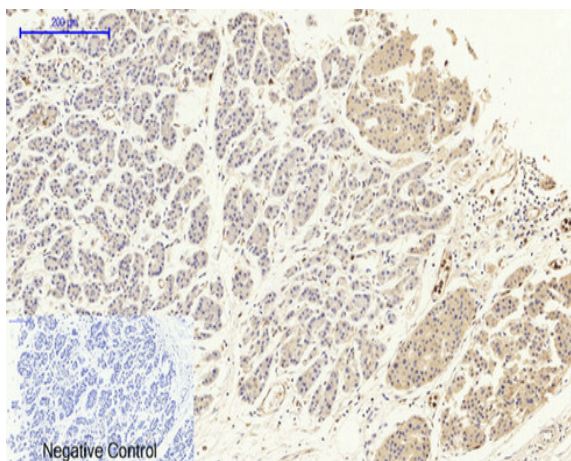
Immunofluorescence analysis of mouse-kidney tissue. 1,MEK-1/2 Polyclonal Antibody(red) was diluted at 1:200(4 °C,overnight). 2, Cy3 labeled Secondary antibody was diluted at 1:300(room temperature, 50min).3, Picture B: DAPI(blue) 10min. Picture A:Target. Picture B: DAPI. Picture C: merge of A+B



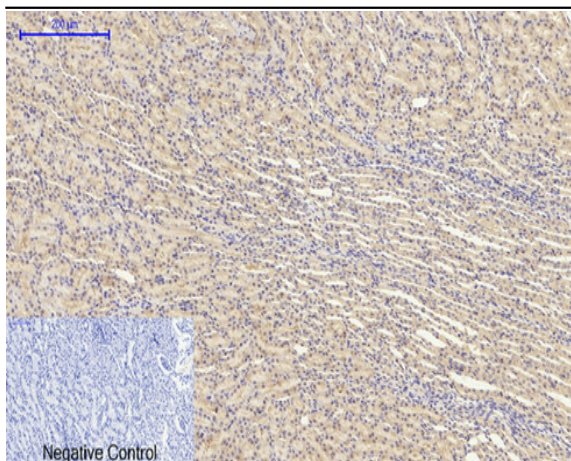
Immunohistochemical analysis of paraffin-embedded Human-uterus-cancer tissue. 1, MEK-1/2 Polyclonal Antibody was diluted at 1:200(4 °C, overnight). 2, Sodium citrate pH 6.0 was used for antibody retrieval(>98 °C, 20min). 3, Secondary antibody was diluted at 1:200(room temperature, 30min). Negative control was used by secondary antibody only.



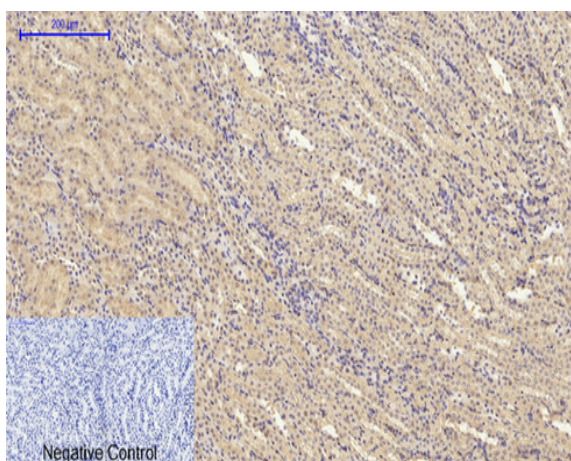
Immunohistochemical analysis of paraffin-embedded Human-liver-cancer tissue. 1, MEK-1/2 Polyclonal Antibody was diluted at 1:200(4 °C, overnight). 2, Sodium citrate pH 6.0 was used for antibody retrieval(>98 °C, 20min). 3, Secondary antibody was diluted at 1:200(room temperature, 30min). Negative control was used by secondary antibody only.



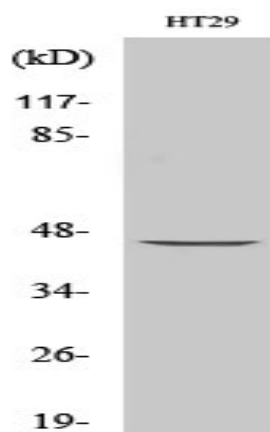
Immunohistochemical analysis of paraffin-embedded Human-stomach-cancer tissue. 1, MEK-1/2 Polyclonal Antibody was diluted at 1:200(4 °C, overnight). 2, Sodium citrate pH 6.0 was used for antibody retrieval(>98 °C, 20min). 3, Secondary antibody was diluted at 1:200(room temperature, 30min). Negative control was used by secondary antibody only.



Immunohistochemical analysis of paraffin-embedded Rat-kidney tissue. 1, MEK-1/2 Polyclonal Antibody was diluted at 1:200 (4°C, overnight). 2, Sodium citrate pH 6.0 was used for antibody retrieval (>98°C, 20min). 3, Secondary antibody was diluted at 1:200 (room temperature, 30min). Negative control was used by secondary antibody only.



Immunohistochemical analysis of paraffin-embedded Mouse-kidney tissue. 1, MEK-1/2 Polyclonal Antibody was diluted at 1:200 (4°C, overnight). 2, Sodium citrate pH 6.0 was used for antibody retrieval (>98°C, 20min). 3, Secondary antibody was diluted at 1:200 (room temperature, 30min). Negative control was used by secondary antibody only.



Western Blot analysis of various cells using MEK-1/2 Polyclonal Antibody diluted at 1:1000

