

## KIF13B Polyclonal Antibody

<b>Catalog No :</b>	YT2469
<b>Reactivity :</b>	Human
<b>Applications :</b>	WB;IHC;IF;ELISA
<b>Target :</b>	KIF13B
<b>Gene Name :</b>	KIF13B
<b>Protein Name :</b>	Kinesin-like protein KIF13B
<b>Human Gene Id :</b>	23303
<b>Human Swiss Prot No :</b>	Q9NQT8
<b>Immunogen :</b>	The antiserum was produced against synthesized peptide derived from human KIF13B. AA range:111-160
<b>Specificity :</b>	KIF13B Polyclonal Antibody detects endogenous levels of KIF13B protein.
<b>Formulation :</b>	Liquid in PBS containing 50% glycerol, 0.5% BSA and 0.02% sodium azide.
<b>Source :</b>	Polyclonal, Rabbit,IgG
<b>Dilution :</b>	WB 1:500 - 1:2000. IHC 1:100 - 1:300. ELISA: 1:5000.. IF 1:50-200
<b>Purification :</b>	The antibody was affinity-purified from rabbit antiserum by affinity-chromatography using epitope-specific immunogen.
<b>Concentration :</b>	1 mg/ml
<b>Storage Stability :</b>	-15°C to -25°C/1 year(Do not lower than -25°C)
<b>Observed Band :</b>	202kD
<b>Background :</b>	function:May be involved in reorganization of the cortical cytoskeleton. May be functionally important for the intracellular trafficking of MAGUKs and associated

protein complexes.,PTM:Phosphorylated upon DNA damage, probably by ATM or ATR.,similarity:Belongs to the kinesin-like protein family.,similarity:Contains 1 CAP-Gly domain.,similarity:Contains 1 FHA domain.,similarity:Contains 1 kinesin-motor domain.,subunit:Binds to DLG1 and DLG4.,tissue specificity:Ubiquitous.,

---

**Function :**

function:May be involved in reorganization of the cortical cytoskeleton. May be functionally important for the intracellular trafficking of MAGUKs and associated protein complexes.,PTM:Phosphorylated upon DNA damage, probably by ATM or ATR.,similarity:Belongs to the kinesin-like protein family.,similarity:Contains 1 CAP-Gly domain.,similarity:Contains 1 FHA domain.,similarity:Contains 1 kinesin-motor domain.,subunit:Binds to DLG1 and DLG4.,tissue specificity:Ubiquitous.,

---

**Subcellular Location :**

Cytoplasm, cytoskeleton . Cell projection, axon . accumulates at the distal part of the microtubules in the tips of axons, but not of dendrites.

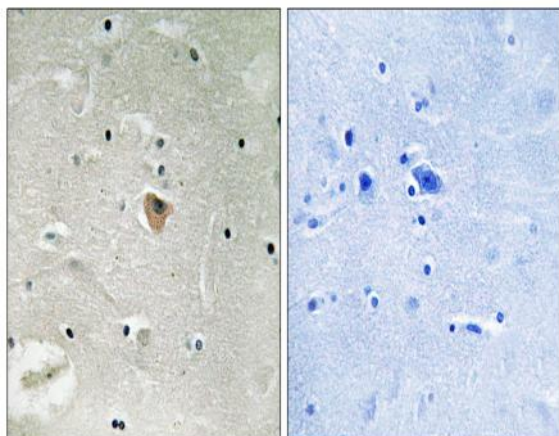
---

**Expression :**

Ubiquitous.

---

## Products Images



Immunohistochemistry analysis of paraffin-embedded human brain, using KIF13B Antibody. The picture on the right is blocked with the synthesized peptide.