

KKIALRE Polyclonal Antibody

| | |
|------------------------------|---|
| Catalog No : | YT2481 |
| Reactivity : | Human;Rat |
| Applications : | WB;IHC;IF;ELISA |
| Target : | KKIALRE |
| Gene Name : | CDKL1 |
| Protein Name : | Cyclin-dependent kinase-like 1 |
| Human Gene Id : | 8814 |
| Human Swiss Prot No : | Q00532 |
| Mouse Swiss Prot No : | Q8CEQ0 |
| Rat Gene Id : | 314198 |
| Rat Swiss Prot No : | Q66HE7 |
| Immunogen : | The antiserum was produced against synthesized peptide derived from human CDKL1. AA range:281-330 |
| Specificity : | KKIALRE Polyclonal Antibody detects endogenous levels of KKIALRE protein. |
| Formulation : | Liquid in PBS containing 50% glycerol, 0.5% BSA and 0.02% sodium azide. |
| Source : | Polyclonal, Rabbit,IgG |
| Dilution : | WB 1:500 - 1:2000. IHC 1:100 - 1:300. ELISA: 1:10000.. IF 1:50-200 |
| Purification : | The antibody was affinity-purified from rabbit antiserum by affinity-chromatography using epitope-specific immunogen. |
| Concentration : | 1 mg/ml |

Storage Stability : -15°C to -25°C/1 year(Do not lower than -25°C)

Observed Band : 42kD

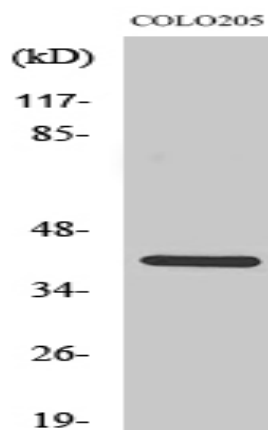
Background : This gene product is a member of a large family of CDC2-related serine/threonine protein kinases. It accumulates primarily in the nucleus. Two transcript variants encoding different isoforms have been found for this gene. [provided by RefSeq, Aug 2013],

Function : catalytic activity:ATP + a protein = ADP + a phosphoprotein.,domain:The [NKR]KIAxRE motif seems to be a cyclin-binding region.,similarity:Belongs to the protein kinase superfamily.,similarity:Belongs to the protein kinase superfamily. CMGC Ser/Thr protein kinase family. CDC2/CDKX subfamily.,similarity:Contains 1 protein kinase domain.,tissue specificity:Highly expressed in kidney, and to a lower extent in ovary.,

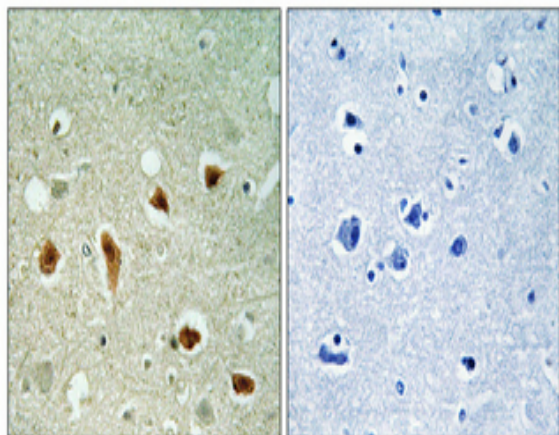
Subcellular Location : Cytoplasm . Nucleus .

Expression : Highly expressed in kidney, and to a lower extent in ovary.

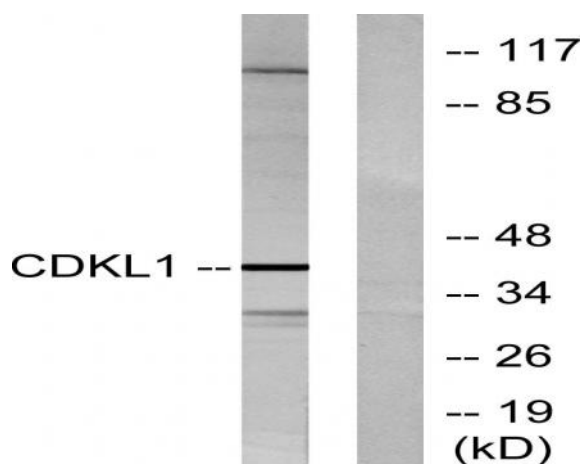
Products Images



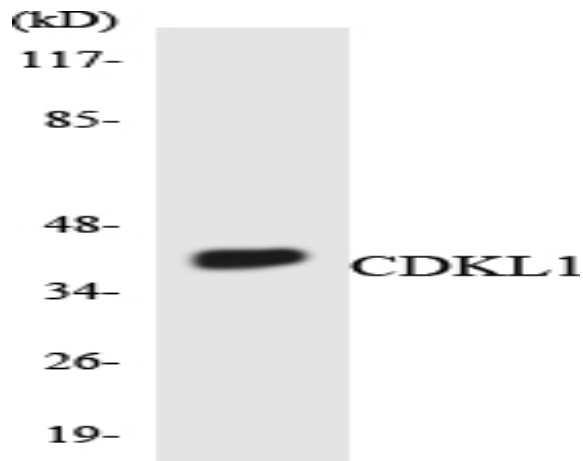
Western Blot analysis of various cells using KKIALRE Polyclonal Antibody diluted at 1:500



Immunohistochemical analysis of paraffin-embedded Human brain. Antibody was diluted at 1:100(4° overnight). High-pressure and temperature Tris-EDTA,pH8.0 was used for antigen retrieval. Negative control (right) obtained from antibody was pre-absorbed by immunogen peptide.



Western blot analysis of lysates from COLO205 cells, using CDKL1 Antibody. The lane on the right is blocked with the synthesized peptide.



Western blot analysis of the lysates from COLO205 cells using CDKL1 antibody.