

MLKL Polyclonal Antibody

Catalog No :	YT2788
Reactivity :	Human
Applications :	WB;IHC
Target :	MLKL
Fields :	>>Necroptosis;>>TNF signaling pathway;>>Salmonella infection
Gene Name :	MLKL
Protein Name :	Mixed lineage kinase domain-like protein
Human Gene Id :	197259
Human Swiss Prot No :	Q8NB16
Mouse Swiss Prot No :	Q9D2Y4
Immunogen :	Synthesized peptide derived from MLKL . at AA range: 40-120
Specificity :	MLKL Polyclonal Antibody detects endogenous levels of MLKL protein.
Formulation :	Liquid in PBS containing 50% glycerol, 0.5% BSA and 0.02% sodium azide.
Source :	Polyclonal, Rabbit,IgG
Dilution :	WB 1:500-2000;IHC 1:50-300
Purification :	The antibody was affinity-purified from rabbit antiserum by affinity-chromatography using epitope-specific immunogen.
Concentration :	1 mg/ml
Storage Stability :	-15°C to -25°C/1 year(Do not lower than -25°C)

Observed Band : 55kD

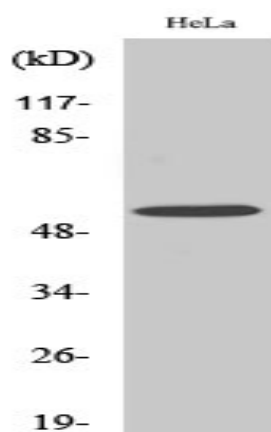
Background : This gene belongs to the protein kinase superfamily. The encoded protein contains a protein kinase-like domain; however, is thought to be inactive because it lacks several residues required for activity. This protein plays a critical role in tumor necrosis factor (TNF)-induced necroptosis, a programmed cell death process, via interaction with receptor-interacting protein 3 (RIP3), which is a key signaling molecule in necroptosis pathway. Inhibitor studies and knockdown of this gene inhibited TNF-induced necrosis. High levels of this protein and RIP3 are associated with inflammatory bowel disease in children. Alternatively spliced transcript variants have been described for this gene. [provided by RefSeq, Sep 2015],

Function : domain:The protein kinase domain is predicted to be catalytically inactive.,similarity:Belongs to the protein kinase superfamily.,similarity:Contains 1 protein kinase domain.,

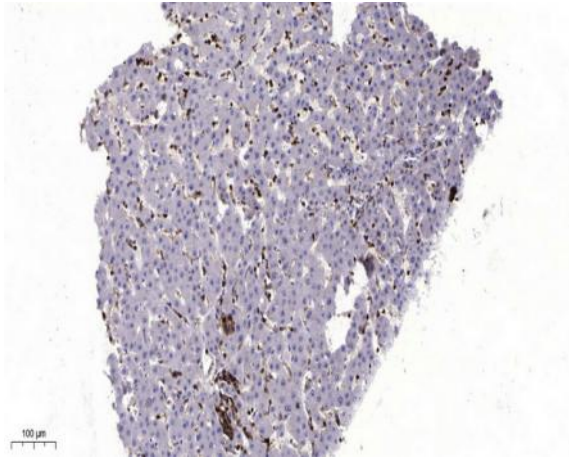
Subcellular Location : Cytoplasm . Cell membrane . Nucleus . Localizes to the cytoplasm and translocates to the plasma membrane on necroptosis induction (PubMed:24316671). Localizes to the nucleus in response to orthomyxoviruses infection (By similarity). .

Expression : Chondrocyte,Leukocyte,Lymph node,

Products Images



Western Blot analysis of various cells using MLKL Polyclonal Antibody diluted at 1:500



Immunohistochemical analysis of paraffin-embedded human liver cancer. 1, Antibody was diluted at 1:200(4° overnight). 2, Tris-EDTA,pH9.0 was used for antigen retrieval. 3,Secondary antibody was diluted at 1:200(room temperature, 45min).