

Latherin Polyclonal Antibody

Catalog No :	YT2540
Reactivity :	Human
Applications :	IHC;IF;ELISA
Target :	Latherin
Gene Name :	LATH
Protein Name :	Putative latherin
Human Gene Id :	607627
Human Swiss Prot No :	Q86YQ2
Immunogen :	The antiserum was produced against synthesized peptide derived from human LATH. AA range:71-120
Specificity :	Latherin Polyclonal Antibody detects endogenous levels of Latherin protein.
Formulation :	Liquid in PBS containing 50% glycerol, 0.5% BSA and 0.02% sodium azide.
Source :	Polyclonal, Rabbit,IgG
Dilution :	IHC 1:100 - 1:300. IF 1:200 - 1:1000. ELISA: 1:20000. Not yet tested in other applications.
Purification :	The antibody was affinity-purified from rabbit antiserum by affinity-chromatography using epitope-specific immunogen.
Concentration :	1 mg/ml
Storage Stability :	-15°C to -25°C/1 year(Do not lower than -25°C)
Observed Band :	19kD
Background :	LATH, also named as BASE, belongs to the BPI/LBP/Plunc superfamily and

Plunc family. It is the major protein in sweat, has surfactant properties.

Subcellular

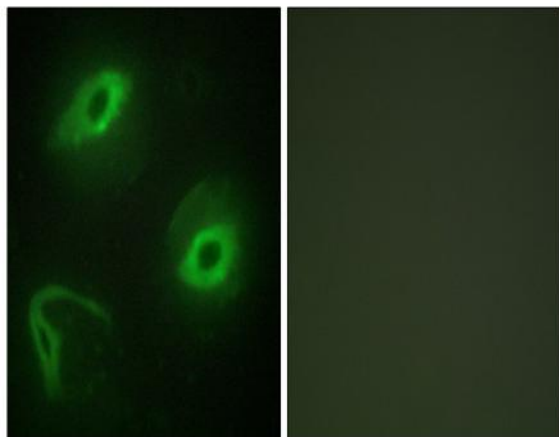
Secreted.

Location :

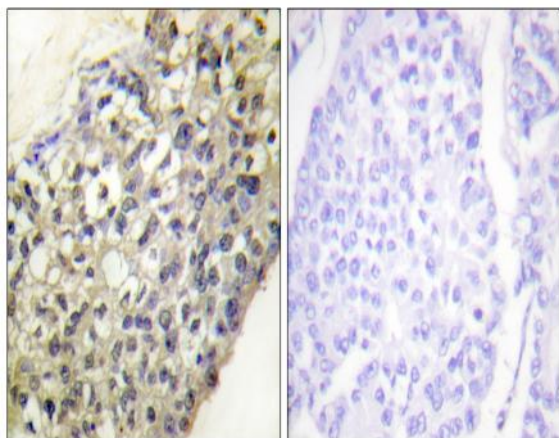
Expression :

Expressed in breast cancer and salivary gland.

Products Images



Immunofluorescence analysis of HeLa cells, using LATH Antibody. The picture on the right is blocked with the synthesized peptide.



Immunohistochemistry analysis of paraffin-embedded human breast carcinoma tissue, using LATH Antibody. The picture on the right is blocked with the synthesized peptide.