

Mnk1 Polyclonal Antibody

| | |
|------------------------------|---|
| Catalog No : | YT2805 |
| Reactivity : | Human;Mouse |
| Applications : | WB;IHC;IF;ELISA |
| Target : | Mnk1 |
| Fields : | >>MAPK signaling pathway;>>HIF-1 signaling pathway;>>Insulin signaling pathway |
| Gene Name : | MKNK1 |
| Protein Name : | MAP kinase-interacting serine/threonine-protein kinase 1 |
| Human Gene Id : | 8569 |
| Human Swiss Prot No : | Q9BUB5 |
| Mouse Gene Id : | 17346 |
| Mouse Swiss Prot No : | O08605 |
| Immunogen : | The antiserum was produced against synthesized peptide derived from human MKNK1. AA range:111-160 |
| Specificity : | Mnk1 Polyclonal Antibody detects endogenous levels of Mnk1 protein. |
| Formulation : | Liquid in PBS containing 50% glycerol, 0.5% BSA and 0.02% sodium azide. |
| Source : | Polyclonal, Rabbit,IgG |
| Dilution : | WB 1:500 - 1:2000. IHC 1:100 - 1:300. ELISA: 1:20000.. IF 1:50-200 |
| Purification : | The antibody was affinity-purified from rabbit antiserum by affinity-chromatography using epitope-specific immunogen. |
| Concentration : | 1 mg/ml |

Storage Stability : -15°C to -25°C/1 year(Do not lower than -25°C)

Observed Band : 51kD

Cell Pathway : MAPK_ERK_Growth;MAPK_G_Protein;Insulin_Receptor;

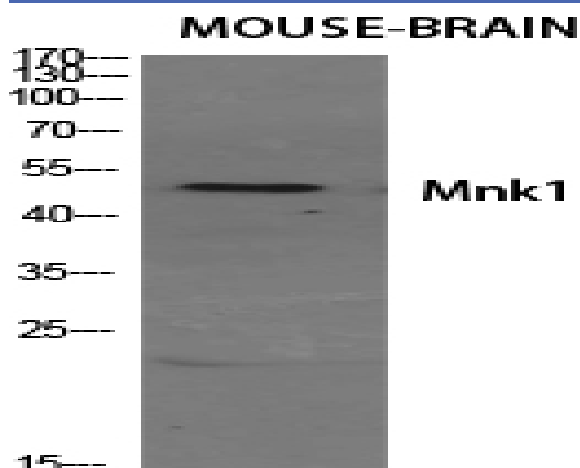
Background : MAP kinase interacting serine/threonine kinase 1(MKNK1) Homo sapiens This gene encodes a Ser/Thr protein kinase that interacts with, and is activated by ERK1 and p38 mitogen-activated protein kinases, and thus may play a role in the response to environmental stress and cytokines. This kinase may also regulate transcription by phosphorylating eIF4E via interaction with the C-terminal region of eIF4G. Alternatively spliced transcript variants have been noted for this gene. [provided by RefSeq, Jan 2012],

Function : catalytic activity:ATP + a protein = ADP + a phosphoprotein.,cofactor:Magnesium.,enzyme regulation:Phosphorylated and activated by the p38 kinases and kinases in the Erk pathway.,function:May play a role in the response to environmental stress and cytokines. Appears to regulate transcription by phosphorylating EIF4E, thus increasing the affinity of this protein for the 7-methylguanosine-containing mRNA cap.,PTM: Dual phosphorylation of Thr-250 and Thr-255 activates the kinase. Phosphorylation of Thr-385 activates the kinase.,similarity:Belongs to the protein kinase superfamily.,similarity:Belongs to the protein kinase superfamily. CAMK Ser/Thr protein kinase family.,similarity:Contains 1 protein kinase domain.,subunit:Interacts with the C-terminal regions of EIF4G1 and EIF4G2. Also binds to dephosphorylated ERK1 and ERK2, and to the p38 kinases.,tissue specificity:Ubiquitous.,

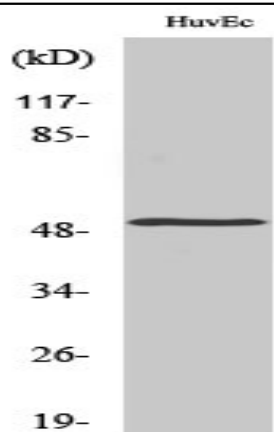
Subcellular Location : [Isoform 2]: Cytoplasm.; [Isoform 3]: Cytoplasm. Nucleus.

Expression : Ubiquitous.

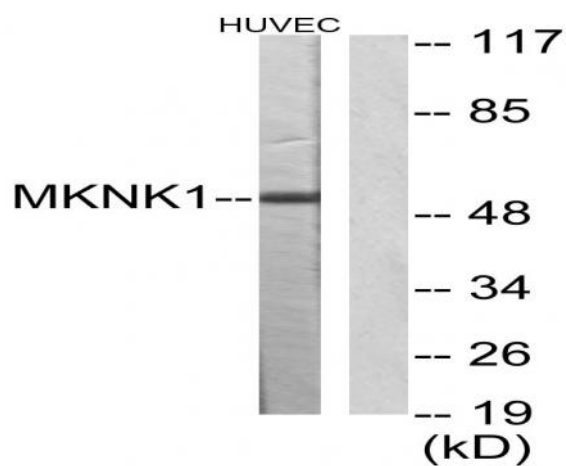
Products Images



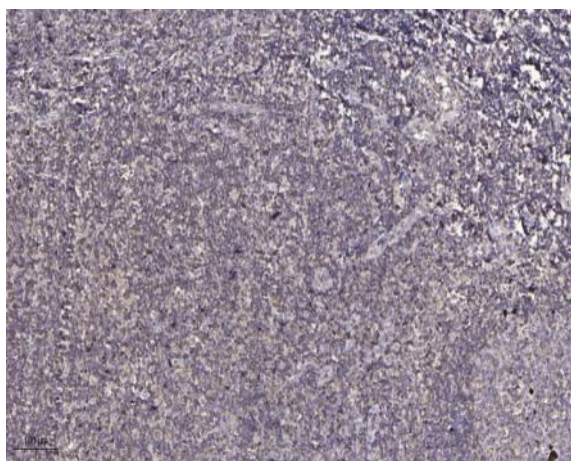
Western Blot analysis of various cells using Mnk1 Polyclonal Antibody diluted at 1:500



Western Blot analysis of HuvEc cells using Mnk1 Polyclonal Antibody diluted at 1:500



Western blot analysis of lysates from HUVEC cells, using MKNK1 Antibody. The lane on the right is blocked with the synthesized peptide.



Immunohistochemical analysis of paraffin-embedded human tonsil. 1, Antibody was diluted at 1:200(4° overnight). 2, Tris-EDTA,pH9.0 was used for antigen retrieval. 3,Secondary antibody was diluted at 1:200(room temperature, 30min).