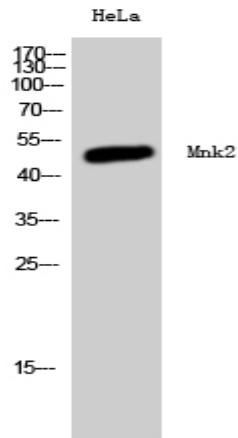


Mnk2 Polyclonal Antibody

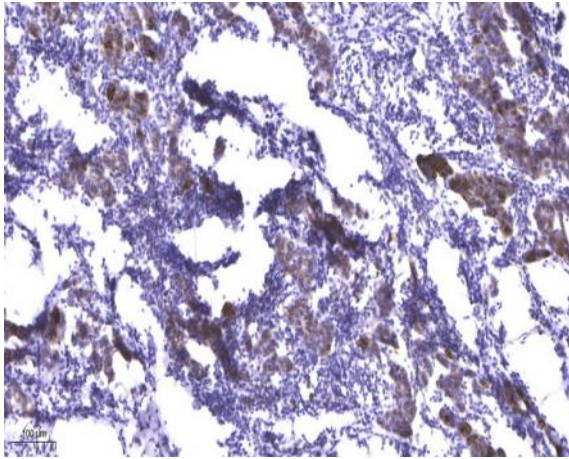
Catalog No :	YT2808
Reactivity :	Human;Mouse;Rat
Applications :	WB;ELISA;IHC
Target :	Mnk2
Fields :	>>MAPK signaling pathway;>>HIF-1 signaling pathway;>>Insulin signaling pathway
Gene Name :	MKNK2
Protein Name :	MAP kinase-interacting serine/threonine-protein kinase 2
Human Gene Id :	2872
Human Swiss Prot No :	Q9HBH9
Mouse Gene Id :	17347
Mouse Swiss Prot No :	Q8CDB0
Rat Gene Id :	299618
Rat Swiss Prot No :	Q5U2N4
Immunogen :	Synthesized peptide derived from the Internal region of human Mnk2.
Specificity :	Mnk2 Polyclonal Antibody detects endogenous levels of Mnk2 protein.
Formulation :	Liquid in PBS containing 50% glycerol, 0.5% BSA and 0.02% sodium azide.
Source :	Polyclonal, Rabbit,IgG
Dilution :	WB 1:500-2000;IHC 1:50-300; ELISA 2000-20000

Purification :	The antibody was affinity-purified from rabbit antiserum by affinity-chromatography using epitope-specific immunogen.
Concentration :	1 mg/ml
Storage Stability :	-15°C to -25°C/1 year(Do not lower than -25°C)
Observed Band :	51kD
Cell Pathway :	MAPK_ERK_Growth;MAPK_G_Protein;Insulin_Receptor;
Background :	MAP kinase interacting serine/threonine kinase 2(MKNK2) Homo sapiens This gene encodes a member of the calcium/calmodulin-dependent protein kinases (CAMK) Ser/Thr protein kinase family, which belongs to the protein kinase superfamily. This protein contains conserved DLG (asp-leu-gly) and ENIL (glu-asn-ile-leu) motifs, and an N-terminal polybasic region which binds importin A and the translation factor scaffold protein eukaryotic initiation factor 4G (eIF4G). This protein is one of the downstream kinases activated by mitogen-activated protein (MAP) kinases. It phosphorylates the eukaryotic initiation factor 4E (eIF4E), thus playing important roles in the initiation of mRNA translation, oncogenic transformation and malignant cell proliferation. In addition to eIF4E, this protein also interacts with von Hippel-Lindau tumor suppressor (VHL), ring-box 1 (Rbx1) and Cullin2 (Cul2), which are all components of the CBC(VHL) ubiquitin ligase E3 complex.
Function :	catalytic activity:ATP + a protein = ADP + a phosphoprotein.,cofactor:Binds 1 zinc ion per subunit.,cofactor:Magnesium.,function:May play a role in the response to environmental stress and cytokines. Appears to regulate transcription by phosphorylating EIF4E, thus increasing the affinity of this protein for the 7-methylguanosine-containing mRNA cap.,PTM: Dual phosphorylation of Thr-244 and Thr-249 activates the kinase. Phosphorylation of Thr-379 activates the kinase.,similarity:Belongs to the protein kinase superfamily. CAMK Ser/Thr protein kinase family.,similarity:Contains 1 protein kinase domain.,subunit:Monomer. Interacts with the C-terminal regions of EIF4G1 and EIF4G2. Also binds to dephosphorylated ERK1 and ERK2. Isoform 2 interacts with ESR2.,tissue specificity:Ubiquitously expressed in all tissues examined. Isoform 2 is expressed at higher levels in the ovary than is isoform 1.,
Subcellular Location :	[Isoform 2]: Nucleus, PML body.; [Isoform 1]: Cytoplasm.
Expression :	Ubiquitously expressed in all tissues examined. Isoform 2 is expressed at higher levels in the ovary than is isoform 1.

Products Images



Western Blot analysis of HeLa cells using Mnk2 Polyclonal Antibody



Immunohistochemical analysis of paraffin-embedded human Breast cancer. 1, Antibody was diluted at 1:200(4° overnight). 2, Tris-EDTA,pH9.0 was used for antigen retrieval. 3,Secondary antibody was diluted at 1:200(room temperature, 45min).