

mPR α Polyclonal Antibody

Catalog No :	YT2825
Reactivity :	Human;Rat;Mouse;
Applications :	WB;IHC
Target :	mPR α
Fields :	>>Chemical carcinogenesis - receptor activation
Gene Name :	PAQR7
Protein Name :	Membrane progestin receptor alpha
Human Gene Id :	164091
Human Swiss Prot No :	Q86WK9
Mouse Swiss Prot No :	Q80ZE4
Immunogen :	The antiserum was produced against synthesized peptide derived from human MPRA. AA range:297-346
Specificity :	mPR α Polyclonal Antibody detects endogenous levels of mPR α protein.
Formulation :	Liquid in PBS containing 50% glycerol, 0.5% BSA and 0.02% sodium azide.
Source :	Polyclonal, Rabbit,IgG
Dilution :	WB 1:500-2000;IHC 1:50-300
Purification :	The antibody was affinity-purified from rabbit antiserum by affinity-chromatography using epitope-specific immunogen.
Concentration :	1 mg/ml
Storage Stability :	-15°C to -25°C/1 year(Do not lower than -25°C)

Observed Band : 40kD

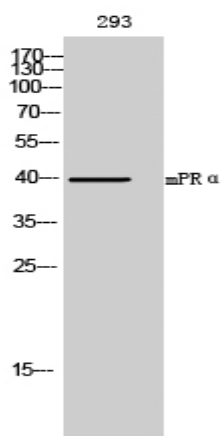
Background : function:Steroid membrane receptor. Binds progesterone in vitro. May be involved in oocyte maturation.,similarity:Belongs to the ADIPOR family.,tissue specificity:Expressed in ovary, testis, placenta, uterus and bladder.,

Function : function:Steroid membrane receptor. Binds progesterone in vitro. May be involved in oocyte maturation.,similarity:Belongs to the ADIPOR family.,tissue specificity:Expressed in ovary, testis, placenta, uterus and bladder.,

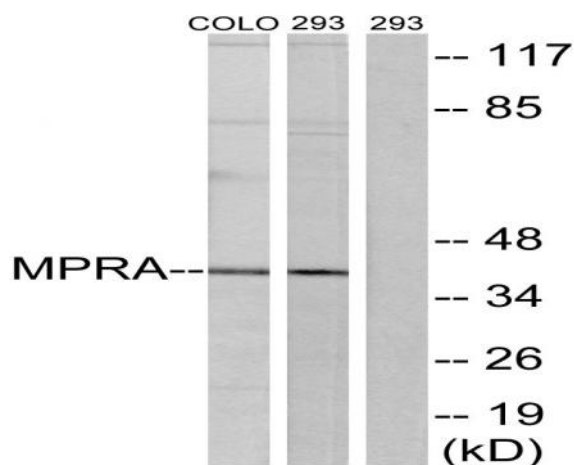
Subcellular Location : Cell membrane ; Multi-pass membrane protein .

Expression : Expressed in a wide range of tissues including ovary, testis, placenta, uterus and bladder.

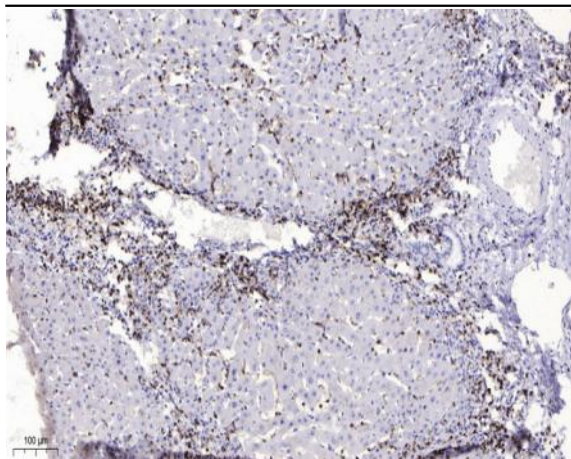
Products Images



Western Blot analysis of 293 cells using mPR α Polyclonal Antibody



Western blot analysis of lysates from 293 and COLO cells, using MPRA Antibody. The lane on the right is blocked with the synthesized peptide.



Immunohistochemical analysis of paraffin-embedded human liver cancer. 1, Antibody was diluted at 1:200(4° overnight). 2, Tris-EDTA,pH9.0 was used for antigen retrieval. 3,Secondary antibody was diluted at 1:200(room temperature, 45min).