

mPR γ Polyclonal Antibody

Catalog No :	YT2826
Reactivity :	Human;Mouse;Rat
Applications :	WB;ELISA;IHC
Target :	mPR γ
Fields :	>>Chemical carcinogenesis - receptor activation
Gene Name :	PAQR5
Protein Name :	Membrane progestin receptor gamma
Human Gene Id :	54852
Human Swiss Prot No :	Q9NXX6
Mouse Gene Id :	74090
Mouse Swiss Prot No :	Q9DCU0
Immunogen :	The antiserum was produced against synthesized peptide derived from human MPRG. AA range:281-330
Specificity :	mPR γ Polyclonal Antibody detects endogenous levels of mPR γ protein.
Formulation :	Liquid in PBS containing 50% glycerol, 0.5% BSA and 0.02% sodium azide.
Source :	Polyclonal, Rabbit,IgG
Dilution :	WB 1:500-2000;IHC 1:50-300; ELISA 2000-20000
Purification :	The antibody was affinity-purified from rabbit antiserum by affinity-chromatography using epitope-specific immunogen.
Concentration :	1 mg/ml

Storage Stability : -15°C to -25°C/1 year(Do not lower than -25°C)

Observed Band : 38kD

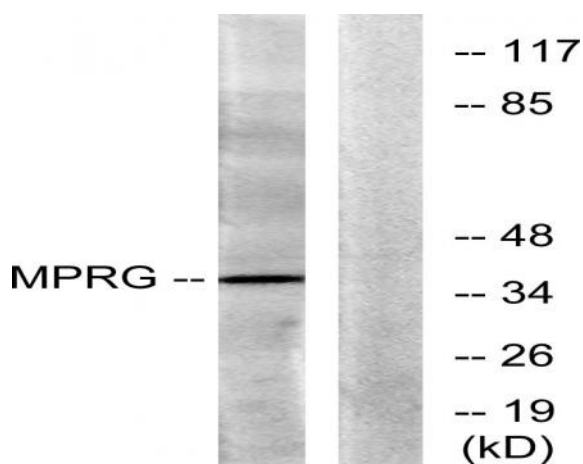
Background : function:Steroid membrane receptor. Binds progesterone. May be involved in oocyte maturation.,similarity:Belongs to the ADIPOR family.,tissue specificity:Expressed in the kidney, colon, adrenal and lung.,

Function : function:Steroid membrane receptor. Binds progesterone. May be involved in oocyte maturation.,similarity:Belongs to the ADIPOR family.,tissue specificity:Expressed in the kidney, colon, adrenal and lung.,

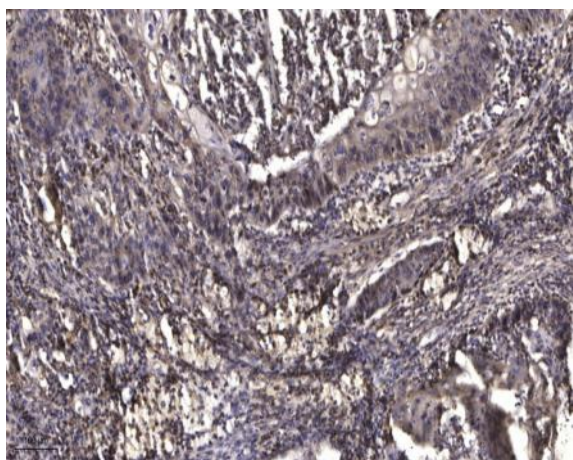
Subcellular Location : Cell membrane ; Multi-pass membrane protein .

Expression : Expressed in the brain, lung, kidney, colon, adrenal and lung.

Products Images



Western blot analysis of lysates from HUVEC cells, using MPRG Antibody. The lane on the right is blocked with the synthesized peptide.



Immunohistochemical analysis of paraffin-embedded human Squamous cell carcinoma of lung. 1, Antibody was diluted at 1:200(4° overnight). 2, Tris-EDTA,pH9.0 was used for antigen retrieval. 3,Secondary antibody was diluted at 1:200(room temperature, 45min).