

## Kif 7 Monoclonal Antibody(3F8)

<b>Catalog No :</b>	YM3063
<b>Reactivity :</b>	Human;Mouse;Rat
<b>Applications :</b>	IHC;IF
<b>Target :</b>	Kif 7
<b>Fields :</b>	>>Hedgehog signaling pathway;>>Pathways in cancer;>>Basal cell carcinoma
<b>Gene Name :</b>	KIF7
<b>Protein Name :</b>	Kinesin-like protein KIF7
<b>Human Gene Id :</b>	374654
<b>Human Swiss Prot No :</b>	Q2M1P5
<b>Mouse Gene Id :</b>	16576
<b>Mouse Swiss Prot No :</b>	B7ZNG0
<b>Immunogen :</b>	Synthetic Peptide of Kif 7
<b>Specificity :</b>	The antibody detects endogenous Kif 7 proteins.
<b>Formulation :</b>	PBS, pH 7.4, containing 0.5%BSA, 0.02% sodium azide as Preservative and 50% Glycerol.
<b>Source :</b>	Monoclonal, Mouse
<b>Dilution :</b>	IHC 1:50-200. IF 1:50-200
<b>Purification :</b>	The antibody was affinity-purified from mouse ascites by affinity-chromatography using specific immunogen.
<b>Storage Stability :</b>	-15°C to -25°C/1 year(Do not lower than -25°C)

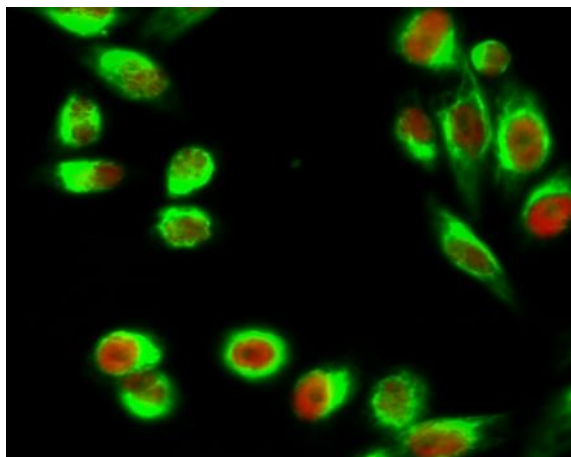
**Background :** This gene encodes a cilia-associated protein belonging to the kinesin family. This protein plays a role in the sonic hedgehog (SHH) signaling pathway through the regulation of GLI transcription factors. It functions as a negative regulator of the SHH pathway by preventing inappropriate activation of GLI2 in the absence of ligand, and as a positive regulator by preventing the processing of GLI3 into its repressor form. Mutations in this gene have been associated with various ciliopathies. [provided by RefSeq, Oct 2011],

**Function :** similarity:Belongs to the kinesin-like protein family. KIF27 subfamily.,similarity:Contains 1 kinesin-motor domain.,tissue specificity:Embryonic stem cells, melanotic melanoma and Jurkat T-cells.,

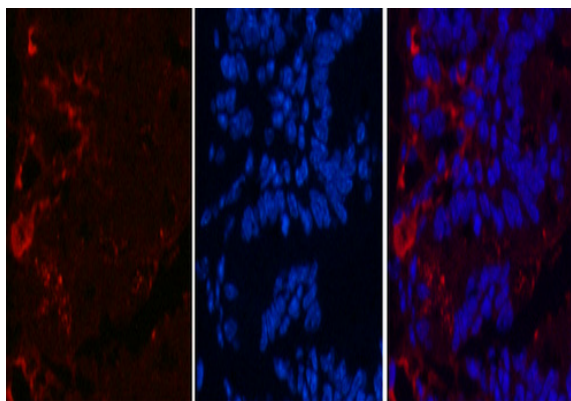
**Subcellular Location :** Cell projection, cilium . Cytoplasm, cytoskeleton, cilium basal body . Localizes to the cilium tip.

**Expression :** Embryonic stem cells, melanotic melanoma and Jurkat T-cells. Expressed in heart, lung, liver, kidney, testis, retina, placenta, pancreas, colon, small intestine, prostate and thymus.

## Products Images



Immunofluorescence analysis of HeLa cell. 1,C/EBP  $\beta$  Polyclonal Antibody(red) was diluted at 1:200(4° overnight). Kif 7 Monoclonal Antibody(3F8)(green) was diluted at 1:200(4° overnight). 2, Goat Anti Rabbit Alexa Fluor 594 Catalog:RS3611 was diluted at 1:1000(room temperature, 50min). Goat Anti Mouse Alexa Fluor 488 Catalog:RS3208 was diluted at 1:1000(room temperature, 50min).

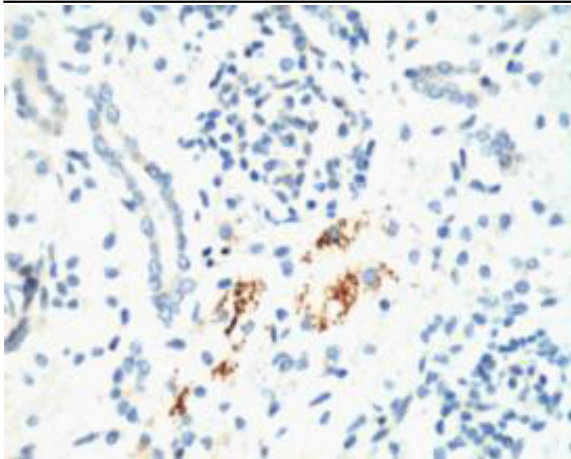


Immunofluorescence analysis of Mouse-colon tissue. 1,Kif 7 Monoclonal Antibody(3F8)(red) was diluted at 1:200(4°C,overnight). 2, Cy3 labeled Secondary antibody was diluted at 1:300(room temperature, 50min).3, Picture B: DAPI(blue) 10min. Picture A:Target. Picture B: DAPI. Picture C: merge of A+B

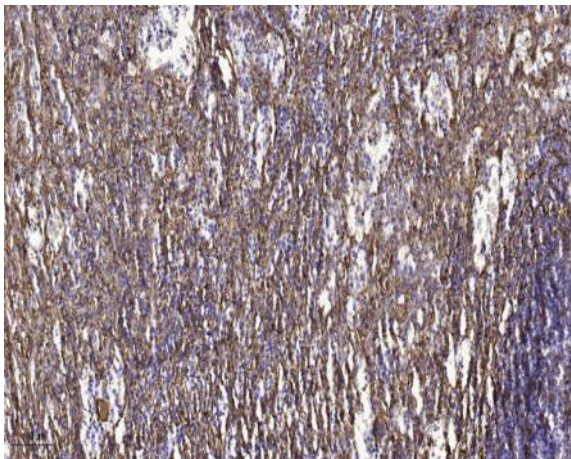
A

B

C



IHC staining of Mouse Kidney tissue, diluted at 1:200.



Immunohistochemical analysis of paraffin-embedded human spleen tissue. 1,primary Antibody was diluted at 1:200(4° overnight). 2, Sodium citrate pH 6.0 was used for antigen retrieval(>98 °C,20min). 3,Secondary antibody was diluted at 1:200